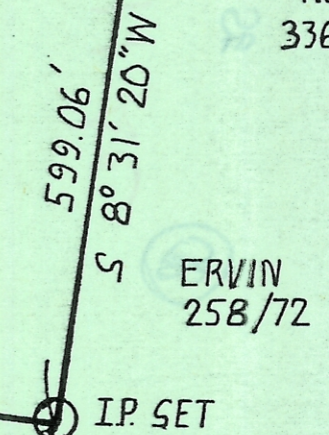
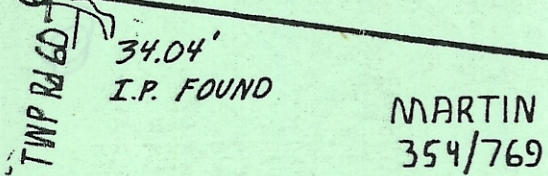
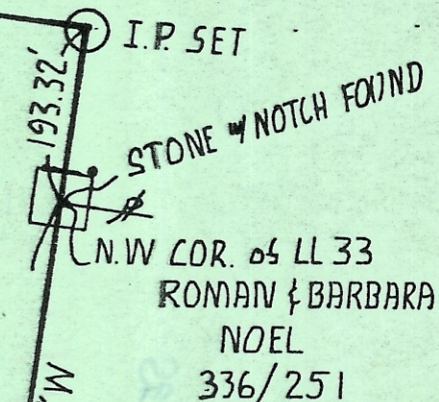


GEORGE H. FASHWORTH  
 367/696  
 S 81° 24' 13" E 1739.89'

31.111 ACRES



SCALE: 1" = 200'  
 IRON PINS SET  
 ARE 5/8 INCH  
 REBAR w/ PLASTIC  
 I.D. CAP

SURVEY OF A 31.111 ACRE TRACT  
 IN L.L. 35, SECTIONS 7 & 13,  
 T.9, R.14, ATHENS TOWNSHIP  
 ATHENS COUNTY, OHIO



SURVEYED MAY 1984  
*John M. Branner*  
 JOHN M. BRANNER  
 REGISTERED LAND SURVEYOR-6805  
 RT.3, ATHENS OHIO  
 592-5778

ATHENS TWP R14