

10) 7.62 (0.76)

60
35
280
158
18.00 @ 20

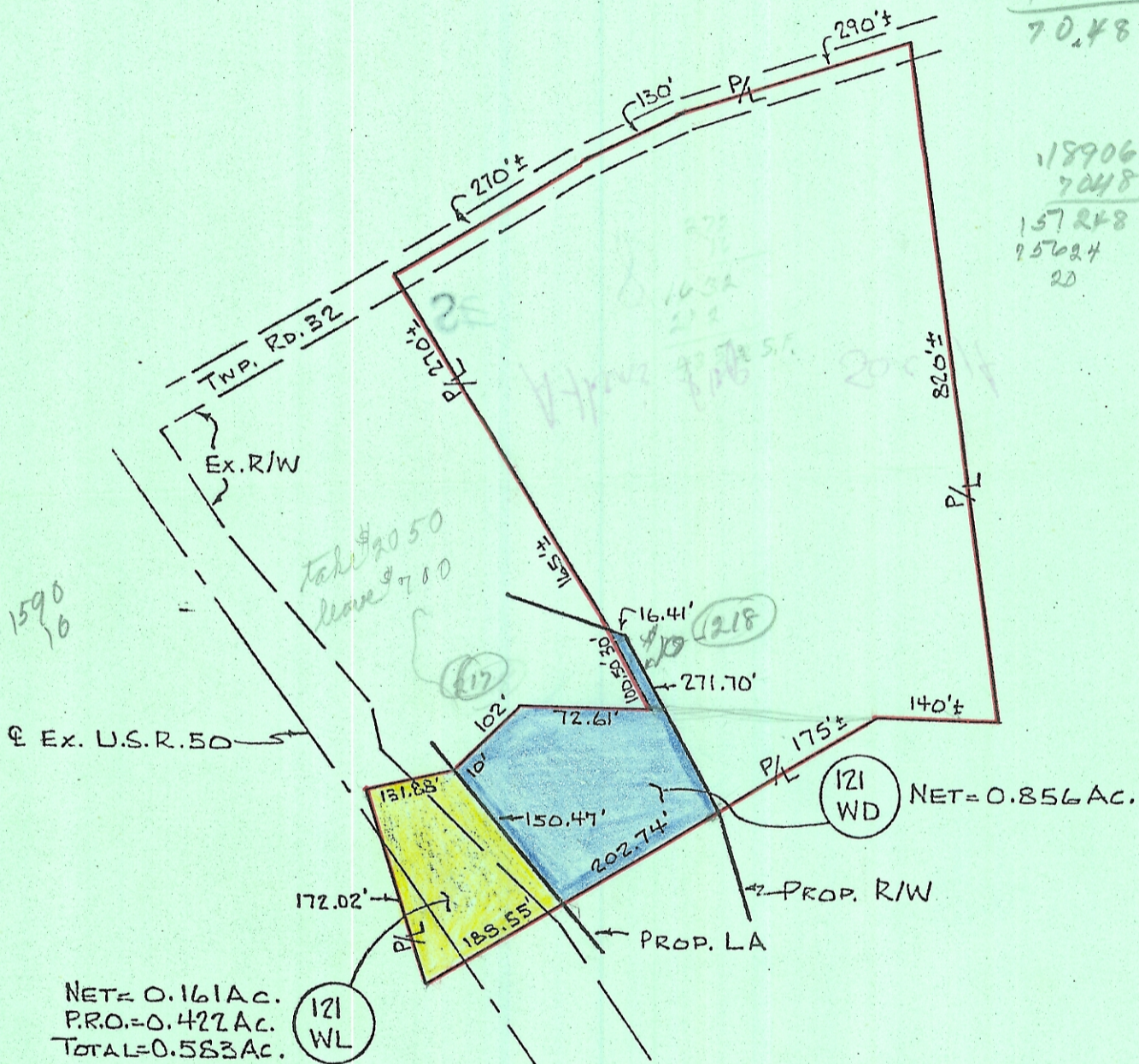
900
1850
2750 @ 16

3) 2750 @ 16
1590
1160



4530
1600
2518000
4530
7048000

18906
7048
157248
25624
20



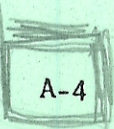
1590  
10

NET = 0.161 AC.  
P.R.O. = 0.422 AC.  
TOTAL = 0.583 AC.

121 WD NET = 0.856 AC.

GROSS DEED AREA = 9.680 AC.  
TOTAL P.R.O. = 1.160 AC.  
NET DEED AREA = 8.520 AC.  
NET RESIDUE LEFT = 7.503 AC.

7-51-09



*Charles E. ...*