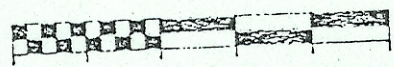


Sept. 18 1997

Approved by:

Charles C. Howe
Athens Cnty. Co. Auditor
Dept.

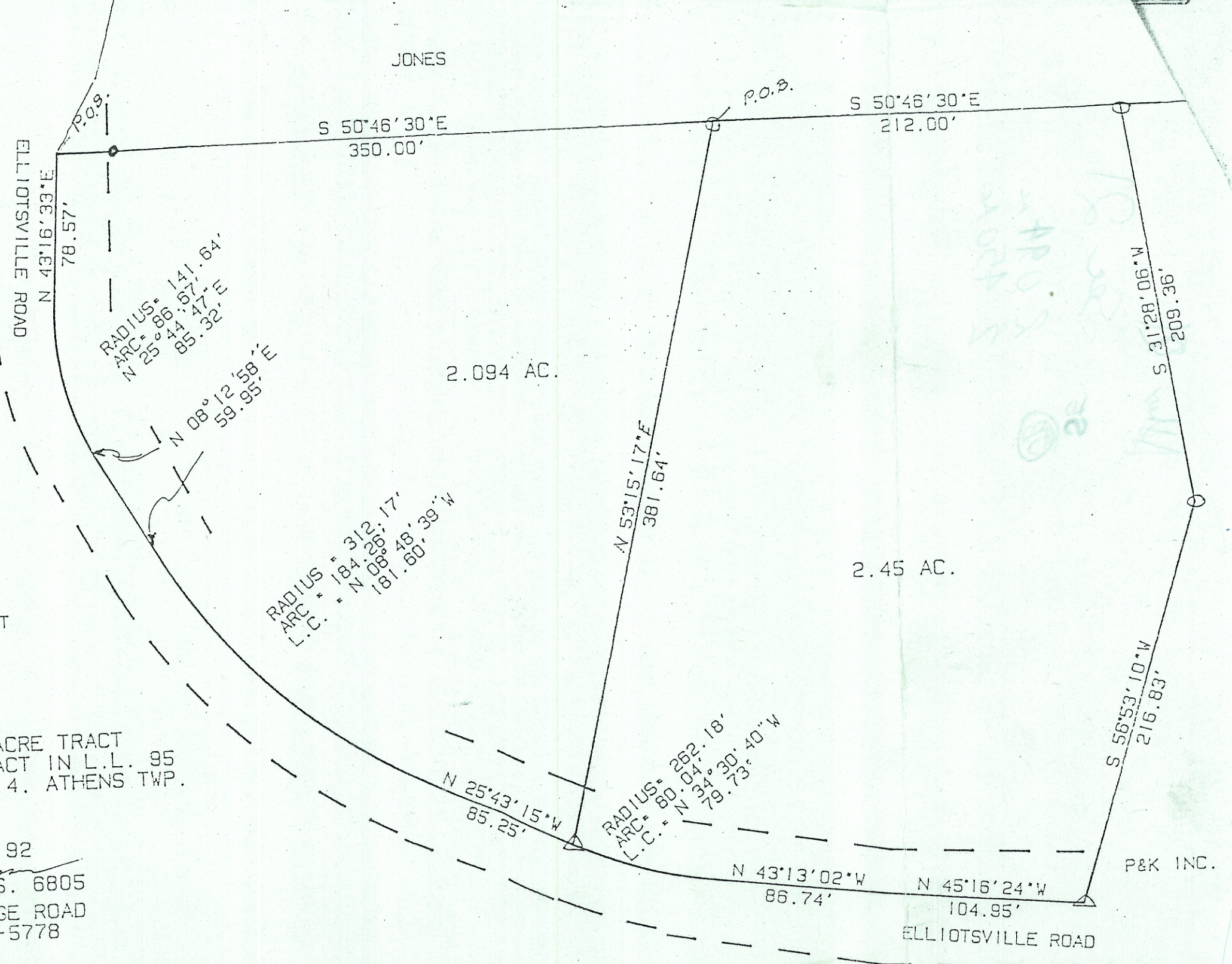


SCALE 1 INCH = 60 FEET
○ = IRON PIN SET
● = IRON PIN FOUND
△ = R.R.S.

SURVEY OF A 2.094 ACRE TRACT
AND A 2.45 ACRE TRACT IN L.L. 95
SECTION 21, T.9.R.14, ATHENS TWP.
ATHENS CO. OHIO

SURVEYED OCT. 92

John M. Branner
JOHN M. BRANNER P.S. 6805
12500 N. PEACH RIDGE ROAD
ATHENS, OHIO 592-5778



JONES

ELLIOTTSVILLE ROAD

S 50°46'30"E
350.00'

S 50°46'30"E
212.00'

P.O.B.

P.O.B.

RADIUS = 141.64'
ARC = 86.67'
N 25°14'47"E
85.32'

N 08°12'58"E
59.95'

2.094 AC.

RADIUS = 312.17'
ARC = 184.38'
N 08°48'39"W
181.60'

N 53°15'17"E
381.64'

2.45 AC.

N 25°43'15"W
85.25'

RADIUS = 262.18'
ARC = 80.04'
N 34°30'40"W
79.73'

N 43°13'02"W
86.74'

N 45°16'24"W
104.95'

ELLIOTTSVILLE ROAD

S 31°28'06"W
209.36'

S 56°53'10"W
216.83'

P&K INC.