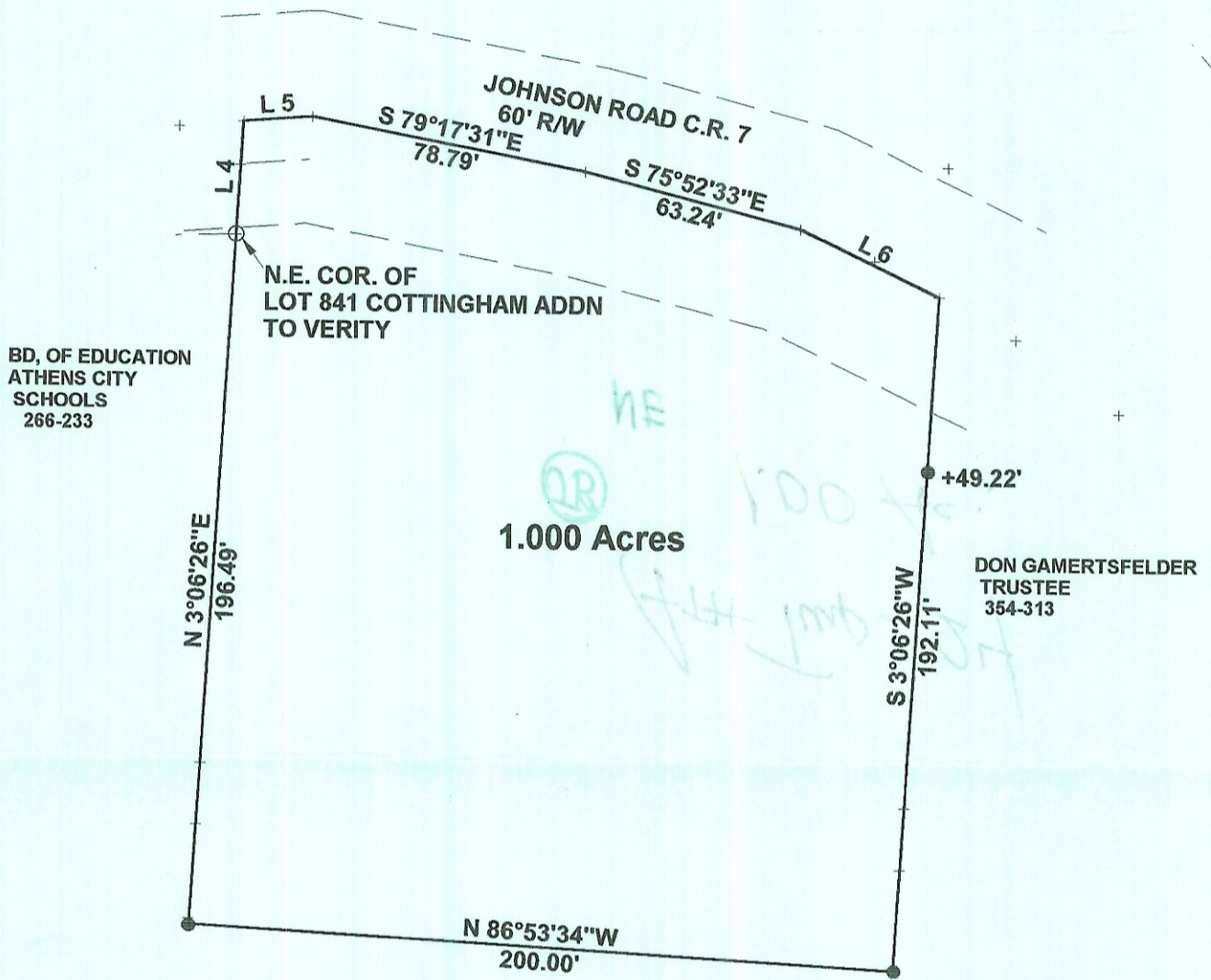


Line	Bearing	Distance
4	N 3°06'26"E	32.26'
5	N 85°32'38"E	19.46'
6	S 64°30'56"E	43.84'



BD, OF EDUCATION
ATHENS CITY
SCHOOLS
266-233

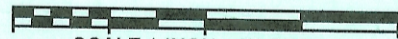
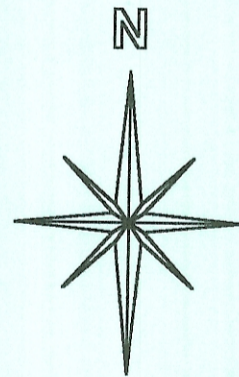
N.E. COR. OF
LOT 841 COTTINGHAM ADDN
TO VERITY

1.000 Acres

DON GAMERTSFELDER
TRUSTEE
354-313

**SURVEY OF 1.000 ACRE TRACT
IN L.L. 112, SECTION 24, T.9, R.14
ATHENS TOWNSHIP, ATHENS CO.,O
SURVEYED MARCH 2007**

John M. Branner
**JOHN M. BRANNER P.S. 6805
12500 N. PEACH RIDGE ROAD
ATHENS, OHIO 45701
740-592-5778**



SCALE 1 INCH = 50 FEET
● = IRON PIN SET
○ = IRON PIN FD.
ASSUMED BEARINGS
TO BE USED TO DENOTE
INTERIOR ANGLE ONLY

Description Checked for
Mathematical Accuracy
Athens County
ENGINEER'S OFFICE

BY: *K. Cantelero*
DATE: *3/18/07*

