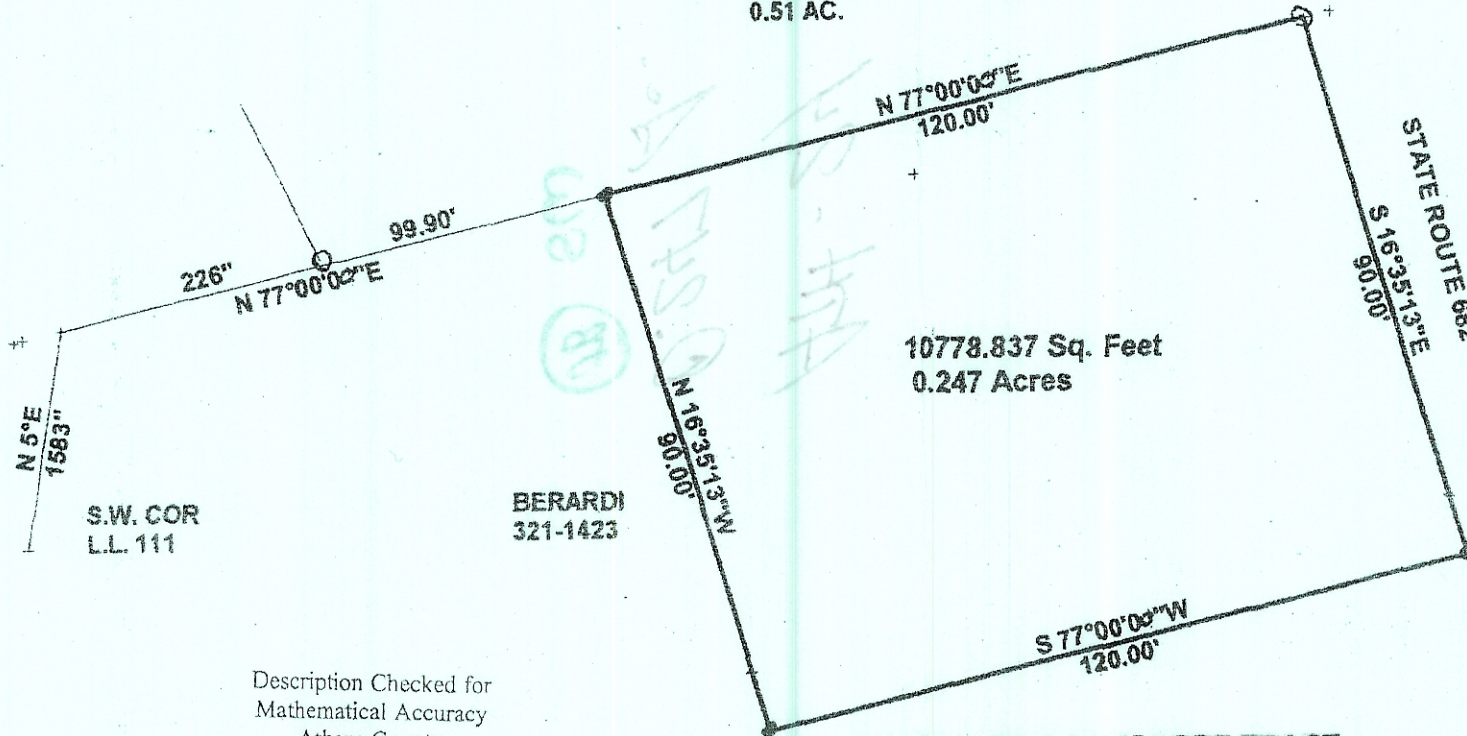


LOVE
97-443 O.R.
0.51 AC.

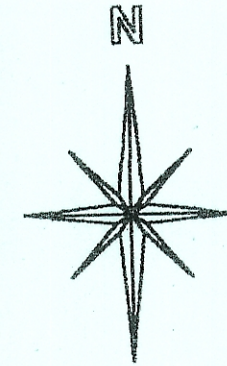


S.W. COR
LL 111

BERARDI
321-1423

10778.837 Sq. Feet
0.247 Acres

STATE ROUTE 682
S 16°35'13\"/>



SCALE 1 INCH = 100 FEET
 ● = IRON PIN SET
 ○ = IRON PIN FD.
 ASSUMED BEARINGS
 TO BE USED TO DENOTE
 INTERIOR ANGLE ONLY

Description Checked for
 Mathematical Accuracy
 Athens County
 ENGINEER'S OFFICE

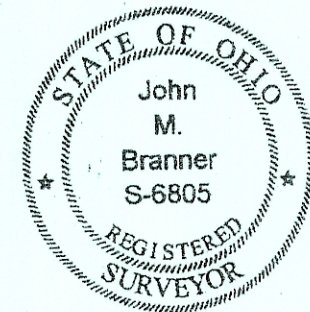
BY: [Signature]
 DATE: 9-22-08

Description Checked for
 Mathematical Accuracy
 Athens County
 ENGINEER'S OFFICE

BY: [Signature]
 DATE: 6-13-05

**SURVEY OF A 0.247 ACRE TRACT
 IN LL 111, SECTION 24, T.9, R.14,
 ATHENS TOWNSHIP
 ATHENS COUNTY, OHIO
 SURVEYED MAY 2004**

BY: [Signature]
**JOHN M. BRANNER P.S. 6805
 12500 N. PEACH RIDGE ROAD
 ATHENS, OHIO 45701
 (740) 592-5778**



Instrument 200500004638
 Book Page 384 1375