

Description Approved
Jill A. Thompson 1-18-13
Athens County Auditor

EXHIBIT "A"

DESCRIPTION OF A 25.00 ACRE TRACT

Situated in L.L. 118 and L.L. 120 of Sections 25 and 26 of T.9, R.14, Athens Township, Athens County, Ohio and being a part of Latta Earthworks L.L.C. (479-712 O.R.) and being more particularly described as follows:

Beginning at an iron pin at the North-east corner of L.L. 154;
Thence, along the north-line of Flournoy Trustees(179-970 O.R.),
N 85° 40' 58" W, 593.63 feet to an iron pin set;
Thence, along a new line created by this survey:
N 3° 29' 28" E, 813.00 feet to an iron pin set;
S 87° 42' 50" E, 1028.89 feet to an iron pin set;
S 4° 14' 13" W, 776.33 feet to an iron pin set;
N 88° 02' 15" W, 161.13 feet to an iron pin set;
S 10° 40' 17" E, 436.64 feet to an iron pin set;
S 29° 25' 42" E, 392.25 to an iron pin set at the North-west corner of the Schwarzel (363-1932 O.R.);
Thence, along the west-lines of said tract:
S 31° 01' 22" E, 89.54 feet to an iron pin set;
S 57° 40' 38" E, 35.89 feet to an iron pin set;
S 32° 08' 27" W, 33.51 feet to a point in Baker Road;

Thence, along Baker Road:
S 89° 25' 58" W, 154.20 feet;
N 89° 01' 33" W, 131.24 feet;
N 82° 09' 43" W, 95.14 feet;
N 73° 15' 29" W, 72.58 feet;
Thence, leaving said road, and along the lines of Latta (263-1610 O.R.);
N 27° 03' 56" E, 323.42 feet to an iron pin found;
N 61° 43' 22" W, 365.84 feet to a point;
Thence, along the west-line of Flournoy Trustees (179-970 O.R.);
N 4° 00' 35" E, 353.54 feet to the point of beginning and containing 25.00 acres of which 3.740 acres are in L.L. 118 and 21.260 acres are in L.L. 120;

Subject to all easements and rights of way of record.

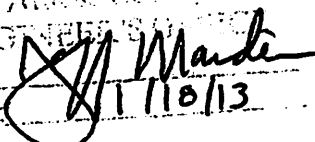
Iron pins set are 5/8" by 30" long rebar with plastic I.D. cap.

Bearings Grid North: N.A. D. 83

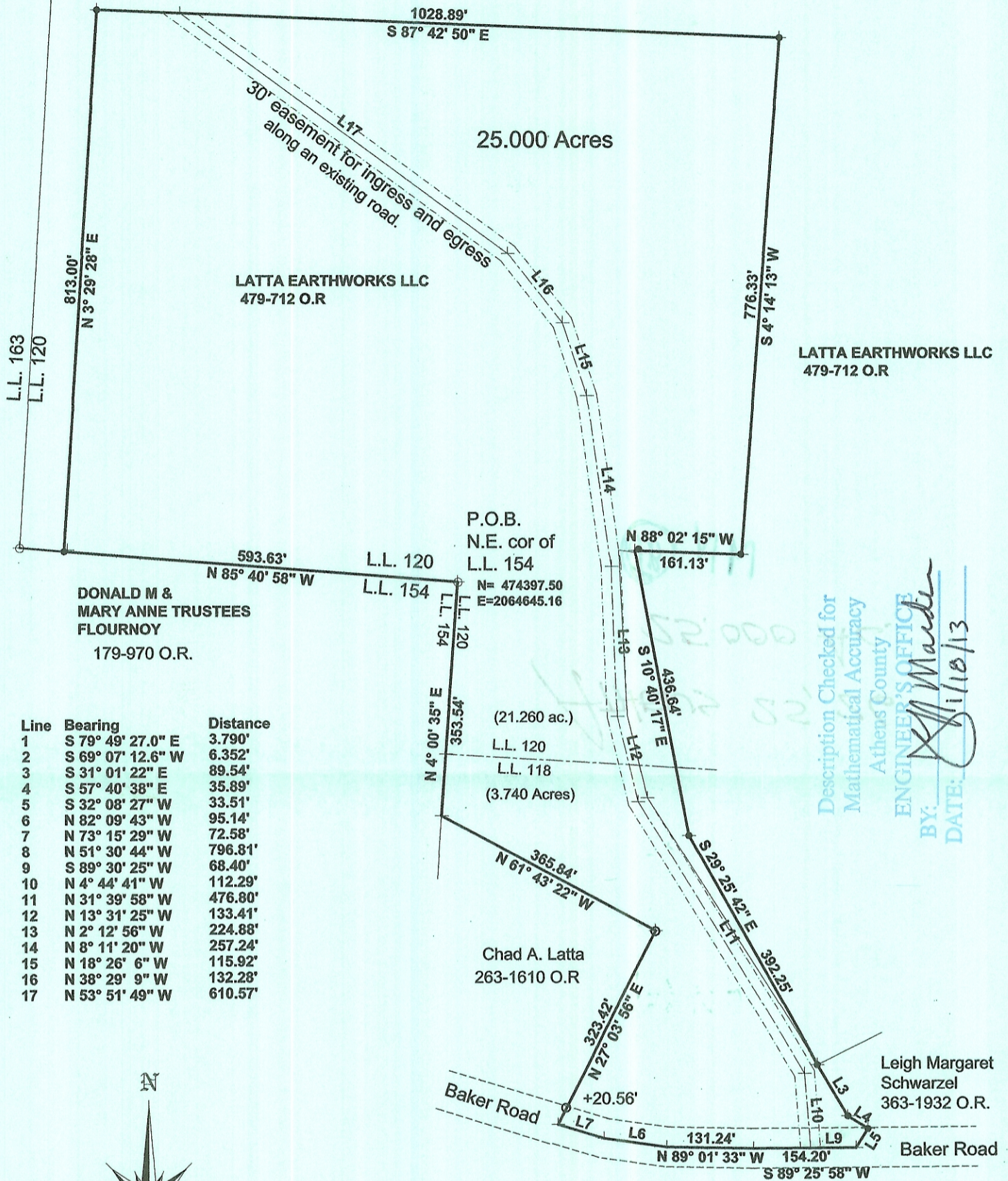
The above description is based on a field survey completed January 2013

by John M. Branner P.S. 6805



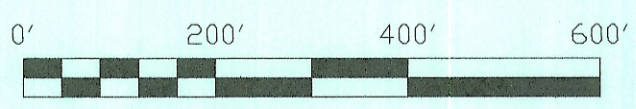
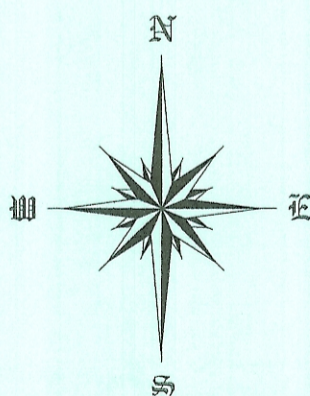
John M. Branner
Professional Surveyor
Athens County
ENGINEER'S OFFICE
BY: 
DATE: 1/18/13





Description Checked for
Mathematical Accuracy
Athens County
ENGINEER'S OFFICE
BY: *J. M. Branner*
DATE: 1/10/13

Line	Bearing	Distance
1	S 79° 49' 27.0" E	3.790'
2	S 69° 07' 12.6" W	6.352'
3	S 31° 01' 22" E	89.54'
4	S 57° 40' 38" E	35.89'
5	S 32° 08' 27" W	33.51'
6	N 82° 09' 43" W	95.14'
7	N 73° 15' 29" W	72.58'
8	N 51° 30' 44" W	796.81'
9	S 89° 30' 25" W	68.40'
10	N 4° 44' 41" W	112.29'
11	N 31° 39' 58" W	476.80'
12	N 13° 31' 25" W	133.41'
13	N 2° 12' 56" W	224.88'
14	N 8° 11' 20" W	257.24'
15	N 18° 26' 6" W	115.92'
16	N 38° 29' 9" W	132.28'
17	N 53° 51' 49" W	610.57'



Scale 1 inch = 200 feet
 ● = iron pin set 5/8"x30" long rebar
 ○ = iron pin found
 Bearings: Grid North N.A.D. 83
 Ref. Docs.: Tax Plat- Deeds

Survey of a 25.00 acre Tract
 in L.L. 118 & L.L. 120, Secns. 25 & 26
 T.9, R.14 Athens Township, Athens Co., O.
 Surveyed January 2013

John M. Branner
 John M. Branner P.S. 6805
 62 East First Street
 Athens, Ohio 45780
 740-541-0350

