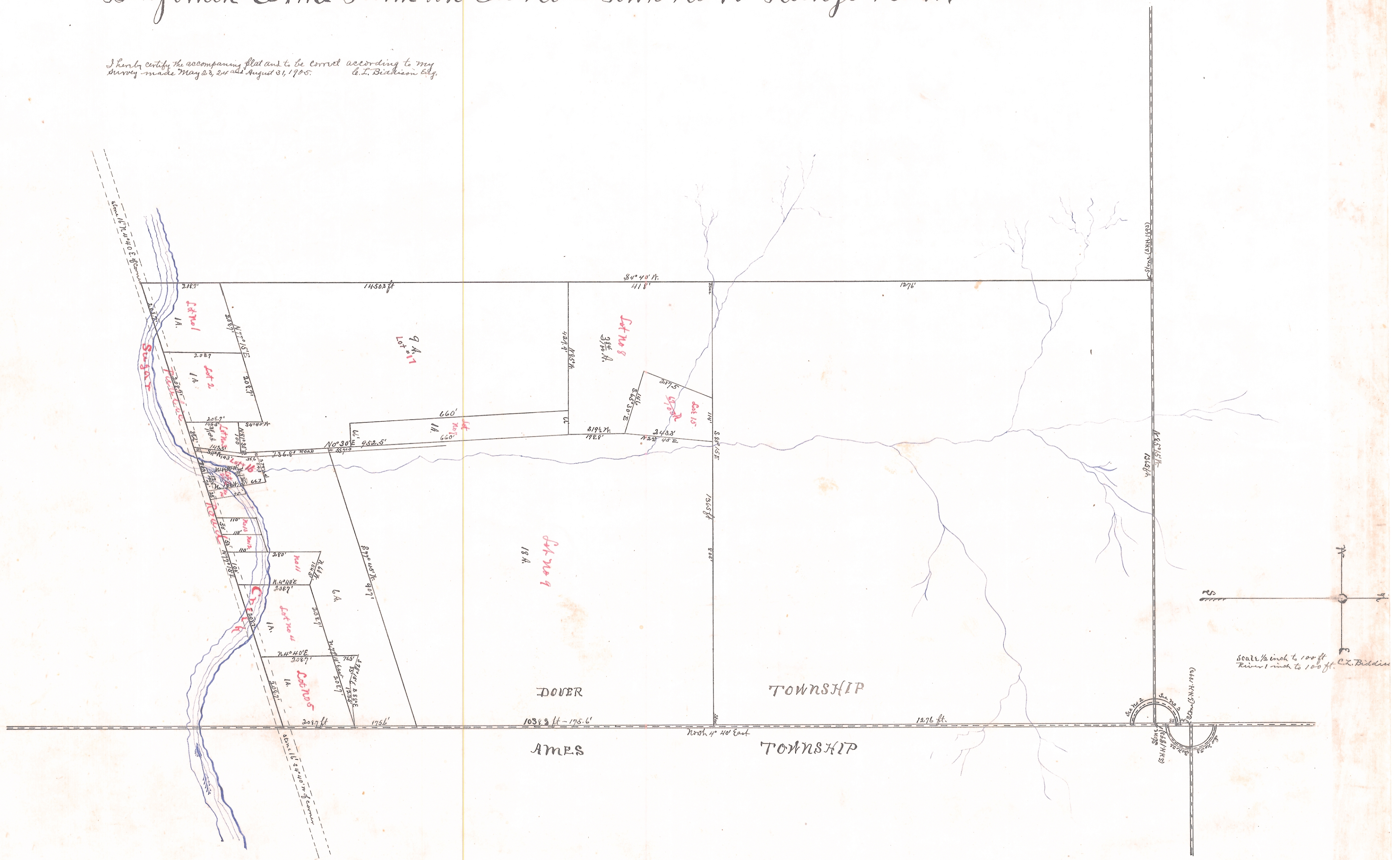


ENVELOPE: 224B

BENJAMIN ORME FARM MAP
SECTION 2
DOVER TWP

Map of Benjamin Orme Farm in Sec. No. 2 Town No 10 Range No 14

I hereby certify the accompanying plat and to be correct according to my
survey made May 23, 24 and August 31, 1905. *E. T. Bidleman City*



Transfer not necessary
E. R. Walker, Auditor
Recd for record on August 3, 1908
Recorded on Oct. 12, 1908
attest: B. S. Richards C^o Clerk