



SOUTHEASTERN LAND SURVEYS

LEONARD F. SWOYER
REGISTERED PROFESSIONAL LAND SURVEYOR

3428 Pleasant Hill Road
Athens, Ohio 45701
614/593-8701

Situated in Section 26, Town 7, Range 12, Bern Township, Athens County, Ohio and described as follows:

Commencing at a found stone* at the northwest corner of Section 26; thence on an assumed bearing along an arbitrary line South 69 degrees 17 minutes 08 seconds East, a distance of 2004.37 feet to a point in State Route 329, THE TRUE POINT OF BEGINNING; thence along said road the following fifteen bearings and distances: 1) South 75 degrees 42 minutes 50 seconds East, a distance of 71.53 feet to a point; thence 2) South 83 degrees 01 minute 04 seconds East, a distance of 100.20 feet to a point; thence 3) South 89 degrees 19 minutes 39 seconds East, a distance of 105.44 feet to a point; thence 4) North 87 degrees 17 minutes 22 seconds East, a distance of 481.73 feet to a point; thence 5) North 88 degrees 26 minutes 59 seconds East, a distance of 51.53 feet to a point; thence 6) South 89 degrees 38 minutes 00 seconds East, a distance of 70.36 feet to a point; thence 7) South 87 degrees 33 minutes 16 seconds East, a distance of 90.17 feet to a point; thence 8) South 85 degrees 42 minutes 20 seconds East, a distance of 95.78 feet to a point; thence 9) South 83 degrees 24 minutes 27 seconds East, a distance of 96.72 feet to a point; thence 10) South 81 degrees 13 minutes 08 seconds East, a distance of 101.74 feet to a point; thence 11) South 77 degrees 45 minutes 26 seconds East, a distance of 98.30 feet to a point; thence 12) South 76 degrees 11 minutes 15 seconds East, a distance of 98.57 feet to a point; thence 13) South 74 degrees 11 minutes 35 seconds East, a distance of 106.14 feet to a point; thence 14) South 71 degrees 50 minutes 57 seconds East, a distance of 104.13 feet to a point; thence 15) South 68 degrees 52 minutes 41 seconds East, a distance of 112.62 feet to a point at the grantor's northeast property corner; thence leaving said road and along the grantor's easterly property line the following six bearings and distances: 1) South 31 degrees 12 minutes 34 seconds West, passing a found iron pin at 78.97 feet, for a total distance of



PROPERTY

CONSTRUCTION

SUBDIVISIONS

64

BER # 26

1087.95 feet to a point; thence 2) South 36 degrees 01 minute 14 seconds West, a distance of 341.56 feet to a point; thence 3) North 89 degrees 09 minutes 30 seconds West, a distance of 57.92 feet to a point; thence 4) continuing North 89 degrees 09 minutes 30 seconds West along said line, a distance of 640.45 feet to a point; thence 5) continuing North 89 degrees 09 minutes 30 seconds West along said line, a distance of 218.10 feet to a point; thence 6) South 3 degrees 00 minutes 30 seconds West, passing a found iron pin at 915.82 feet, for a total distance of 943.42 feet to a found iron pin at the grantor's southeast property corner in Athens County Road 38; thence along said road and along the grantor's southerly property line the following two bearings and distances: 1) North 64 degrees 37 minutes 47 seconds West, a distance of 350.59 feet to a point; thence 2) North 68 degrees 50 minutes 25 seconds West, a distance of 329.60 feet to a found railroad spike at the grantor's southwest property corner; thence leaving said road and along the grantor's westerly property line North 0 degrees 00 minutes 00 seconds East, a distance of 568.20 feet to a fence corner post*; thence leaving the grantor's westerly property line South 88 degrees 05 minutes 31 seconds East, a distance of 129.42 feet to a set iron pin in a ravine; thence along said ravine the following 12 bearings and distances: 1) North 43 degrees 54 minutes 42 seconds East, a distance of 22.45 feet to a point; thence 2) North 42 degrees 55 minutes 43 seconds East, a distance of 91.97 feet to a point; thence 3) North 58 degrees 52 minutes 03 seconds East, a distance of 115.65 feet to a point; thence 4) North 41 degrees 46 minutes 30 seconds East, a distance of 79.60 feet to a point; thence 5) North 52 degrees 42 minutes 57 seconds East, a distance of 80.46 feet to a point; thence 6) North 16 degrees 22 minutes 54 seconds East, a distance of 148.16 feet to a point; thence 7) North 7 degrees 46 minutes 16 seconds East, a distance of 197.39 feet to a point; thence 8) North 3 degrees 03 minutes 06 seconds East, a distance of 134.60 feet to a point; thence 9) North 27 degrees 47 minutes 57 seconds East, a distance of 97.25 feet to a point; thence 10) North 2 degrees 47 minutes 29 seconds East, a distance of 126.73 feet to a point; thence 11) North 4 degrees 42 minutes 46 seconds East, a distance of 103.68 feet to a point; thence 12) North 10 degrees 15 minutes 39 seconds East, a distance of 153.34 feet to a point on the south side of Federal Creek; thence North 0 degrees 09 minutes 10 seconds East, a distance of 110.48 feet to a set iron pin on the north side of Federal Creek; thence North 3 degrees 04 minutes 17 seconds East, passing a set iron pin at 150.66 feet, for a total distance of 193.08 feet to the point of beginning and

65

containing 58.451 acres, and being a part of Tract Two of the tracts of land described in Volume 200 Page 777 of the Athens County Official Deed Records.

*denotes calculated location of monument based on previous survey.

Note: Unless otherwise noted, all set iron pins are 5/8 inch diameter rebar and 30 inches in length and capped with a plastic identification marker inscribed L.F. Swoyer R.L.S. 6765.

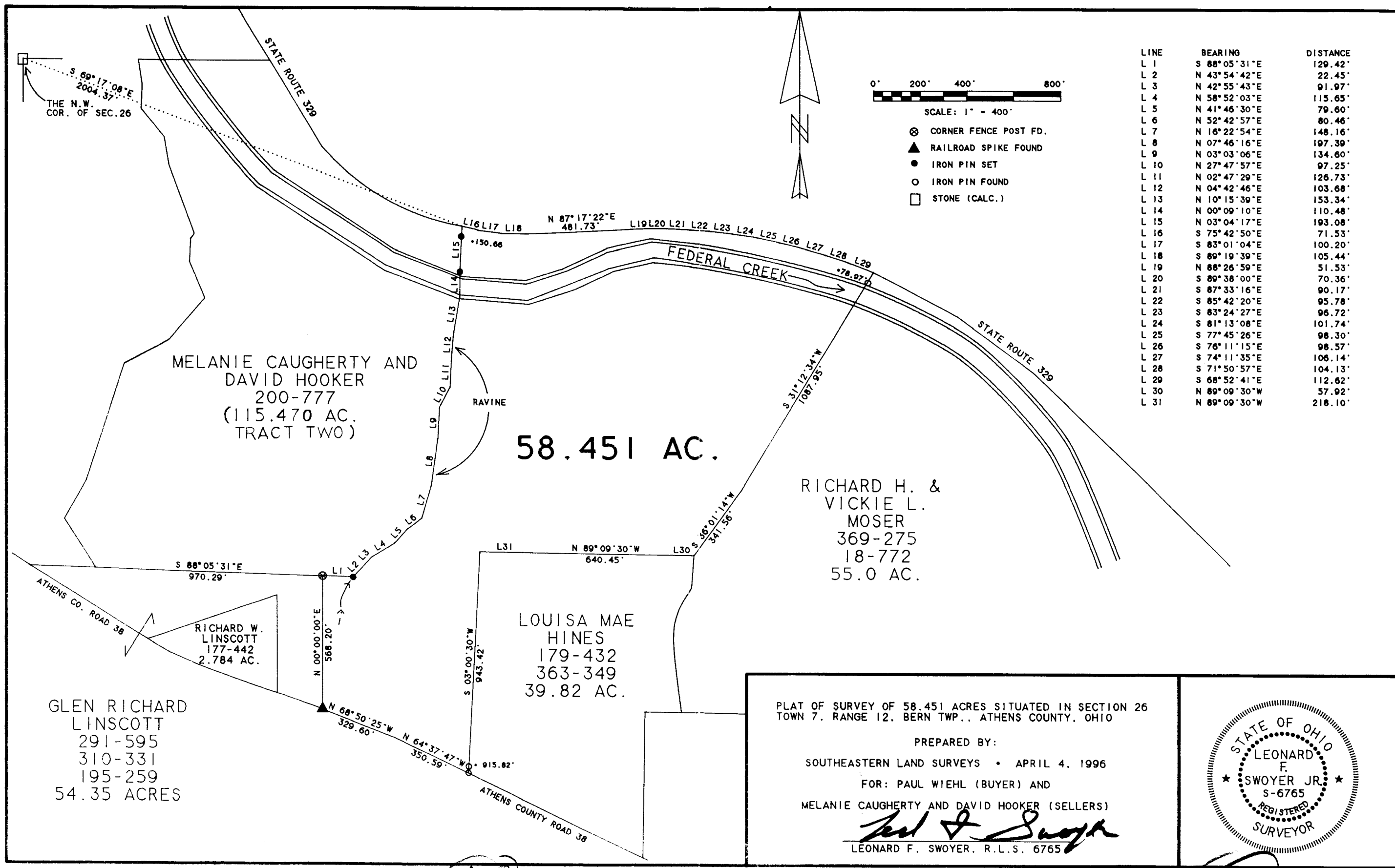
The above description was prepared under the supervision of Leonard F. Swoyer Professional Land Surveyor Number 6765 and based on a survey performed by Southeastern Land Surveys dated April 4, 1996.

Subject to all easements and right of ways of record.

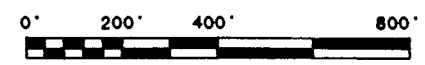
Description checked for
Mathematical Accuracy
ATHENS COUNTY
ENGINEER'S OFFICE
BY: *S. Blausen*
DATE: *4-10-96*

Descri-
Math
ATH
EN
E
D

666

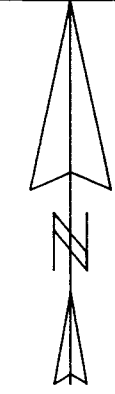


LINE	BEARING	DISTANCE
L 1	S 88° 05' 31" E	129.42'
L 2	N 43° 54' 42" E	22.45'
L 3	N 42° 55' 43" E	91.97'
L 4	N 58° 52' 03" E	115.65'
L 5	N 41° 46' 30" E	79.60'
L 6	N 52° 42' 57" E	80.46'
L 7	N 16° 22' 54" E	148.16'
L 8	N 07° 46' 16" E	197.39'
L 9	N 03° 03' 06" E	134.60'
L 10	N 27° 47' 57" E	97.25'
L 11	N 02° 47' 29" E	126.73'
L 12	N 04° 42' 46" E	103.68'
L 13	N 10° 15' 39" E	153.34'
L 14	N 00° 09' 10" E	110.48'
L 15	N 03° 04' 17" E	193.08'
L 16	S 75° 42' 50" E	71.53'
L 17	S 83° 01' 04" E	100.20'
L 18	S 89° 19' 39" E	105.44'
L 19	N 88° 26' 59" E	51.53'
L 20	S 89° 38' 00" E	70.36'
L 21	S 87° 33' 16" E	90.17'
L 22	S 85° 42' 20" E	95.78'
L 23	S 83° 24' 27" E	96.72'
L 24	S 81° 13' 08" E	101.74'
L 25	S 77° 45' 26" E	98.30'
L 26	S 76° 11' 15" E	98.57'
L 27	S 74° 11' 35" E	106.14'
L 28	S 71° 50' 57" E	104.13'
L 29	S 68° 52' 41" E	112.62'
L 30	N 89° 09' 30" W	57.92'
L 31	N 89° 09' 30" W	218.10'



SCALE: 1" = 400'

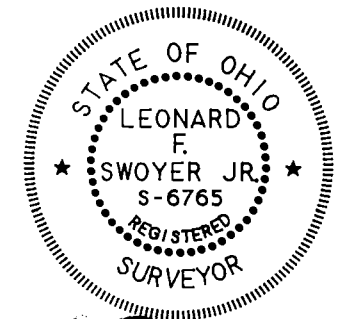
- ⊗ CORNER FENCE POST FD.
- ▲ RAILROAD SPIKE FOUND
- IRON PIN SET
- IRON PIN FOUND
- STONE (CALC.)



PLAT OF SURVEY OF 58.451 ACRES SITUATED IN SECTION 26 TOWN 7. RANGE 12. BERN TWP., ATHENS COUNTY, OHIO

PREPARED BY:
 SOUTHEASTERN LAND SURVEYS • APRIL 4, 1996
 FOR: PAUL WIEHL (BUYER) AND
 MELANIE CAUGHERTY AND DAVID HOOKER (SELLERS)

Leonard F. Swoyer
 LEONARD F. SWOYER, R.L.S. 6765



68

69