

A description of 30.50 ACRES from Arthur Gilchrist 106.0 ACRES

Bern Township, Town. 12, Range 7, and the Northeast Quarter of Section 29,

Athena County Ohio

Sec. 29

Starting for location at the Northeast corner of Section 29; thence along the section line South 5 deg-30 min West 757 feet to a point in the center of State Road 50, the place of beginning, located by a steel post set S 5-30 W 65 feet; thence continuing along the section line South 5 deg-30 min West 1233.4 feet; thence along the Verle Cofford north line fence North 82 deg-28 min West 2390.4 feet to a point in the center of State Route 50; thence along said Road the following: North 31 deg-05 min East 243.55 feet, North 23 deg-52 min East 152.57 feet, North 16 deg-06 min East 724.4 feet to a point at the intersection of State Route 50 and Athena County Road 49; thence continuing along State Route 50 the following: South 25 deg-49 min East 506.3 feet, South 15 deg-41 min East 180.82 feet, South 11 deg-10 min East 168.92 feet, South 38 deg-27 min East 110.42 feet, South 63 deg-57 min East 135.73 feet; North 84 deg-25 min East 488.10 feet, North 73 deg-30 min East 200.93 feet, North 48 deg-41 min East 173.11 feet, North 36 deg-56 min East 317.51 feet, North 71 deg-56 min East 910.46 feet, South 67 deg-32 min East 210.72 feet, North 87 deg-20 min East 124.68 feet, North 50 deg-24 min East 130.52 feet, North 17 deg-27 min East 153.01 feet, and North 19 deg-22 min East 124.68 feet

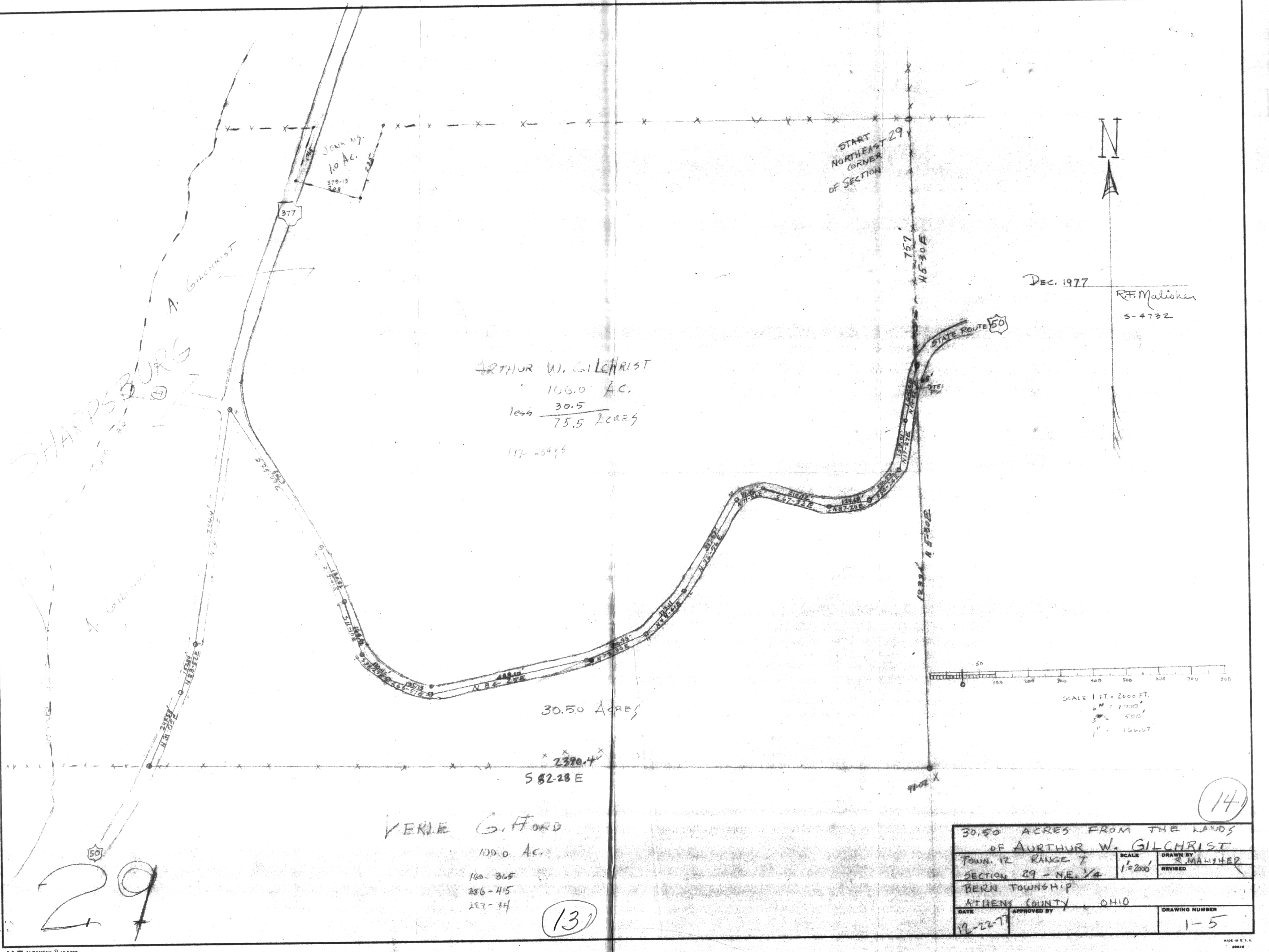
to the place of beginning and containing 30.50 Acres ±, as surveyed December 1977

R. F. Malisher, Reg. Surveyor of Ohio No. 54732.

PRD#29

Description checked for
 Mathematical Accuracy
 ATHENS COUNTY
 ENGINEER'S OFFICE
 By: T. Williams
 DATE: Dec 29 1977

12



SHARPSBURG

JENKINS
10 Ac.
379-13
308

START
NORTHEAST
CORNER
OF SECTION

DEC. 1977

R.F. Malisher
S-4732

ARTHUR W. GILCHRIST
106.0 AC.
less 30.5
75.5 ACRES

117-25496

30.50 ACRES

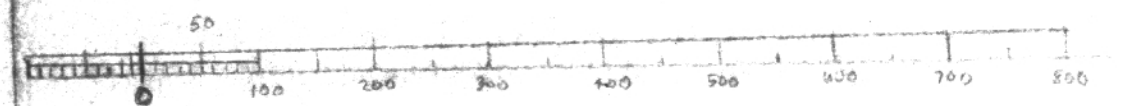
2370.4
S 82-28 E

VERLIE G. FORD

100.0 AC.

160-365
286-415
297-34

(13)



SCALE 1" = 200 FT.
1" = 200 FT.
3" = 500'
1" = 100.0'

29

(14)

30.50 ACRES FROM THE LANDS OF ARTHUR W. GILCHRIST		
TOWN 12	RANGE 7	SCALE 1" = 200'
SECTION 29 - N.E. 1/4		DRAWN BY R. MALISHER
BERN TOWNSHIP		REVISED
ATHENS COUNTY, OHIO		
DATE 12-22-77	APPROVED BY	DRAWING NUMBER 1-5