



CANNON LAND SURVEYING

7945 TWP RD. 114 NE
NEW LEXINGTON, OHIO 43764
614-342-2835

Deed Description

65.81 acres

Situated in the State of Ohio, County of Athens, Township of Bern, T-7, R-12, being a part of Federal Valley Coal Vol.268 Pg.242 and Continental Resources OR.81 Pg.01, being part of Section 7 & 13, and more particularly described as follows:

(Tract 1) Beginning at an iron pin found at the Northwest corner of Section 7; thence South 44 Degrees 17 Minutes 38 Seconds East 1124.94 feet to a point in the centerline of County Road 38 and the place of beginning; thence with said centerline North 44 Degrees 05 Minutes 33 Seconds East 91.29 feet to a point; thence leaving said centerline South 01 Degrees 21 Minutes 48 Seconds East 324.17 feet to an iron pin set, passing an iron pin set at 35.63 feet; thence the following 17 courses to points: South 09 Degrees 55 Minutes 59 Seconds East 179.78 feet; thence South 04 Degrees 14 Minutes 27 Seconds West 101.58 feet; thence South 10 Degrees 26 Minutes 23 Seconds West 85.28 feet; thence South 17 Degrees 30 Minutes 47 Seconds West 97.42 feet; thence South 00 Degrees 39 Minutes 45 Seconds West 62.55 feet; thence South 17 Degrees 46 Minutes 02 Seconds East 245.21 feet; thence South 21 Degrees 43 Minutes 34 Seconds East 171.25 feet; thence South 15 Degrees 38 Minutes 40 Seconds East 126.19 feet; thence South 00 Degrees 04 Minutes 37 Seconds East 156.37 feet; thence South 06 Degrees 12 Minutes 17 Seconds West 118.97 feet; thence South 14 Degrees 47 Minutes 22 Seconds West 134.39 feet; thence South 35 Degrees 43 Minutes 06 Seconds West 135.67 feet; thence South 15 Degrees 38 Minutes 21 Seconds West 58.56 feet; thence South 05 Degrees 22 Minutes 31 Seconds West 362.66 feet; thence South 04 Degrees 46 Minutes 53 Seconds East 182.49 feet; thence South 50 Degrees 29 Minutes 00 Seconds East 53.09 feet; thence South 16 Degrees 22 Minutes 44 Seconds East 53.49 feet; thence South 89 Degrees 49 Minutes 16 Seconds West 891.93 feet to an iron pin found on the west line of Section 7, passing an iron pin set at 30.22 feet; thence going into section 13 North 89 Degrees 59 Minutes 10 Seconds West 1108.78 feet to a point in the middle of a run; thence with said run the following three courses to points: North 10 Degrees 02 minutes 59 Seconds West 27.57 feet; thence North 44 Degrees 47 minutes 35 Seconds West 55.47 feet; thence North 35 Degrees 10 minutes 32 Seconds East 48.64 feet; thence leaving said run North 89 Degrees 59 minutes 10 Seconds West 74.65 feet to a point in the centerline of County Road 38, passing an iron pin set at 47.84 feet; thence with said centerline the following eight courses to points: North 33 Degrees 24 Minutes 16 Seconds East 380.78 feet; thence North 34 Degrees 52 minutes 44 Seconds East 520.78 feet; thence North 32 Degrees 20 Minutes 14 Seconds East 327.18 feet; thence North 40 Degrees 59 minutes 36 Seconds East 66.51 feet; thence North 57 Degrees 46 minutes 07 Seconds East 67.91 feet; thence North 67 Degrees 17 minutes 13 Seconds East 114.97 feet; thence North 77 Degrees 52 minutes 34 Seconds East 84.13 feet; thence North 84 Degrees 53 minutes 47 Seconds East 135.17 feet; thence North 82 Degrees 24 minutes 51 Seconds East 29.56 feet to a point on the East Line of Section 13 with an iron pin found at South 00 Degrees 10 Minutes 44 Seconds East 117.92 feet; thence continuing with the centerline of County Road 38 the following ten courses to points North 76 Degrees 32 Minutes 47 Seconds East 124.10 feet; thence North 49 Degrees 33 minutes 00 Seconds East 85.22 feet; thence North 36 Degrees 05 minutes 07 Seconds East 69.14 feet; thence North 19 Degrees 56 minutes 17 Seconds East 83.05 feet; thence North 14 Degrees 31 minutes 31 Seconds East 135.57 feet; thence North 19 Degrees 22 minutes 47 Seconds East 155.39 feet; thence North 10 Degrees 16 minutes 54 Seconds East 63.20 feet; thence North 14 Degrees 23 Minutes 03 Seconds West 71.20 feet; thence North 38 Degrees 29 minutes 41 Seconds West 87.75 feet; thence

91

BER # 74 # 13



CANNON LAND SURVEYING

7945 TWP RD. 114 NE
NEW LEXINGTON, OHIO 43764
614-342-2835

North 51 Degrees 48 minutes 50 Seconds West 106.04 feet; thence continuing with said centerline the following nine courses to points North 44 Degrees 33 minutes 46 Seconds West 64.87 feet; thence North 11 Degrees 13 Minutes 23 Seconds West 41.67 feet; thence North 30 Degrees 08 minutes 34 Seconds East 26.74 feet; thence North 67 Degrees 08 minutes 47 Seconds East 55.54 feet; thence North 80 Degrees 02 minutes 14 Seconds East 244.77 feet; thence North 67 Degrees 14 minutes 34 Seconds East 124.59 feet; thence North 50 Degrees 39 Minutes 40 Seconds East 108.30 feet; thence North 43 Degrees 33 Minutes 28 Seconds East 192.54 feet to the place of beginning containing 41.57 acres in section 7 and 24.24 acres in section 13, with a total of 65.81 acres more or less, subject to all legal Highways and easements.

Also a 40 foot easement being 20 feet on each side of the following described centerline; beginning at an iron pin found at the Northwest corner of Section 7; thence South 44 Degrees 17 Minutes 38 Seconds East 1124.94 feet to a point in the centerline of County Road 38 place of beginning; thence leaving said centerline South 10 Degrees 00 Minutes 23 Seconds East 545.19 feet to a point; thence the following 15 courses to points: South 10 Degrees 26 Minutes 23 Seconds West 85.28 feet; thence South 17 Degrees 30 Minutes 47 Seconds West 97.42 feet; thence South 00 Degrees 39 Minutes 45 Seconds West 62.55 feet; thence South 17 Degrees 46 Minutes 02 Seconds East 245.21 feet; thence South 21 Degrees 43 Minutes 34 Seconds East 171.25 feet; thence South 15 Degrees 38 Minutes 40 Seconds East 126.19 feet; thence South 00 Degrees 04 Minutes 37 Seconds East 156.37 feet; thence South 06 Degrees 12 Minutes 17 Seconds West 118.97 feet; thence South 14 Degrees 47 Minutes 22 Seconds West 134.39 feet; thence South 35 Degrees 43 Minutes 06 Seconds West 135.67 feet; thence South 15 Degrees 38 Minutes 21 Seconds West 58.56 feet; thence South 05 Degrees 22 Minutes 31 Seconds West 362.66 feet; thence South 04 Degrees 46 Minutes 53 Seconds East 182.49 feet; thence South 50 Degrees 29 Minutes 00 Seconds East 53.09 feet; thence South 16 Degrees 22 Minutes 44 Seconds East 53.49 feet with a reference pin located at South 89 Degrees 49 Minutes 16 Seconds West 30.22 feet.

See plat attached.

Subject to the R/W of County Road 38.

Iron pins set are 5/8 inch rebar with plastic identification caps.

Bearings are based on the West Line of Section 7 as being South 00 Degrees 10 Minutes 44 Seconds East.

This description was written from a survey made May 17, 1996.

Kevin Cannon
Reg. No. 7224

5/17/96
Date

Witnessed for
Accuracy
by
S. Blausen
1-2-97



92

Cannon Land Surveying

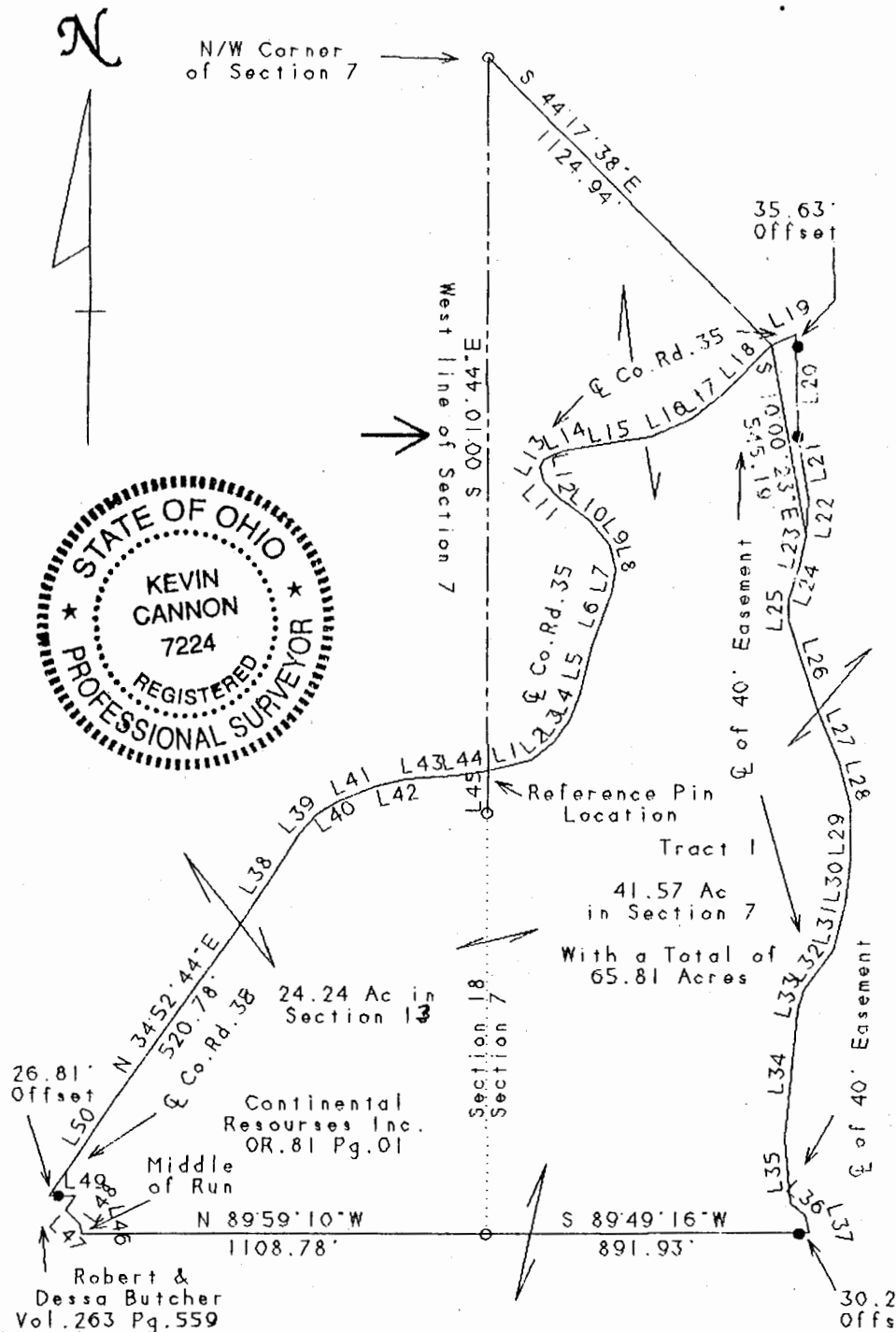
7945 Twp. Rd. 114 NE
New Lexington, Ohio 43764
(614) 342-2835

Bearings Shown Hereon are to an Assumed Meridian and Are Used to Denote Angles Only.

Data References: U. S. G. S. Maps, Tax Maps, Deed Descriptions, and Existing Monumentation.

This Survey is Subject to any Facts That May be Disclosed by a Full and Accurate Title Search.

LINE	BEARING	DISTANCE
L 1	N 76°32'47"E	124.10'
L 2	N 49°33'00"E	85.22'
L 3	N 36°05'07"E	69.14'
L 4	N 19°56'17"E	83.05'
L 5	N 14°31'31"E	135.57'
L 6	N 19°22'47"E	155.39'
L 7	N 10°16'54"E	63.20'
L 8	N 14°23'03"W	71.20'
L 9	N 38°29'41"W	87.75'
L 10	N 51°48'50"W	106.04'
L 11	N 44°33'46"W	64.87'
L 12	N 11°13'23"W	41.67'
L 13	N 30°08'34"E	26.74'
L 14	N 67°08'47"E	55.54'
L 15	N 80°02'14"E	244.77'
L 16	N 67°14'34"E	124.59'
L 17	N 50°39'40"E	108.30'
L 18	N 43°33'28"E	192.54'
L 19	N 44°05'33"E	91.29'
L 20	S 01°21'48"E	324.17'
L 21	S 09°55'59"E	179.78'
L 22	S 04°14'27"W	101.58'
L 23	S 10°26'23"W	85.28'
L 24	S 17°30'47"W	97.42'
L 25	S 00°49'45"W	62.55'
L 26	S 17°46'02"E	245.21'
L 27	S 21°43'34"E	171.25'
L 28	S 15°38'40"E	126.19'
L 29	S 00°04'37"E	156.37'
L 30	S 06°12'17"W	118.97'
L 31	S 14°47'22"W	134.39'
L 32	S 35°43'06"W	135.67'
L 33	S 15°38'21"W	58.56'
L 34	S 05°22'31"W	362.66'
L 35	S 04°46'53"E	182.49'
L 36	S 50°29'00"E	53.09'
L 37	S 16°22'44"E	53.49'
L 38	N 32°20'14"E	327.18'
L 39	N 40°59'36"E	66.51'
L 40	N 57°46'07"E	67.91'
L 41	N 67°17'13"E	114.97'
L 42	N 77°52'34"E	84.13'
L 43	N 84°53'47"E	135.17'
L 44	N 82°24'51"E	89.56'
L 45	S 00°10'44"E	117.82'

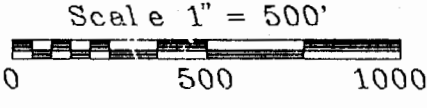


Legend

- Iron Pin Set
- 5/8" Rebar W/Cap
- Iron Pin Found
- ⊗ Post
- ▲ R.R. Spike Set
- △ R.R. Spike Found
- ⊙ Drilled Hole 5/8"
- Stone Found
- PK Nail Set
- ⊙ PK Nail Found
- *-x Fence
- ➔ Basis Of Bearings

Survey For: Paul Oberhauser
State: Ohio
County: Athens
Township: Bern
T-7 R-12 Lot: N/A
Section: 7
City or Village: N/A
Subdivision: N/A

LINE	BEARING	DISTANCE
L 46	N 10°02'59"W	27.57'
L 47	N 44°47'35"W	55.47'
L 48	N 35°10'32"E	48.64'
L 49	N 89°59'10"W	74.65'
L 50	N 33°24'6"E	380.73'



Kevin Cannon
Reg. # 7224

5/17/96
Date

93