



CANNON LAND SURVEYING

7945 TWP RD. 114 NE
NEW LEXINGTON, OHIO 43764
614-342-2835

DEED DESCRIPTION

Situated in the State of Ohio, County of Athens, Township of Bern, T-7, R-12, being a part of Mark Howdysshell Trustee OR 203 Pg.629, being part of Fractional Sections 7,13,19 & 25, and more particularly described as follows:

(Tract 8) Beginning at an iron pin set at the Northwest corner of Fractional Section 13; thence with the North line of said fraction North 89 Degrees 14 Minutes 58 Seconds East 628.68 feet to a point in the centerline of Township Road 196 and the place of beginning; thence leaving said fraction line and with said centerline the following seven courses to points: South 00 Degrees 58 Minutes 00 Seconds East 43.53 feet; thence South 08 Degrees 24 Minutes 07 Seconds East 305.26 feet; thence South 01 Degrees 30 Minutes 34 Seconds East 138.16 feet; thence South 08 Degrees 10 Minutes 33 Seconds West 125.68 feet; thence South 01 Degrees 39 Minutes 36 Seconds West 168.42 feet; thence South 09 Degrees 12 Minutes 20 Seconds East 113.51 feet; thence South 21 Degrees 22 Minutes 42 Seconds East 21.32 feet; thence leaving said centerline South 60 Degrees 02 Minutes 04 Seconds West 437.54 feet to an iron pin set, passing an iron pin set at 19.27 feet; thence North 65 Degrees 37 Minutes 05 Seconds West 493.38 feet to an iron pin set; thence North 58 Degrees 58 Minutes 48 Seconds West 695.61 feet to an iron pin set; thence North 55 Degrees 01 Minutes 57 Seconds West 502.45 feet to an iron pin set; thence North 33 Degrees 39 Minutes 11 Seconds East 510.77 feet to an iron pin set; thence North 42 Degrees 32 Minutes 00 Seconds East 432.78 feet to a point, passing an iron pin set at 417.86 feet; thence North 28 Degrees 23 Minutes 45 Seconds West 185.13 feet to a point; thence North 59 Degrees 59 Minutes 53 Seconds East 1280.65 feet to a point in the centerline of Township Road 196, passing iron pins set at 15.48 feet and 1243.51 feet; thence with said centerline the following eight courses to points: South 12 Degrees 10 Minutes 12 Seconds West 144.10 feet; thence South 03 Degrees 13 minutes 20 Seconds East 82.63 feet; thence South 14 Degrees 14 Minutes 20 Seconds East 202.19 feet; thence South 18 Degrees 08 Minutes 11 Seconds East 156.06 feet; thence South 14 Degrees 51 Minutes 26 Seconds East 185.35 feet; thence South 11 Degrees 42 Minutes 07 Seconds East 261.29 feet; thence South 04 Degrees 54 Minutes 02 Seconds East 144.15 feet; thence South 00 Degrees 58 Minutes 00 Seconds East 124.32 feet to the place of beginning, containing 14.09 acres in fractional section 13, 16.46 in fraction 19, 14.10 acres in fraction 25, and 14.09 acres in fraction 7, with a total of 60.32 acres, more or less, subject to all legal highways and easements.


See plat attached.

Subject to R/W of Township Road 196.

Iron pins set are 5/8 inch rebar with plastic identification caps.

Bearings are based on the north line of Fraction 13 as being North 89 Degrees 14 Minutes 58 Seconds East.

This description was written from a survey made by Kevin Cannon 7224 March 3, 1998.



Kevin Cannon
Reg. No. 7224

3/3/98
Date



PRU # 7

CANNON LAND SURVEYING

7945 TWP RD. 114 NE
NEW LEXINGTON, OHIO 43764
614-342-2835

Also the Following 60' easement into Lot 8.

Also the following 60 foot easement being 30 foot on each side of the following described centerline: beginning at a stone found at the Northwest corner of fraction 30; thence South 19 Degrees 56 Minutes 46 Seconds East 2061.52 feet to a point in the centerline of Township Road 201 and the place of beginning; thence leaving said Township Road the following forty-nine courses to point: South 27 Degrees 48 Minutes 53 Seconds East 268.02 feet; thence South 59 Degrees 21 Minutes 20 Seconds East 331.34 feet; thence South 41 Degrees 15 Minutes 14 Seconds East 348.06 feet; thence South 27 Degrees 58 Minutes 43 Seconds East 161.15 feet; thence South 38 Degrees 08 Minutes 22 Seconds East 191.42 feet; thence South 44 Degrees 19 Minutes 12 Seconds East 125.83 feet; thence South 29 Degrees 59 Minutes 04 Seconds East 74.07 feet; thence South 08 Degrees 59 Minutes 25 Seconds East 108.69 feet; thence South 11 Degrees 11 Minutes 18 Seconds East 127.12 feet; thence South 24 Degrees 42 Minutes 19 Seconds East 95.67 feet; thence South 28 Degrees 35 Minutes 28 Seconds East 232.80 feet; thence South 42 Degrees 09 Minutes 25 Seconds East 57.01 feet; thence South 66 Degrees 17 Minutes 23 Seconds East 152.95 feet; thence South 73 Degrees 31 Minutes 50 Seconds East 148.08 feet; thence South 62 Degrees 22 Minutes 44 Seconds East 85.65; thence South 37 Degrees 38 Minutes 25 Seconds East 138.52 feet; thence South 58 Degrees 54 minutes 48 Seconds East 115.99 feet; thence South 61 Degrees 24 Minutes 15 Seconds East 77.48 feet; thence South 41 Degrees 04 minutes 33 Seconds East 85.21 feet; thence South 26 Degrees 03 Minutes 54 Seconds East 239.99 feet; thence South 38 Degrees 21 Minutes 44 Seconds East 79.96 feet; thence South 53 Degrees 51 minutes 57 Seconds East 58.86 feet; thence South 44 Degrees 46 Minutes 54 Seconds East 109.42 feet; thence South 15 Degrees 43 Minutes 44 Seconds East 117.14 feet; thence South 18 Degrees 13 Minutes 58 Seconds East 112.40 feet; thence South 43 Degrees 37 Minutes 25 Seconds East 63.32 feet; thence South 45 Degrees 51 Minutes 02 Seconds East 62.21 feet; thence South 30 Degrees 32 Minutes 59 Seconds East 109.24 feet; thence South 09 Degrees 48 Minutes 15 Seconds East 59.22 feet; thence South 19 Degrees 52 minutes 24 Seconds West 119.42 feet; thence South 05 Degrees 53 Minutes 31 Seconds East 126.61 feet; thence South 32 Degrees 46 minutes 41 Seconds East 170.70 feet; thence South 50 Degrees 31 Minutes 02 Seconds East 114.02 feet; South 43 Degrees 46 Minutes 21 Seconds East 102.28 feet; thence South 31 Degrees 54 Minutes 00 Seconds East 121.45 feet; thence South 42 Degrees 28 minutes 18 Seconds East 100.74 feet; thence South 46 Degrees 06 Minutes 16 Seconds East 136.80 feet; thence South 31 Degrees 08 minutes 46 Seconds East 87.80 feet; thence South 20 Degrees 13 minutes 30 Seconds East 155.56 feet; thence South 38 Degrees 29 minutes 05 Seconds East 47.55 feet; thence South 62 Degrees 00 minutes 13 Seconds East 53.13 feet; thence South 66 Degrees 55 Minutes 26 Seconds East 173.60 feet; thence South 59 Degrees 57 Minutes 44 Seconds East 108.42 feet; thence South 43 Degrees 22 Minutes 51 Seconds East 42.66 feet; thence South 27 Degrees 24 Minutes 33 Seconds East 53.78 feet; thence South 12 Degrees 47 Minutes 34 Seconds East 142.72 feet; thence South 44 Degrees 46 Minutes 54 Seconds East 109.42 feet; thence South 10 Degrees 23 Minutes 50 Seconds East 250.10 feet; thence South 19 Degrees 59 Minutes 30 Seconds East 100.67 feet; thence South 81 Degrees 56 Minutes 22 Seconds East 266.85 feet.

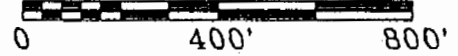
N Cannon Land Surveying

7945 Twp. Rd. 114 NE
New Lexington, Ohio 43764
(614) 342-2835

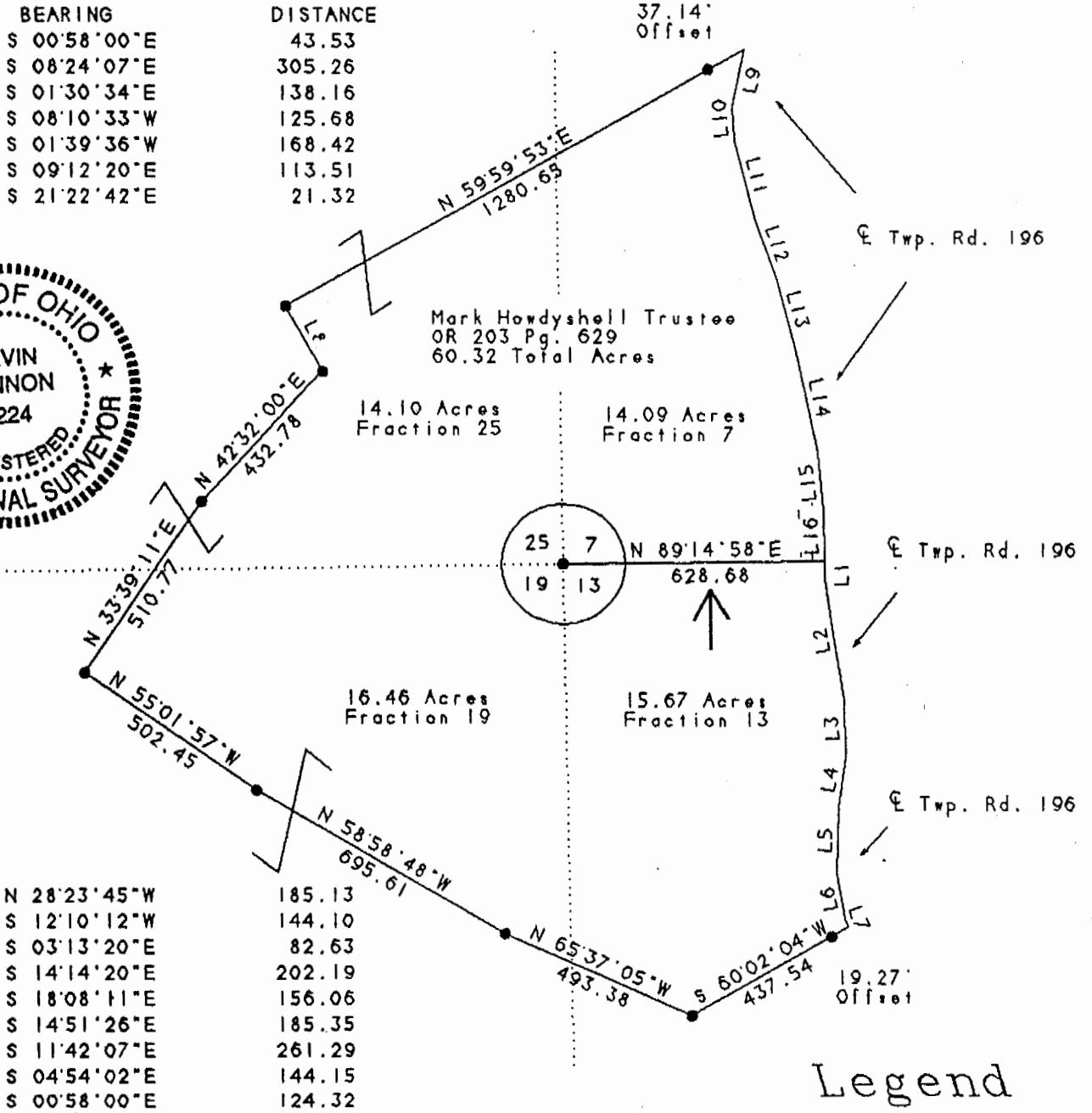
Bearings Shown Hereon are to an Assumed Meridian and Are Used to Denote Angles Only.
Data References: U.S.G.S. Maps, Tax Maps, Deed Descriptions, and Existing Monumentation.

This Survey is Subject to any Facts That May be Disclosed by a Full and Accurate Title Search.

Scale 1" = 400'



LINE	BEARING	DISTANCE
L 1	S 00°58'00"E	43.53
L 2	S 08°24'07"E	305.26
L 3	S 01°30'34"E	138.16
L 4	S 08°10'33"W	125.68
L 5	S 01°39'36"W	168.42
L 6	S 09°12'20"E	113.51
L 7	S 21°22'42"E	21.32



L 8	N 28°23'45"W	185.13
L 9	S 12°10'12"W	144.10
L 10	S 03°13'20"E	82.63
L 11	S 14°14'20"E	202.19
L 12	S 18°08'11"E	156.06
L 13	S 14°51'26"E	185.35
L 14	S 11°42'07"E	261.29
L 15	S 04°54'02"E	144.15
L 16	S 00°58'00"E	124.32

Legend

- Iron Pin Set
- 5/8" Rebar W/Cap
- Iron Pin Found
- ⊗ Post
- ▲ R.R. Spike Set
- △ R.R. Spike Found
- ⊙ Drilled Hole 5/8"
- Stone Found
- PK Nail Set
- ⊙ PK Nail Found
- ✂ Fence
- ➔ Basis Of Bearings

Kevin Cannon
Kevin Cannon
Reg. # 7224

3/4/98
Date

Survey For: Paul Oberhauser
State: Ohio
County: Athens
Township: Bern
T- 7 R- 12 Lot: N/A
Section: Fractions 7, 13, 19 & 25
City or Village: N/A
Subdivision: N/A
Parcel #: N/A

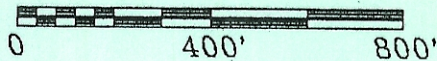
N Cannon Land Surveying

7945 Twp. Rd. 114 NE
New Lexington, Ohio 43764
(614) 342-2835

Bearings Shown Hereon are to an Assumed Meridian and Are Used to Denote Angles Only.
Data References: U.S.G.S. Maps, Tax Maps, Deed Descriptions, and Existing Monumentation.

This Survey is Subject to any Facts That May be Disclosed by a Full and Accurate Title Search.

Scale 1" = 400'

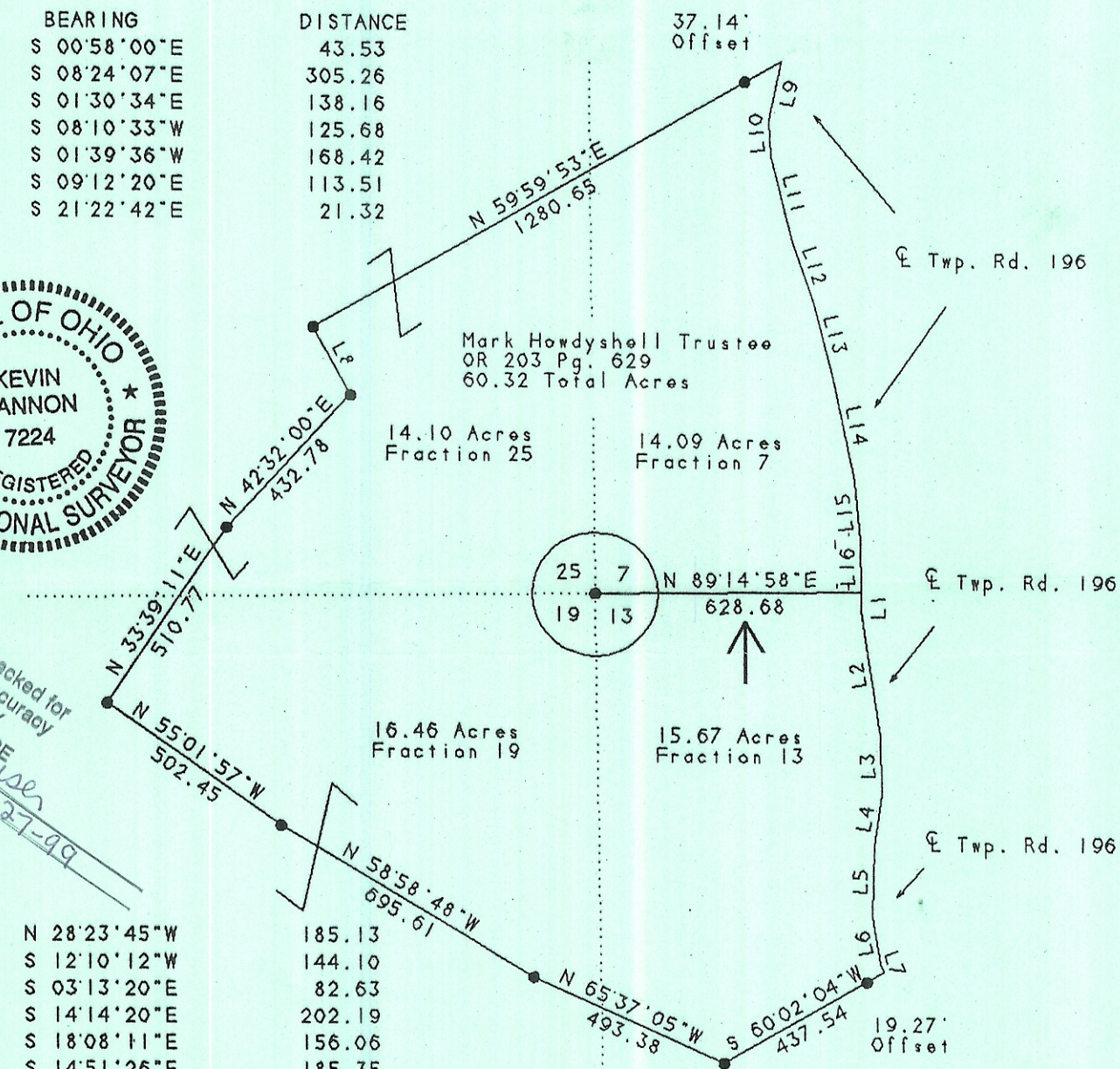


LINE	BEARING	DISTANCE
L 1	S 00°58'00"E	43.53
L 2	S 08°24'07"E	305.26
L 3	S 01°30'34"E	138.16
L 4	S 08°10'33"W	125.68
L 5	S 01°39'36"W	168.42
L 6	S 09°12'20"E	113.51
L 7	S 21°22'42"E	21.32



Description checked for
Mathematical Accuracy
ATHENS COUNTY
ENGINEER'S OFFICE
BY: *S. Blausen*
DATE: *12-27-99*

L 8	N 28°23'45"W	185.13
L 9	S 12°10'12"W	144.10
L 10	S 03°13'20"E	82.63
L 11	S 14°14'20"E	202.19
L 12	S 18°08'11"E	156.06
L 13	S 14°51'26"E	185.35
L 14	S 11°42'07"E	261.29
L 15	S 04°54'02"E	144.15
L 16	S 00°58'00"E	124.32



Legend

- Iron Pin Set
- 5/8" Rebar W/Cap
- Iron Pin Found
- ⊗ Post
- ▲ R.R. Spike Set
- △ R.R. Spike Found
- ⊙ Drilled Hole 5/8"
- Stone Found
- PK Nail Set
- ⊙ PK Nail Found
- ✕✕ Fence
- ➔ Basis Of Bearings

[Signature]
Kevin Cannon
Reg. # 7224

3/4/98
Date

Survey For: Paul Oberhauser
State: Ohio
County: Athens
Township: Bern
T- 7 R- 12 Lot: N/A
Section: Fractions 7, 13, 19 & 25
City or Village: N/A
Subdivision: N/A
Parcel #: N/A