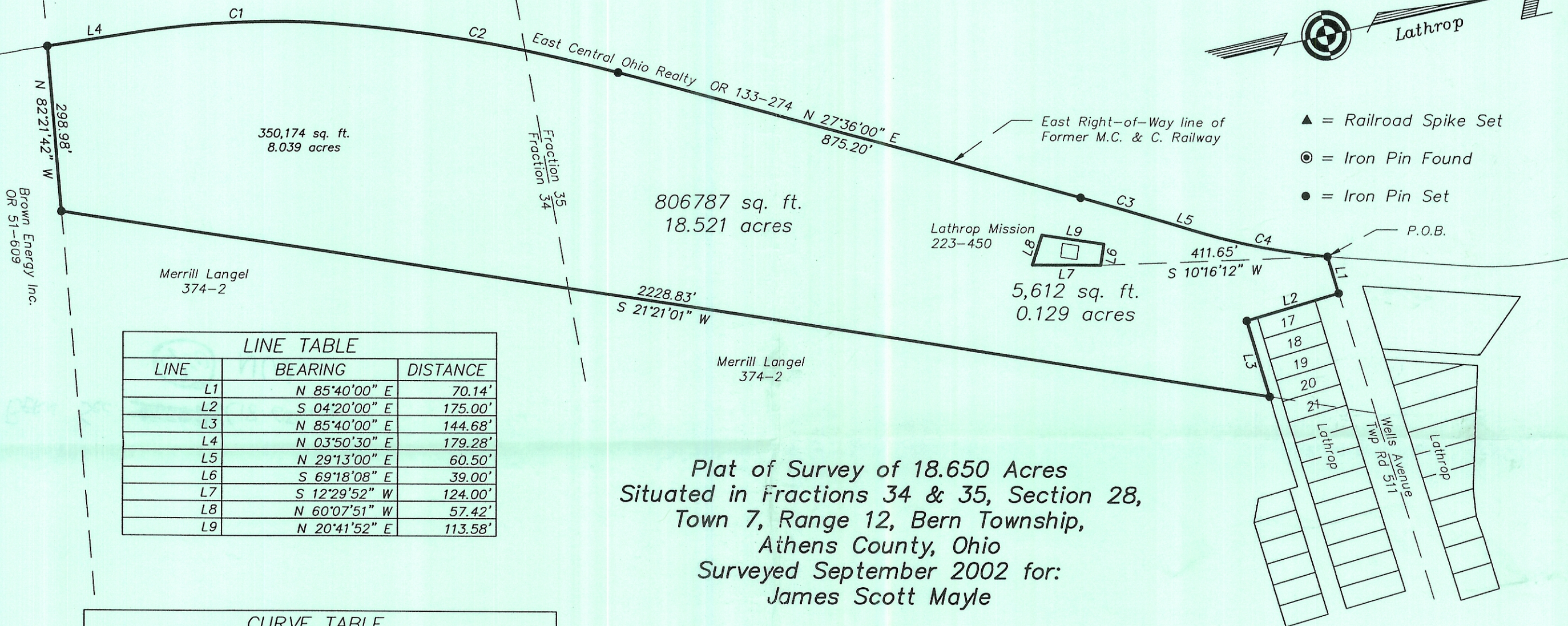


- ▲ = Railroad Spike Set
- ⊙ = Iron Pin Found
- = Iron Pin Set



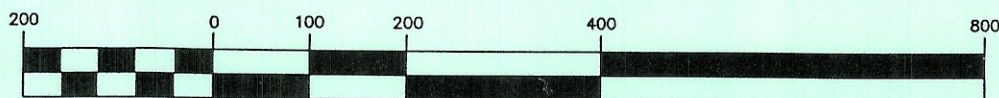
LINE TABLE		
LINE	BEARING	DISTANCE
L1	N 85°40'00" E	70.14'
L2	S 04°20'00" E	175.00'
L3	N 85°40'00" E	144.68'
L4	N 03°50'30" E	179.28'
L5	N 29°13'00" E	60.50'
L6	S 69°18'08" E	39.00'
L7	S 12°29'52" W	124.00'
L8	N 60°07'51" W	57.42'
L9	N 20°41'52" E	113.58'

CURVE TABLE			
CURVE	RADIUS	CHORD BEARING	CHORD LENGTH
C1	1502.89'	S 10°23'07" W	342.54'
C2	2839.79'	S 22°15'52" W	528.12'
C3	5704.58'	S 28°24'30" W	160.96'
C4	1170.92'	N 23°20'51" E	239.47'

Plat of Survey of 18.650 Acres
 Situated in Fractions 34 & 35, Section 28,
 Town 7, Range 12, Bern Township,
 Athens County, Ohio
 Surveyed September 2002 for:
 James Scott Mayle

Gregory K. Wright
 Gregory K. Wright

GRAPHIC SCALE



(IN FEET)
 1 inch = 200 ft.

Description checked for
 Mathematical Accuracy
 ATHENS COUNTY
 ENGINEER'S OFFICE
 BY: *S. Blausen*
 DATE: *9-27-02*



Gregory K. Wright
 Professional Engineer
 Professional Surveyor

11684 Channingway Blvd
 The Plains, Ohio 45780
 740-797-4142
 FAX 740-797-8623