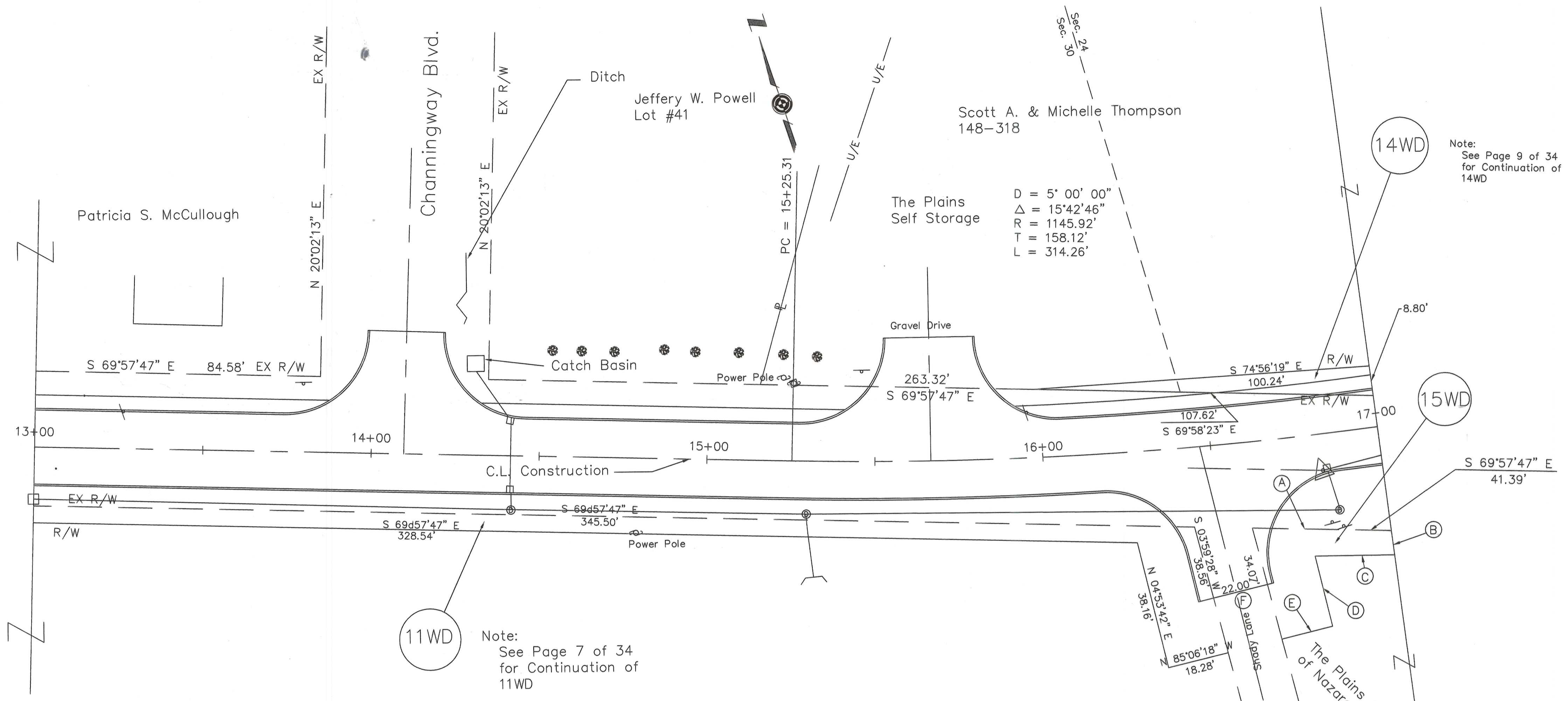


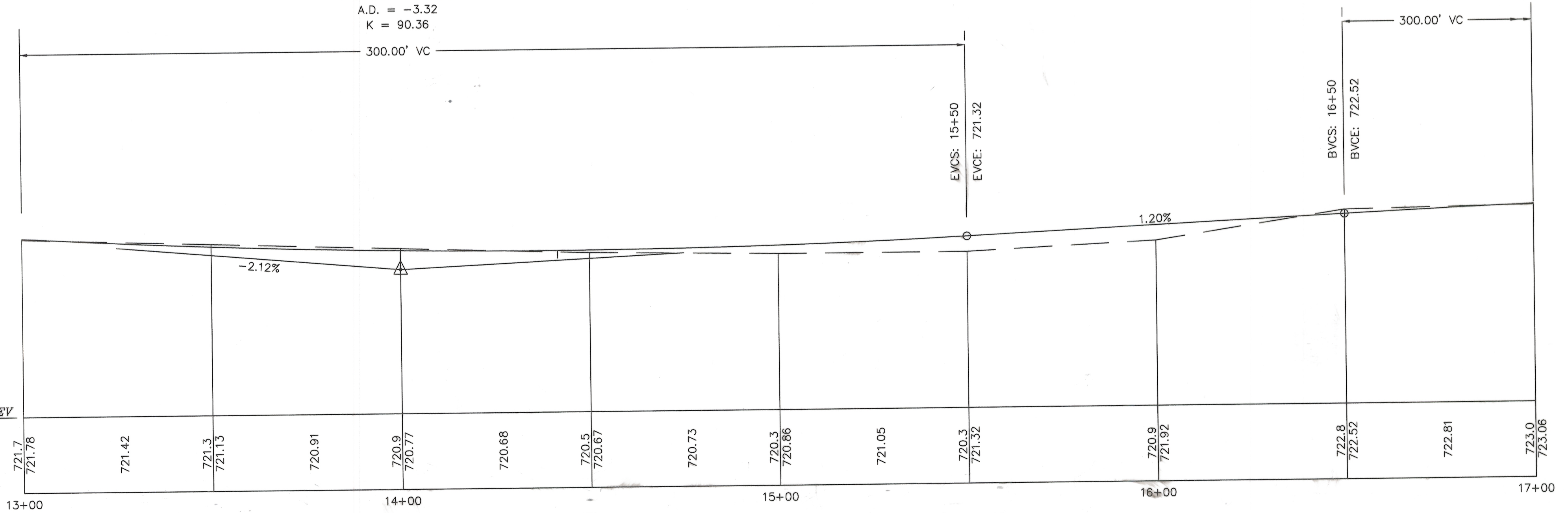
AS-BUILT NOV. 1998



- (A) S 69°57'47" E  
41.39'
- (B) S 11°18'08" W  
7.29'
- (C) N 71°53'00" W  
23.69'
- (D) S 04°53'42" W  
21.43'
- (E) N 85°06'18" W  
15.54'
- (F) N 03°59'28" E  
34.07'

LOW POINT ELEV = 720.67  
 LOW POINT STA = 14+41.57  
 PVI STA = 14+00  
 PVI ELEV = 719.52  
 A.D. = -3.32  
 K = 90.36

HIGH POINT ELEV = 724.02  
 HIGH POINT STA = 19+00  
 PVI STA = 18+00  
 PVI ELEV = 724.32  
 A.D. = 1.44  
 K = 208.33



CENTERLINE SURVEY  
 ATHENS TOWNSHIP  
 CONNETT ROAD  
 ENV 498 B

*Anita Stealy* 6/50/99  
 Athens County Engineer

*Justin* 7-1-99  
 Code Enforcement/Zoning Inspector

*David J. Lovett* 7/22/99  
 Athens County Sanitarian

19990006341  
 Filed for Record in  
 ATHENS COUNTY, OHIO  
 JULIA MICHAEL SCOTT  
 On 07-27-1999 At 01:19 pm.  
 PLAT 43.20 ENV 498 B

*George A. Mara*  
 George A. Mara P.S. #5508

