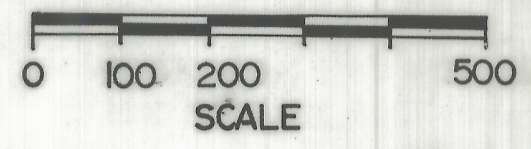


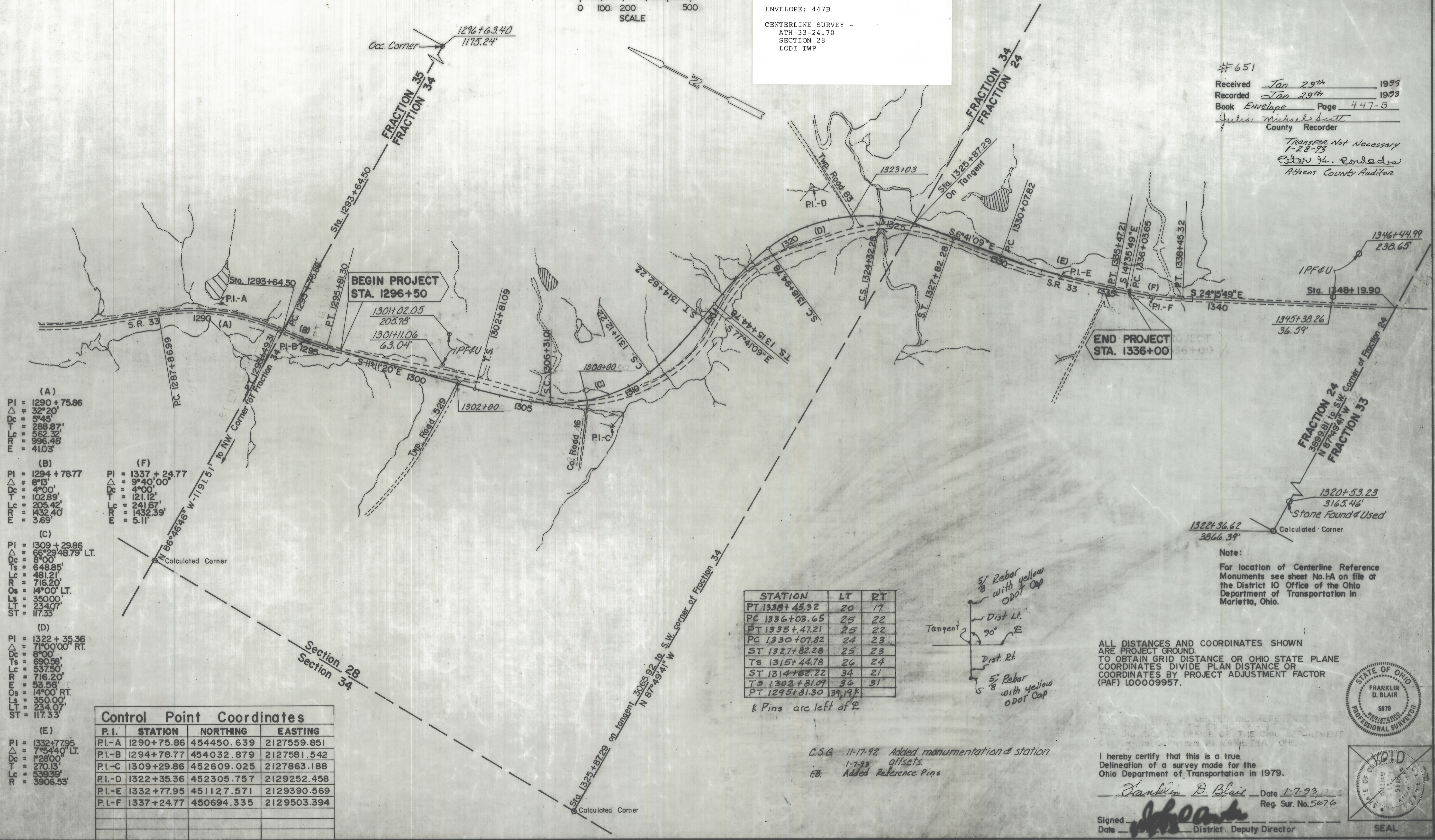
CENTERLINE SURVEY PLAT
 ATHENS COUNTY, LODI TOWNSHIP
 SECTION 28, FRACTIONS 24, 34, 35, T. 4 N., R. 13 W.

| | | | |
|----------------------------|-------------------|-----------------------|----|
| CALC. BY: <i>C.S.G.</i> | FHWA REGION: OHIO | PROJECT: ATH-33-24.70 | 1 |
| DATE: 4-16-92 | STATE: OHIO | | 7 |
| CHKD BY: | FHWA REGION: | | 66 |
| DATE: | | | 72 |
| FEDERAL PROJECT: RS-931(1) | STATE PROJECT: | 101910 | |



ENVELOPE: 447B
 CENTERLINE SURVEY -
 ATH-33-24.70
 SECTION 28
 LODI TWP

#651
 Received Jan 29th 1993
 Recorded Jan 29th 1993
 Book Envelope Page 447-13
Julius Michael Scott
 County Recorder
 Transfer Not Necessary
 1-28-93
Robert J. Coladara
 Athens County Auditor



- (A)
 PI = 1290 + 75.86
 Δ = 32° 20'
 Dc = 5° 45'
 T = 288.87'
 Lc = 562.32'
 R = 996.25'
 Os = 41.03'
- (B)
 PI = 1294 + 78.77
 Δ = 8° 15'
 Dc = 4° 00'
 T = 102.89'
 Lc = 205.42'
 R = 432.40'
 Os = 3.69'
- (C)
 PI = 1309 + 29.86
 Δ = 68° 29' 48.79" LT.
 Dc = 8° 00'
 T = 648.85'
 Lc = 481.21'
 R = 716.20'
 Os = 14° 00' LT.
 Ls = 350.00'
 Lt = 234.07'
 St = 117.33'
- (D)
 PI = 1322 + 35.36
 Δ = 71° 00' 00" RT.
 Dc = 8° 00'
 T = 690.58'
 Lc = 537.50'
 R = 716.20'
 Os = 53.58' RT.
 Ls = 14° 00' RT.
 Lt = 350.00'
 Lt = 234.07'
 St = 117.33'
- (E)
 PI = 1332 + 77.95
 Δ = 7° 54' 40" LT.
 Dc = 1° 28' 00"
 T = 270.13'
 Lc = 539.39'
 R = 3906.53'
- (F)
 PI = 1337 + 24.77
 Δ = 9° 40' 00"
 Dc = 4° 00'
 T = 121.12'
 Lc = 241.67'
 R = 1432.39'
 Os = 5.11'

| P.I. | STATION | NORTHING | EASTING |
|------|------------|------------|-------------|
| PI-A | 1290+75.86 | 454450.639 | 2127559.851 |
| PI-B | 1294+78.77 | 454032.879 | 2127581.542 |
| PI-C | 1309+29.86 | 452609.025 | 2127863.188 |
| PI-D | 1322+35.36 | 452305.757 | 2129252.458 |
| PI-E | 1332+77.95 | 451127.571 | 2129390.569 |
| PI-F | 1337+24.77 | 450694.335 | 2129503.394 |

| STATION | LT | RT |
|---------------|----|----|
| PT 1338+45.32 | 20 | 17 |
| PC 1336+03.65 | 25 | 22 |
| PT 1335+47.21 | 25 | 22 |
| PC 1330+07.82 | 24 | 23 |
| ST 1327+82.28 | 25 | 23 |
| Ts 1315+44.78 | 26 | 24 |
| ST 1314+62.22 | 34 | 21 |
| Ts 1302+81.09 | 36 | 31 |
| PT 1295+81.30 | 39 | 19 |

5" Rebar with yellow ODOT Cap
 Dist Lt.
 90°
 Tangent
 Dist Rt.
 5" Rebar with yellow ODOT Cap

ALL DISTANCES AND COORDINATES SHOWN ARE PROJECT GROUND. TO OBTAIN GRID DISTANCE OR OHIO STATE PLANE COORDINATES DIVIDE PLAN DISTANCE OR COORDINATES BY PROJECT ADJUSTMENT FACTOR (PAF) 1.00009957.

C.S.G. 11-17-92 Added monumentation & station offsets.
 F.B. Added Reference Pins

I hereby certify that this is a true Delineation of a survey made for the Ohio Department of Transportation in 1979.
Franklin D. Blair Date 1-7-93
 Reg. Sur. No. 5076
 Signed _____
 Date _____ District Deputy Director

