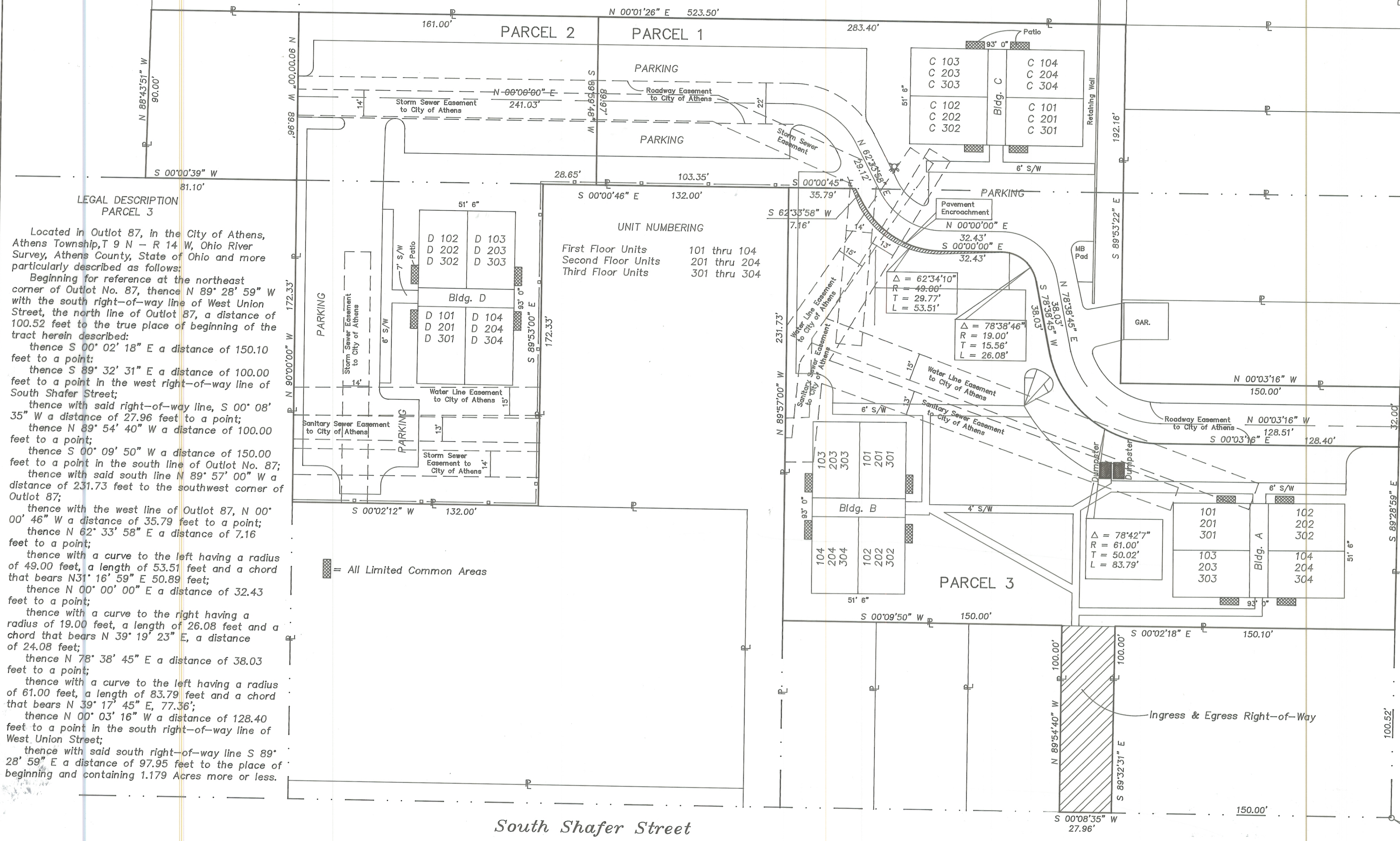
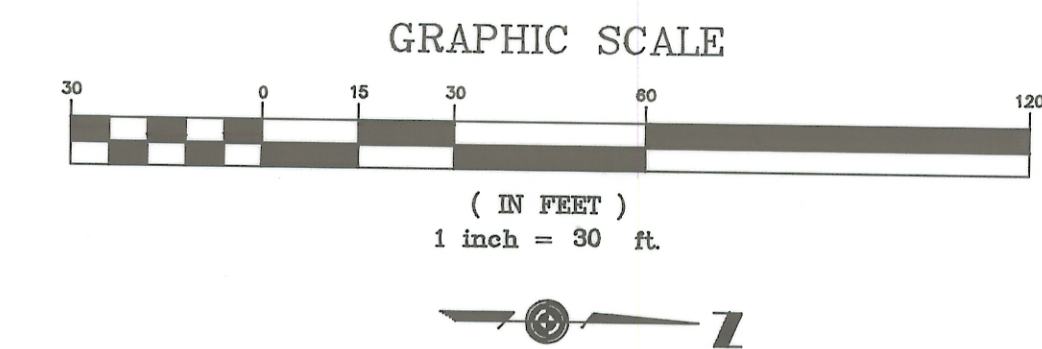


AMENDED EXHIBIT "E"



LEGAL DESCRIPTION
PARCEL 1

Located in Outlots 87 and 88, in the City of Athens, Athens Township, T9N - R14W, Ohio River Survey, Athens County, State of Ohio and more particularly described as follows:

Beginning for reference at the northeast corner of Outlot No. 87, thence north 89° 28' 59" west with the south right-of-way line of West Union Street, the north line of Outlot 87, a distance of 198.47 feet to a point, the true place of beginning of the tract herein described:

Thence south 00° 03' 16" east a distance of 128.40 feet to a point; thence with a curve to the right having a radius of 61.00 feet, a length of 83.79 feet and a chord that bears south 39° 17' 45" west, 77.36 feet;

Thence south 78° 38' 45" west a distance of 38.03 feet to a point;

Thence with a curve to the left having a radius of 19.00 feet, a length of 26.08 feet and a chord that bears south 39° 19' 23" west, 24.08 feet;

Thence south 00° 00' 00" west a distance of 32.43 feet to a point;

Thence with a curve to the right having a radius of 49.00 feet, a length of 53.51 feet and a chord that bears south 31° 16' 59" west, 50.89 feet;

Thence south 62° 33' 58" west a distance of 7.16 feet to a point in the west line of Outlot 87;

Thence with the west line of Outlot 87, south 00° 00' 45" east a distance of 35.79 feet to the southwest corner of Outlot 87 and the northwest corner of Lot 483;

Thence with the west line of Lot 483, south 00° 00' 46" east a distance of 103.35 feet;

Thence south 89° 59' 48" west a distance of 89.97 feet to a point in the east line of the 4.09 acre Gawande Tract as Recorded in Volume 369 at Page 429, Athens County Record of Deeds;

Thence with said Gawande line north 00° 01' 26" east a distance of 283.40 feet to a point;

Thence south 89° 53' 22" east a distance of 192.16 feet to a point;

Thence north 00° 03' 16" west a distance of 150.00 feet to a point in the south right-of-way line of West Union Street, the north line of Outlot 87;

Thence with said north line south 89° 28' 59" east a distance of 32.00 feet to the place of beginning and containing 0.874 acres more or less.

LEGAL DESCRIPTION
PARCEL 3

Located in Outlot 87, in the City of Athens, Athens Township, T9N - R14W, Ohio River Survey, Athens County, State of Ohio and more particularly described as follows:

Beginning for reference at the northeast corner of Outlot No. 87, thence north 89° 28' 59" W with the south right-of-way line of West Union Street, the north line of Outlot 87, a distance of 100.52 feet to the true place of beginning of the tract herein described:

thence S 00° 02' 18" E a distance of 150.10 feet to a point;

thence S 89° 32' 31" E a distance of 100.00 feet to a point in the west right-of-way line of South Shafer Street;

thence with said right-of-way line, S 00° 08' 35" W a distance of 27.96 feet to a point;

thence N 89° 54' 40" W a distance of 100.00 feet to a point;

thence S 00° 09' 50" W a distance of 150.00 feet to a point in the south line of Outlot No. 87;

thence with said south line N 89° 57' 00" W a distance of 231.73 feet to the southwest corner of Outlot 87;

thence with the west line of Outlot 87, N 00° 00' 46" W a distance of 35.79 feet to a point;

thence N 62° 33' 58" E a distance of 7.16 feet to a point;

thence with a curve to the left having a radius of 49.00 feet, a length of 53.51 feet and a chord that bears N31° 16' 59" E 50.89 feet;

thence N 00° 00' 00" E a distance of 32.43 feet to a point;

thence with a curve to the right having a radius of 19.00 feet, a length of 26.08 feet and a chord that bears N 39° 19' 23" E, a distance of 24.08 feet;

thence N 78° 38' 45" E a distance of 38.03 feet to a point;

thence with a curve to the left having a radius of 61.00 feet, a length of 83.79 feet and a chord that bears N 39° 17' 45" E, 77.36';

thence N 00° 03' 16" W a distance of 128.40 feet to a point in the south right-of-way line of West Union Street;

thence with said south right-of-way line S 89° 28' 59" E a distance of 97.95 feet to the place of beginning and containing 1.179 Acres more or less.

LEGAL DESCRIPTION
PARCEL 2

Located in Outlot 88 and Lot 483, in the City of Athens, Athens Township, T9N - R14W, Ohio River Survey, Athens County, State of Ohio and more particularly described as follows:

Beginning for reference at the northeast corner of Outlot No. 87, thence north 89° 28' 59" west with the south right-of-way line of West Union Street, the north line of Outlot 87, a distance of 198.47 feet to a point;

thence south 00° 03' 16" east a distance of 128.40 feet to a point;

thence with a curve to the right having a radius of 61.00 feet, a length of 83.79 feet and a chord that bears south 39° 17' 45" west, 77.36 feet;

thence south 78° 38' 45" west a distance of 38.03 feet to a point;

thence with a curve to the left having a radius of 19.00 feet, a length of 26.08 feet and a chord that bears south 39° 19' 23" west, 24.08, feet;

thence south 00° 00' 00" west a distance of 32.43 feet to a point;

thence with a curve to the right having a radius of 49.00 feet, a length of 53.51 feet and a chord that bears south 31° 16' 59" west, 50.89 feet;

thence south 62° 33' 58" west a distance of 7.16 feet to a point in the west line of Outlot 87;

thence with the west line of Outlot 87, south 00° 00' 46" east a distance of 35.79 feet to the south west corner of Outlot 87 and the northwest corner of Lot 483;

thence with the west line of Lot 483, south 00° 00' 46" east a distance of 103.35 feet to a point, the true place of beginning of the tract herein described:

Thence continuing with the west line of Lot 483, south 00° 00' 46" east a distance of 28.65 feet to a point;

Thence south 89° 53' 00" east a distance of 172.33 feet to a point;

Thence south 00° 02' 12" west a distance of 132.00 feet to a point in the south line of Lot 483;

Thence with said south line, north 90° 00' 00" west a distance of 172.33 feet to the southwest corner of Lot 483, the southeast

corner of Outlot 88;

Thence with the south line of Outlot 88, north 90° 00' 00" west a distance of 89.96 feet to a point in the east line of the 4.09 acre Gawanda Tract as Recorded in Volume 369 at Page 429, Athens County Records of Deeds;

Thence with said line, north 00° 01' 26" east a distance of 161.00 feet to a point;

Thence north 89° 59' 48" east a distance of 89.97 feet to the place of beginning and containing 0.856 acres more or less.

Owner, College Park Partnership

ENVELOPE: 439A
COLLEGE PARK - AMENDED
ATHENS



George A. Mara
George A. Mara, P.E., P.S.

12749
RECORDED 8-10-92
AT 2:37
BY: [Signature]
VOL. 439A
FILE ENV. 439A
4320

NO.	DATE	DESCRIPTION	BY
4	7/28/92	Delete Sidewalk	GAM
3	7/28/92	Add Ingress-Egress R/W	GAM
2	6/8/92	Add Sidewalks	GAM
1	6/5/92	Add Bldg. A & B	GAM

GEORGE A. MARA ENGINEERING, Inc.
CONSULTING ENGINEERS
ATHENS, OHIO

COLLEGE PARK
AS BUILT SURVEY

CONTRACT	JOB NO. AS-345
DRAWN BY:	SCALE: 1"=30'
CHECKED BY:	DATE: Sept. 1991
APPROVED BY:	SHEET 1 OF 1