

# BRANNER SURVEYING

MEMBER-PROFESSIONAL LAND SURVEYORS OF OHIO

12500 N. PEACH RIDGE ROAD  
ATHENS, OHIO 45701

JOHN M. BRANNER  
Registered Land Surveyor

TELEPHONE  
(614) 592-5778

Situated in Section 1, T.5, R.13, Canaan Township, Athens County, Ohio and being more particularly described as follows:

Beginning at a point in Township Road 96, said point bears North 86 Degrees 30 Minutes West, 3281.53 feet from the South-east corner of Section 1, thence, along the south-line of said section, North 86 degrees 30 minutes 00 seconds West, a distance of 803.22 feet to an iron pin set in an old road bed, passing an iron pin set at 30.32 feet; thence, along the old road bed, North 17 degrees 34 minutes 42 seconds East, a distance of 418.44 feet to an iron pin set; thence, along the old road bed, North 16 degrees 45 minutes 22 seconds East, a distance of 185.75 feet; thence, leaving said old road bed, North 63 degrees 22 minutes 45 seconds West, a distance of 37.21 feet to an iron pin set in the existing Township Road 536; thence, along the existing Township Road 536, North 14 degrees 48 minutes 49 seconds East, a distance of 138.53 feet; thence North 2 degrees 06 minutes 00 seconds East, a distance of 310.67 feet; thence North 18 degrees 30 minutes 39 seconds East, a distance of 508.65 feet; thence North 36 degrees 46 minutes 51 seconds East, a distance of 211.67 feet; thence North 17 degrees 59 minutes 36 seconds East, a distance of 124.24 feet to a point in County Road 24; thence, along said road South 81 degrees 35 minutes 09 seconds East, a distance of 31.57 feet; thence, leaving said road, South 62 degrees 23 minutes 57 seconds East, a distance of 43.06 feet to an iron pin set; thence South 72 degrees 27 minutes 31 seconds East, a distance of 297.28 feet to an iron pin set; thence North 75 degrees 10 minutes 44 seconds East, a distance of 249.11 feet to an iron pin set; thence North 64 degrees 27 minutes 26 seconds East, a distance of 326.74 feet to a point in County Road 24, passing an iron pin set at 195.83 feet; thence, along County Road 224, North 77 degrees 00 minutes 00 seconds East, a distance of 417.81 feet; thence North 78 degrees 31 minutes 17 seconds East, a distance of 209.16 feet; thence North 84 degrees 42 minutes 53 seconds East, a distance of 110.35 feet; thence South 88 degrees 45 minutes 12 seconds East, a distance of 143.85 feet;

Drawn and checked for  
accuracy by  
DATE 11-27-96

*J. Blausen*



56

CAN #1

# BRANNER SURVEYING

MEMBER-PROFESSIONAL LAND SURVEYORS OF OHIO

12500 N. PEACH RIDGE ROAD  
ATHENS, OHIO 45701

JOHN M. BRANNER  
Registered Land Surveyor

TELEPHONE  
(614) 592-5778

thence South 86 degrees 17 minutes 58 seconds East, a distance of 36.39 feet;  
thence South 83 degrees 21 minutes 14 seconds East, a distance of 70.40 feet;  
thence South 72 degrees 39 minutes 13 seconds East, a distance of 79.06 feet;  
thence South 63 degrees 16 minutes 43 seconds East, a distance of 96.68 feet;  
thence South 59 degrees 16 minutes 55 seconds East, a distance of 58.83 feet;  
thence continuing Southeast along said line, a distance of 90.00 feet;  
thence South 56 degrees 52 minutes 04 seconds East, a distance of 82.55 feet;  
thence South 48 degrees 57 minutes 58 seconds East, a distance of 87.95 feet;  
thence South 39 degrees 30 minutes 45 seconds East, a distance of 106.16 feet;  
thence South 32 degrees 47 minutes 35 seconds East, a distance of 224.01 feet;  
thence South 31 degrees 59 minutes 20 seconds East, a distance of 194.48 feet;  
thence South 31 degrees 11 minutes 33 seconds East, a distance of 832.48 feet to a point in the North corner of a 2.282 acre tract;  
thence, leaving County Road 24 and along the line of the aforementioned 2.282 acre tract, South 50 degrees 42 minutes 01 second West, a distance of 656.69 feet to a point in Township Road 96, passing iron pins found at 21.00 feet and 586.82 feet;  
thence, along Township Road 96, South 87 degrees 14 minutes 59 seconds West, a distance of 149.81 feet;  
thence North 81 degrees 00 minutes 00 seconds West, a distance of 772.20 feet;  
thence North 87 degrees 45 minutes 00 seconds West, a distance of 691.02 feet;  
thence South 47 degrees 45 minutes 00 seconds West, a distance of 265.98 feet;  
thence South 66 degrees 30 minutes 00 seconds West, a distance of 304.92 feet;  
thence South 56 degrees 00 minutes 00 seconds West, a distance of 109.56 feet;  
thence South 44 degrees 39 minutes 22 seconds West, a distance of 69.41 feet to the POINT OF BEGINNING; said described tract containing 114.567 acres.

Subject to all easements and rights of way of record.

All iron pins set are 5\8 inch by 30 inch long rebar.

57



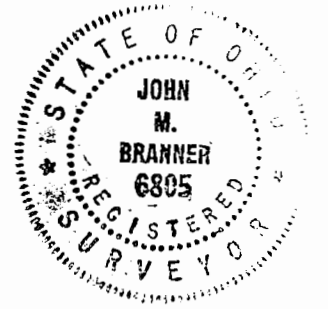
SCALE 1 INCH = 300 FEET  
 ○ = IRON PIN FOUND  
 ● = IRON PIN SET

LINE	BEARING	DISTANCE
L 1	N 16° 45' 22" E	185.75'
L 2	N 63° 22' 45" W	37.21'
L 3	N 14° 48' 49" E	138.53'
L 6	N 17° 59' 36" E	124.24'
L 7	S 81° 35' 09" E	31.57'
L 8	S 62° 23' 57" E	43.06'
L 9	N 84° 42' 53" E	110.35'
L 10	S 88° 45' 12" E	143.85'
L 11	S 86° 17' 58" E	36.39'
L 12	S 83° 21' 14" E	70.40'
L 13	S 72° 39' 13" E	79.06'
L 14	S 63° 16' 43" E	96.68'
L 15	S 59° 16' 55" E	58.83'
L 16	S 59° 16' 55" E	90.00'
L 17	S 56° 52' 04" E	82.55'
L 18	S 48° 57' 58" E	87.95'
L 19	S 39° 30' 45" E	106.16'
L 20	S 07° 14' 59" W	149.81'
L 21	S 56° 00' 00" W	109.56'
L 22	S 44° 39' 22" W	69.41'

114.57 ACRES SURVEYED

SURVEY OF A 114.57 ACRE TRACT IN T. 5, R. CANAAN TOWNSHIP, ATHENS COUNTY, OHIO SURVEYED NOVEMBER 1996

*John M. Branner*  
 JOHN M. BRANNER P.S. 8805  
 12500 N. PEACH RIDGE ROAD  
 ATHENS, OHIO 614-582-5778

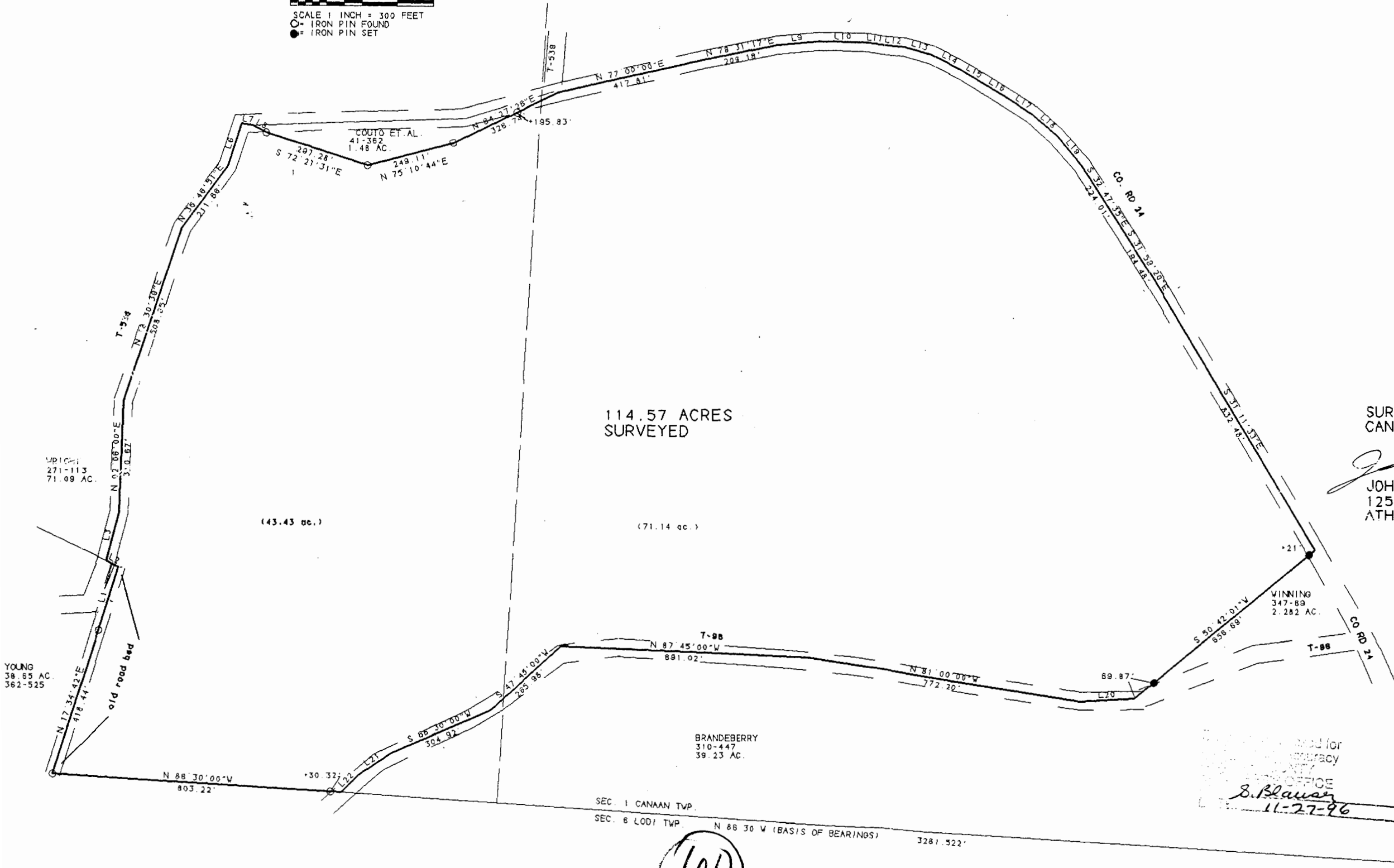


Noted for  
 Survey  
 Office  
*B. Blawie*  
 11-27-96

SEC. 1 CANAAN TWP.  
 SEC. 6 LODI TWP.  
 N 86° 30' W (BASIS OF BEARINGS) 3281.522'

(60)

(61)



S.E. COR.  
 SEC. 1