

**BRANNER SURVEYING**  
MEMBER-PROFESSIONAL LAND SURVEYORS OF OHIO

12500 N. PEACH RIDGE ROAD  
ATHENS, OHIO 45701

JOHN M. BRANNER  
Registered Land Surveyor

TELEPHONE  
(614) 592-5778

DESCRIPTION OF A 49.094 ACRE TRACT

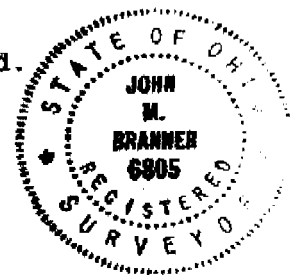
Situated in Section 1, T.5, R.13, Canaan Township, Athens County, Ohio and being more particularly described as follows:

Commencing at the South-east corner of Section , thence, North 03 Degrees 12 Minutes 35 Seconds East, 21.99 chains (deed) to an iron pin found at the Northerly most corner of a 39.23 acre tract (Vol. 310, Page 447) and being the POINT OF BEGINNING;

thence South 50 degrees 15 minutes 00 seconds West, a distance of 823.41 feet to a point in County Road 24 (an iron pin found bears South 50 Degrees 15 Minutes West, 21 feet;  
thence, along said road, North 31 degrees 33 minutes 53 seconds West, a distance of 832.48 feet;  
thence North 32 degrees 21 minutes 40 seconds West, a distance of 194.48 feet;  
thence North 33 degrees 09 minutes 55 seconds West, a distance of 224.01 feet;  
thence North 39 degrees 53 minutes 05 seconds West, a distance of 106.17 feet;  
thence North 49 degrees 20 minutes 18 seconds West, a distance of 87.95 feet;  
thence North 57 degrees 14 minutes 24 seconds West, a distance of 82.55 feet;  
thence North 59 degrees 35 minutes 15 seconds West, a distance of 148.83 feet;  
thence North 63 degrees 39 minutes 03 seconds West, a distance of 96.68 feet;  
thence North 73 degrees 01 minute 33 seconds West, a distance of 79.06 feet;  
thence North 83 degrees 43 minutes 34 seconds West, a distance of 70.40 feet;  
thence, along an existing fence line, North 8 degrees 05 minutes 23 seconds East, a distance of 433.04 feet to a hickory tree corner;  
thence South 88 degrees 34 minutes 46 seconds East, a distance of 1869.98 feet to a fence corner;  
thence, along the East-line of said section, South 3 degrees 12 minutes 35 seconds West, a distance of 1251.39 feet to the POINT OF BEGINNING; said described tract containing 49.094 acres.

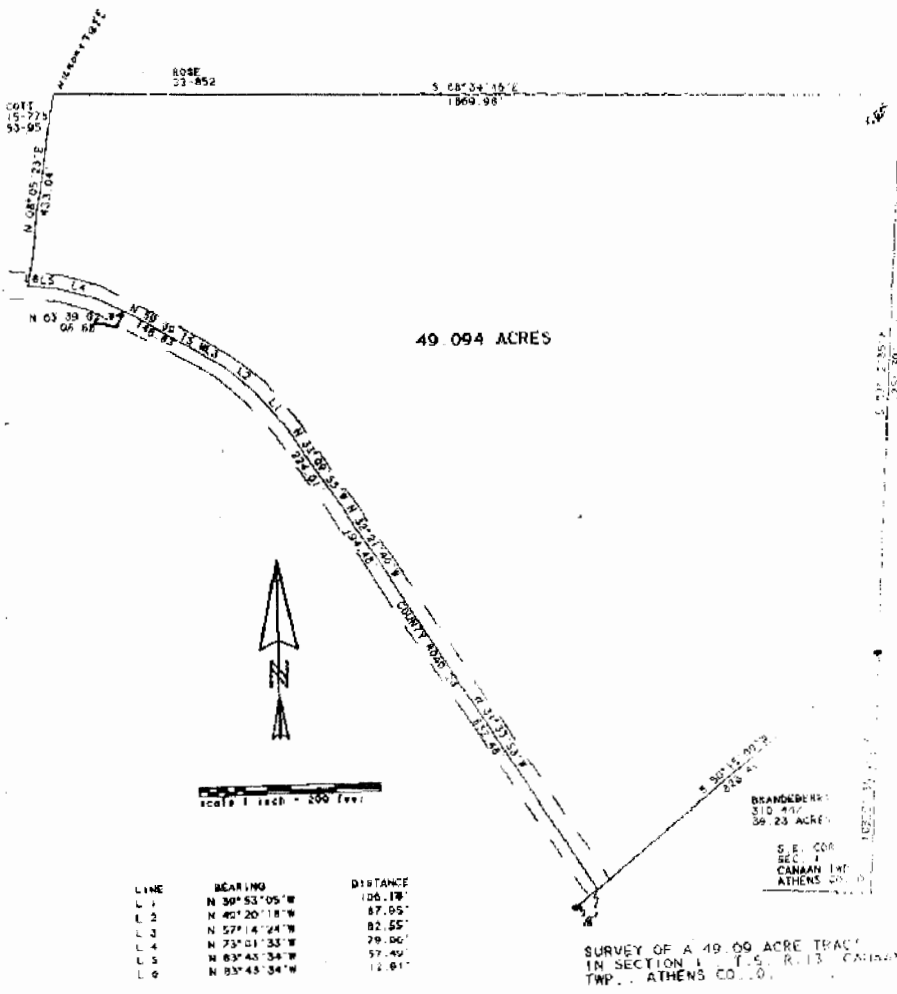
Subject to all easements and rights of way of record.

John M. Branner P.S. 6805



Description checked for  
Mathematical Accuracy  
ATHENS COUNTY  
ENGINEER'S OFFICE  
BY: S. Blausen  
DATE: 6-14-95

CAN#1



1/3