

BRANNER SURVEYING

MEMBER-PROFESSIONAL LAND SURVEYORS OF OHIO

12500 N. PEACH RIDGE ROAD
ATHENS, OHIO 45701

JOHN M. BRANNER
Registered Land Surveyor

TRACT "10"
DISCRIPTION OF A 5.073 ACRE TRACT

TELEPHONE
(614) 592-5778

Situated in Section 1, T. 5, R. 13, Canaan Township, Athens County, Ohio and being more particularly described as follows:

Commencing at a point in County road 24 bearing North 31 degrees 30 minutes 41 seconds West, a distance of 1946.03 feet from the South-east corner of Section 1, said point being the POINT OF BEGINNING;

thence, leaving said road, South 84 degrees 09 minutes 53 seconds West, a distance of 209.37 feet to an iron pin set, passing an iron pin set at 8.61 feet;

thence, South 72 degrees 40 minutes 45 seconds West, a distance of 174.99 feet to an iron pin set;

thence, South 9 degrees 02 minutes 26 seconds West, a distance of 186.16 feet to an iron pin set;

thence, North 83 degrees 11 minutes 21 seconds West, a distance of 333.58 feet to an iron pin set, passing an iron pin set at 253.58 feet;

thence, North 27 degrees 52 minutes 47 seconds East, a distance of 537.69 feet to an iron pin set;

thence, North 63 degrees 55 minutes 29 seconds East, a distance of 259.25 feet to a point in the aforementioned County road 24, passing an iron pin set at 244.82 feet;

thence, following said road, South 39 degrees 30 minutes 45 seconds East, a distance of 101.94 feet to a point;

thence, South 32 degrees 47 minutes 35 seconds East, a distance of 224.01 feet to a point;

thence, South 31 degrees 59 minutes 20 seconds East, a distance of 123.33 feet to the POINT OF BEGINNING and containing 5.073 acres.

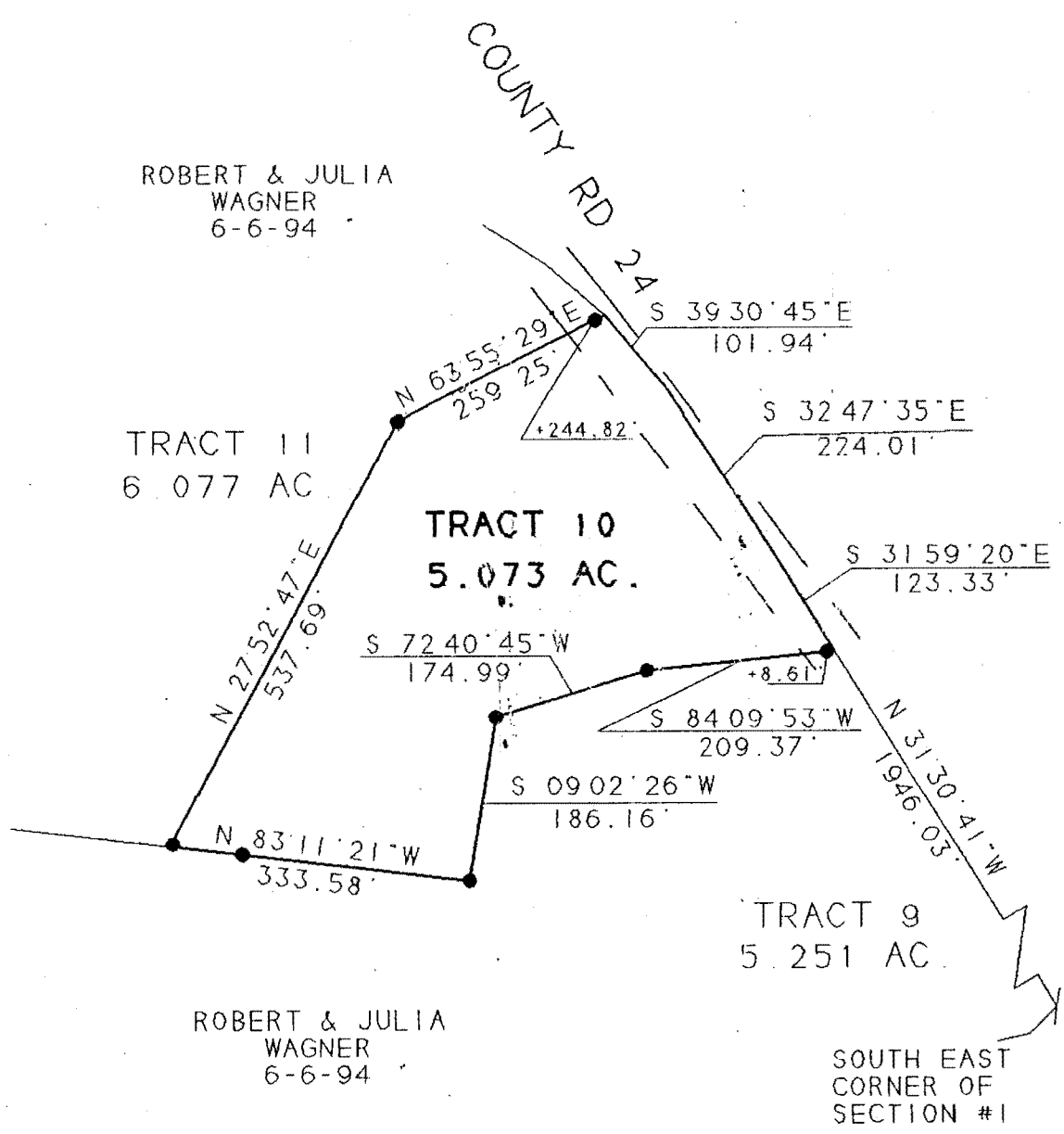
Subject to all easements and rights of way of record.
All iron pin set are 5/8 inch x 30 inch long rebar.

The above description is based on a field survey completed december 1996 by John M. Branner P.S. 6805

Surveyed and
found correct
and true
to the
original
S. Blanner
1-6-97

61

CAN#1



Surveyed by
 S. Blausen
 1-6-97



SCALE 1 INCH = 200 FEET
 ○ - IRON PIN FOUND
 ● - IRON PIN SET

BEARINGS SHOWN HEREON ARE BASED ON A SURVEY OF AN 114.57 ACRE TRACT AND ARE USED TO DONOTE ANGLES ONLY

SURVEY OF A 5.073 ACRE TRACT
 SEC. 1, T.5, R.13, CANAAN TWP.
 ATHENS COUNTY, OHIO
 SURVEYED DECEMBER 1996 &

JOHN M. BRANNER P.S. 6805
 12500 N. PEACH RIDGE ROAD
 ATHENS, OHIO 592-5778

62