

Description of 24.117 Acres

Description of a parcel of land situated in Section 11, Town 5, Range 13, Canaan Township, Athens County, Ohio and being more fully described as follows:

Beginning at an iron pin set at the southeast corner of Section 11;

Thence along the south line of said Section 11 and being a common line to (Houska 188-147 OR) and (Leatherwood 371-755) N83°38'19"W 824.38 feet to an iron pin set;

Thence along a common line to (McAfee 85-505) and (Leatherwood 371-755) N06°39'43"E (passing an iron pin set at 1261.63) for a total distance of 1286.05 to a point in the center of Township Road 224;

Thence along the center of said road and over the lands of (Leatherwood 371-755) the following eight courses S67°12'30"E 210.97 feet to a point;

Thence S76°31'50"E 116.42 feet to a point;

Thence N85°32'57"E 167.46 feet to a point;

Thence N80°04'29"E 55.55 feet to a point;

Thence N72°19'27"E 79.98 feet to a point;

Thence N62°30'13"E 153.61 feet to a point;

Thence N66°24'18"E 65.85 feet to a point;

Thence N73°35'11"E 34.44 feet to a point;

Thence leaving said road along the east line of said Section 11 and being a common line to (Johnson 241-329) and (Leatherwood 371-755) S06°39'43"W (passing an iron pin set at 36.29 feet) for a total distance of 1423.33 feet to the point and place of beginning containing 24.117 acres.

Subject to all easements, rights-of-way, covenants and agreements of record.

Prior Deed Volume 371, Page 755 Athens County Recorder's Office.

Iron pins set are 5/8" x 30" rebar capped "NEWMAN8043"

Auditor's Tax Number E010010003800

~~Charles T. Newman~~
Charles T. Newman
Professional Surveyor 8043
66 Elmwood Place
Athens, Ohio 45701
April 2, 2012



Description Approved
J. A. Thompson
Athens County Auditor

Description Checked for
Mathematical Accuracy
Athens County
ENGINEER'S OFFICE
BY: S. Blausen
DATE: 4-4-12

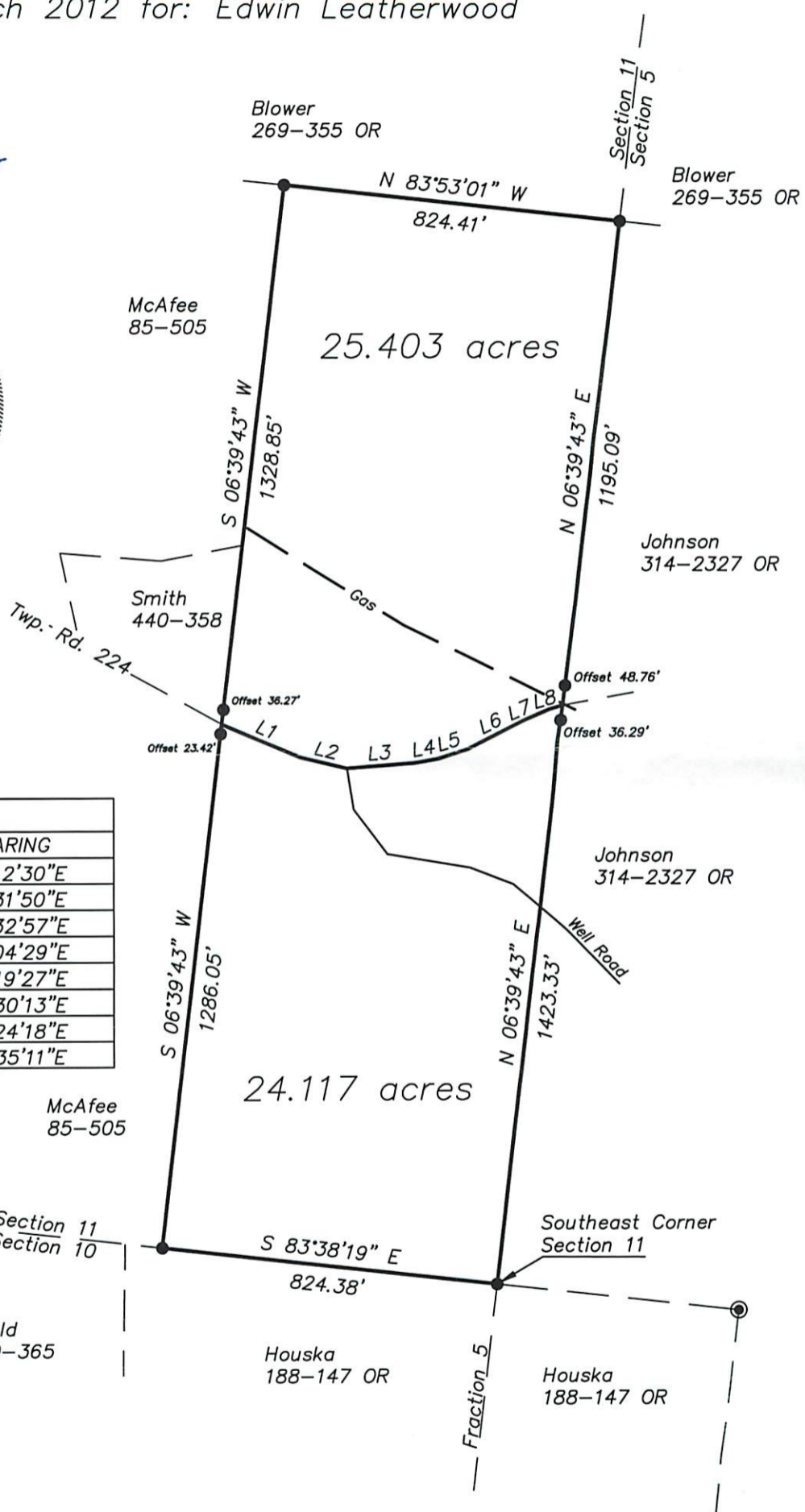
C. TIM NEWMAN
Professional Surveyor

66 Elmwood Place
Athens, Ohio 45701

740-594-1884
FAX 740-594-9413

Plat of Survey of 25.403 acres and 24.117 acres
situated in Section 11, Town 5, Range 13,
Canaan Township, Athens County, Ohio.
Deed Reference: 371-755
Surveyed March 2012 for: Edwin Leatherwood

Charles T. Newman
Charles T. Newman



LINE TABLE		
LINE	LENGTH	BEARING
L1	210.97	S67°12'30"E
L2	116.42	S76°31'50"E
L3	167.46	N85°32'57"E
L4	55.55	N80°04'29"E
L5	79.98	N72°19'27"E
L6	153.61	N62°30'13"E
L7	65.85	N66°24'18"E
L8	34.44	N73°35'11"E

- ⊙ Iron Pin Found
- Iron Pin Set
- Stone Found

GRAPHIC SCALE



(IN FEET)
1 inch = 400 ft.

Description Checked for
Mathematical Accuracy
Athens County
ENGINEER'S OFFICE
BY: *S. Blouse*
DATE: *4-4-13*