

BY: Robert Williams
DATE: 7/28/17

DESCRIPTION OF A 5.00 ACRE TRACT

Situated in Section 13, T.5, R.13, Canaan Township, Athens County, Ohio and being more particularly described as follows:

Beginning at a point in the North-east corner of the Adleta 7.442 acre tract (396- 942 O.R.), said point calculated to bear South 79 degrees 32 minutes 45 seconds West, 3162.97 feet from the North -east corner of Section 13;

Thence, along the north-line of Adleta (396-942 O.R.)

S 82° 27' 03"W, 353.84 feet to an iron pin set, passing an iron pin found at 29.53 feet;

Thence along new lines created by this survey:

N 2° 57' 09"E, 575.16 feet to a point in Rocky Point Road, passing an iron pin set at 545.16 feet;

Thence, along said road:

N 72° 23' 32"E, 147.06 feet;

N 65° 01' 24"E, 247.53 feet to a point in the West-line of Graham (69-106 O.R.)

Thence, with the West-line of Graham (69-106 O.R.)

S 3° 40' 08"W, 678.30 feet to the point of beginning and containing 5.00 acres.

Subject to all easements and rights of way of record.

Iron pins set are 5/8 inch by 30 inch long rebar w/ plastic I.D. Cap stamped Branner P.S. 6805

Bearing : Grid North- N.A.D. 83

The above description is based on a field survey completed July 2017 by
John M. Branner P.S. 6805



Legal Description Pre-Approval
APPROVED
All transfers are subject to
Athens County Conveyance Standards

JUL 28 2017

Jill Thompson
Athens County Auditor



5.00 Acres

GRAHAM
KATHRYN M
69-106 O.R.

DELAVAL
JEFFREY PHIPPS
158-917 O.R.

ADLETA DON E
396-942 O.R.

P.O.B. calculated to bear
S 79° 32' 45" W 3162.97'
N.E. cor. of Sec. 13

Description Checked for
Mathematical Accuracy
Athens County
ENGINEER'S OFFICE
BY: Brandon Utterlin
DATE: 7/28/17

**Survey of a 5.00 Acre Tract
Situated in Section 13, T. 5, R.13,
Canaan Twp., Athens Co., Ohio
Surveyed July 2017**

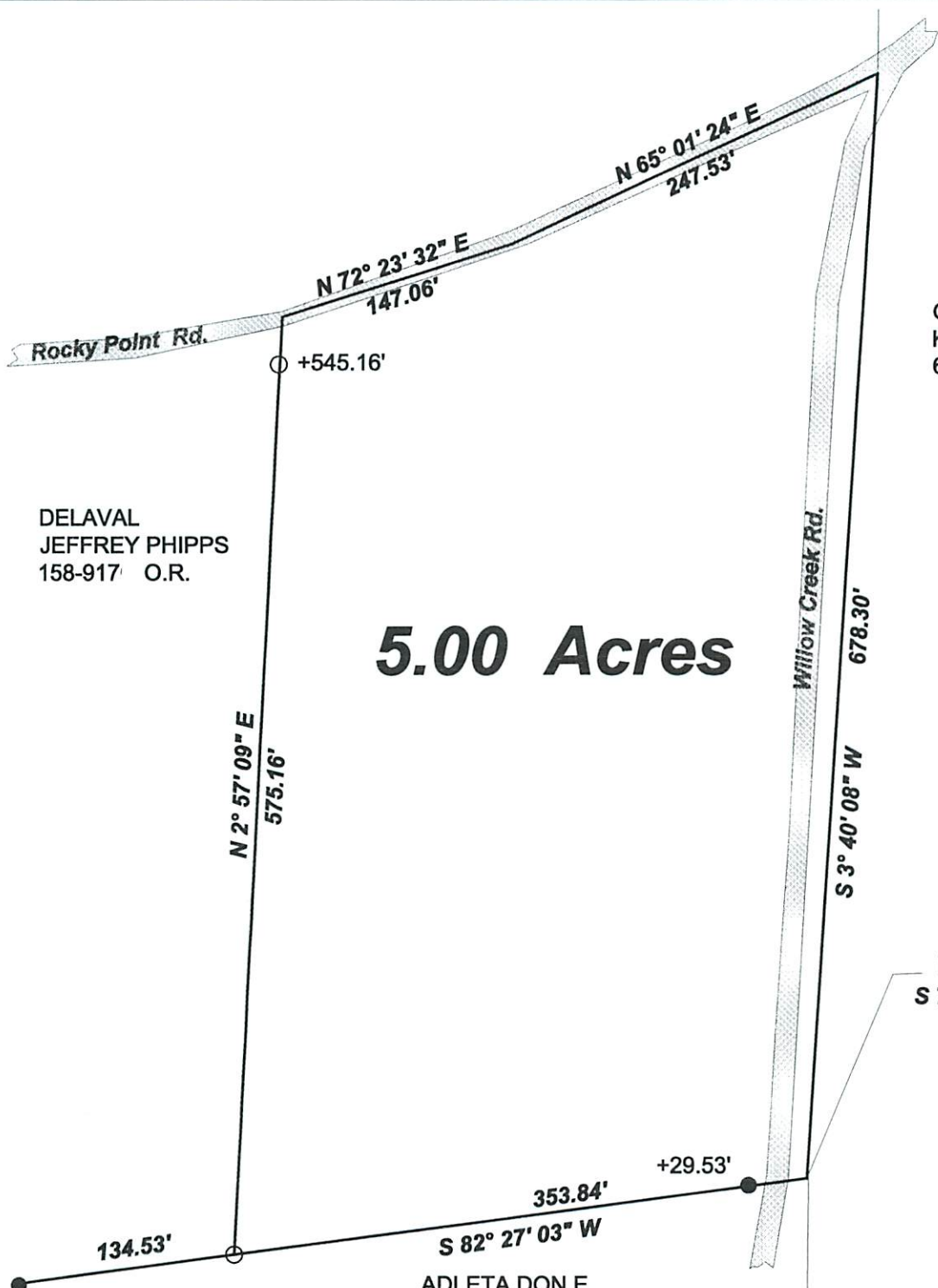
By: John M. Branner
**John M. Branner P.S. 6805
P.O.Box 274, The Plains, Oh
The Plains, Ohio 45780**

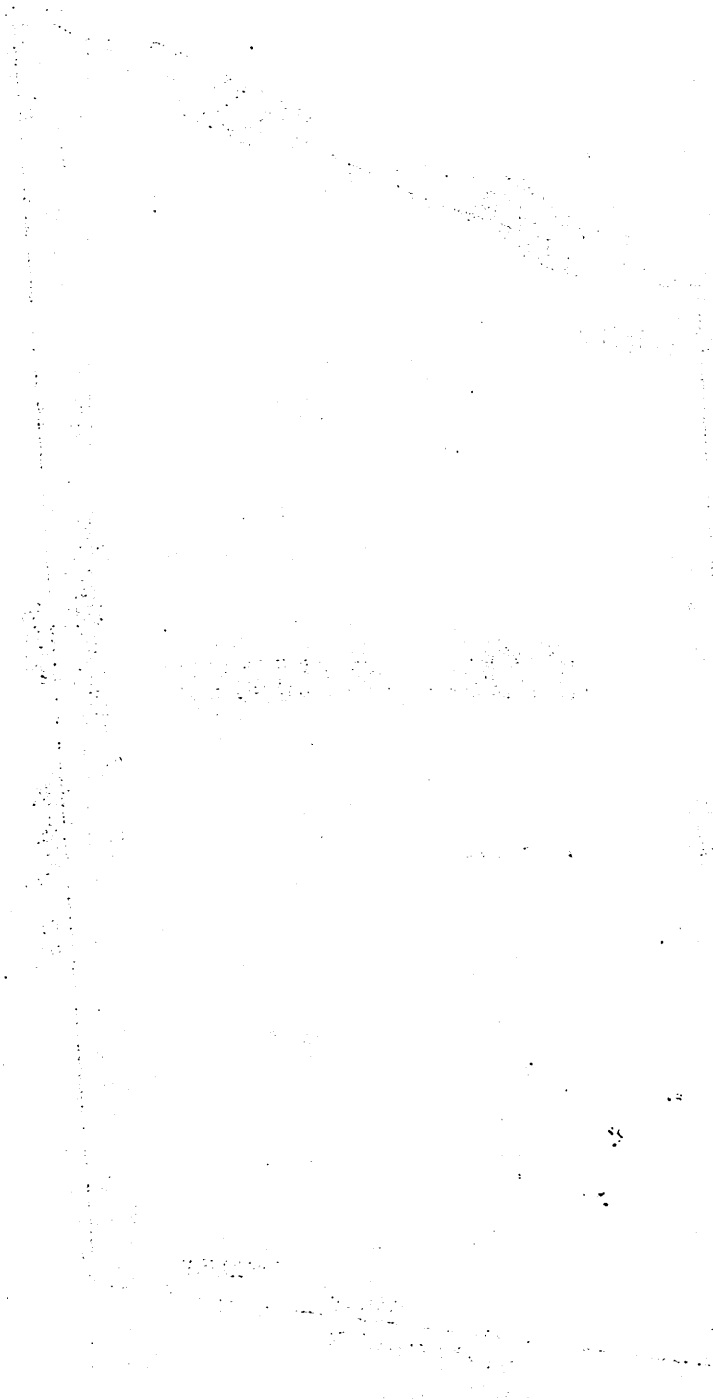


Scale 1 inch = 100 feet

- = iron pin set 5/8"x30" rebar w/ plastic I.D. Cap
- = iron pin found

Bearings: N.A.D. 83 Grid North - Ohio South Zone
Ref. Docs.: Tax Plat, Deeds, Surveys





1944
 1945
 1946

1947
 1948
 1949

1950
 1951
 1952

1953
 1954
 1955

1956
 1957
 1958

1959
 1960
 1961

1962
 1963
 1964

1965
 1966
 1967
 1968
 1969
 1970

1971
 1972
 1973
 1974
 1975

1976
 1977
 1978

1979
 1980
 1981

1982
 1983
 1984

1985
 1986
 1987

1988
 1989
 1990