

DESCRIPTION OF A 5.010 ACRE TRACT

Situated in Section 19, Canaan Township and Section 24 of Lodi Township, Athens County, Ohio and being more particularly described as follows:

Beginning at an iron pin set that bears South 30 feet and West, 130 feet from the North-east corner of Section 24, Lodi Township,  
thence South 49 degrees 23 minutes 59 seconds West, a distance of 459.99 feet;  
thence North 27 degrees 54 minutes 31 seconds West, a distance of 626.85 feet;  
thence South 87 degrees 51 minutes 15 seconds East, a distance of 140.10 feet;  
thence North 66 degrees 48 minutes 49 seconds East, a distance of 91.15 feet;  
thence North 42 degrees 23 minutes 25 seconds East, a distance of 56.26 feet;  
thence North 26 degrees 48 minutes 34 seconds East, a distance of 114.36 feet;  
thence South 37 degrees 31 minutes 30 seconds East, a distance of 540.74 feet to the POINT OF BEGINNING; said described tract containing 5.010 acres.

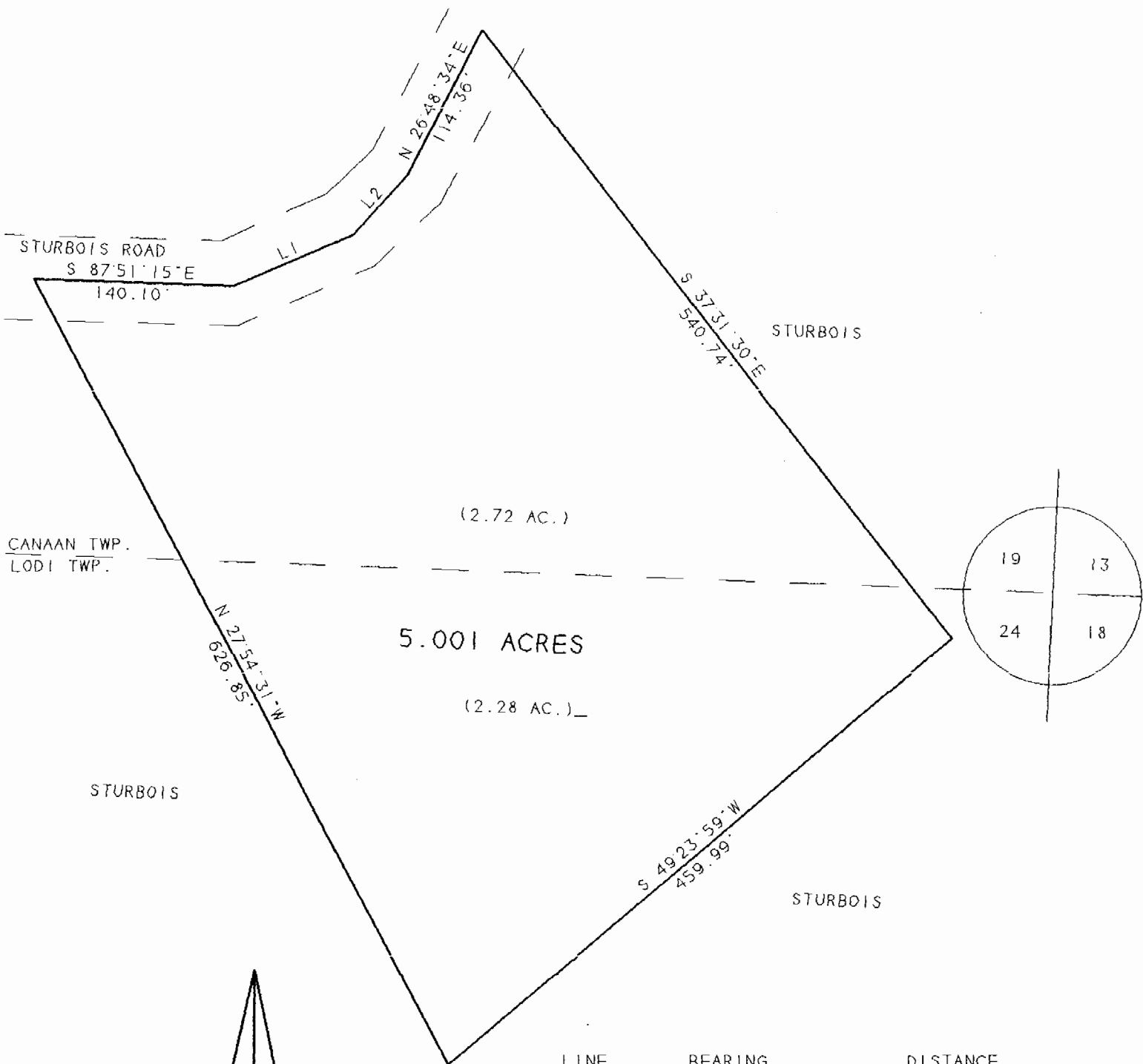
Subject to all easements and rights of way of record.

John M. Branner P.S. 6805

Description checked for  
Mathematical Accuracy  
ATHENS COUNTY  
ENGINEER'S OFFICE  
BY: S. Blawie  
DATE: 8-14-96

183

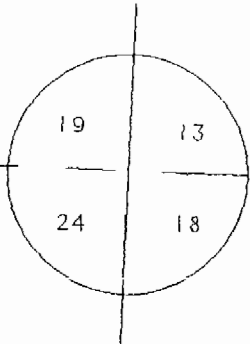
CAU#19



5.001 ACRES

(2.72 AC.)

(2.28 AC.)



LINE	BEARING	DISTANCE
L 1	N 66°48'49"E	91.15'
L 2	N 42°23'25"E	56.26'

SURVEY OF A 5.001 ACRE TRACT  
 IN SECTION 19, LODI TWP AND  
 SEC. 24 OF CANAAN TWP., ATHENS CO., O.  
 SURVEYED JULY 1996

JOHN M. BRANNER P.S. 6805  
 12500 N. PEACH RIDGE ROAD  
 ATHENS, OHIO 614-592-5778

1 INCH = 100 FEET  
 = IRON PIN SET  
 = R.R.S. SET

184