



ROBINSON SURVEYING

MEMBER-PROFESSIONAL LAND SURVEYORS OF OHIO
12355 LIARS CORNER ROAD, MILLFIELD, OHIO 45761

ALAN D. ROBINSON
Registered Land Surveyor

TELEPHONE
(740) 593-8774

TRACT "A" DESCRIPTION OF A 3.864 ACRE TRACT

Situated in Fractions, 34 and 35, Section 28, Town 5, Range 13, Canaan Township, Athens County, Ohio, and being a part of a 17.21 acre tract and a part of a 0.93 Acre Tract described in Volume 217 Page 683 Official Records of Athens County more particularly described as follows:

Commencing at the Northwest corner of Section 28;
 thence, following the West line of said Section 28 on a calculated Bearing and distance, South 3 degrees 32 minutes 28 seconds West, a distance of 1725.32 feet to an iron pin set, passing an iron pin found at 1161.48 feet;
 thence, South 3 degrees 32 minutes 28 seconds West along said line, a distance of 328.95 feet to an iron pin set;
 thence, South 3 degrees 32 minutes 28 seconds West along said line, a distance of 343.18 feet an iron pin set;
 thence, South 3 degrees 32 minutes 28 seconds West along said line, a distance of 121.54 feet a point in East State Street, passing a disturbed iron pin at 29.40 feet and an iron pin set at 66.05 feet;
 thence, following said East State Street, South 89 degrees 56 minutes 14 seconds East, a distance of 321.90 feet to a point, said point being the POINT OF BEGINNING of the following described tract;
 thence, leaving said Street on a random line, North 47 degrees 22 minutes 37 seconds East, a distance of 693.95 feet to an iron pin set in the west line of Hope Drive 50 feet Right-of-way;
 thence, following said Right-of-way, South 38 degrees 44 minutes 38 seconds East, a distance of 266.40 feet to an iron pin set, said iron pin set being the point of curvature of a tangent curve, concave to the southwest, having a radius of 135.00 feet, a central angle of 28 degrees 54 minutes 40 seconds, and a chord of 67.40 feet bearing South 24 degrees 17 minutes 40 seconds East;
 thence southeast along said curve, a distance of 68.12 feet to an iron pin set;
 thence South 9 degrees 50 minutes 21 seconds East, a distance of 112.39 feet to a point;
 thence, leaving said Right-of-way, South 73 degrees 47 minutes 20 seconds West, a distance of 6.14 feet to a point;
 thence South 12 degrees 02 minutes 45 seconds East, a distance of 22.67 feet to a point;
 thence North 77 degrees 08 minutes 54 seconds East, a distance of 5.23 feet to a point in the aforementioned West line of Hope Drive 50 feet Right-of-way;
 thence, following said Right-of-way, South 9 degrees 50 minutes 21 seconds East, a distance of 69.12 feet to a point in the aforementioned East State Street;
 thence, leaving said Hope Drive and following said East State Street, North 89 degrees 57 minutes 08 seconds West, a distance of 30.86 feet to a point;
 thence, leaving said East State Street, North 18 degrees 10 minutes 41 seconds West, a distance of 220.72 feet to a 1/2 inch pipe found, passing an iron pin set at 25.27 feet;
 thence South 89 degrees 53 minutes 11 seconds West, a distance of 109.57 feet to a 2 inch pipe found;
 thence South 18 degrees 11 minutes 31 seconds East, a distance of 220.33 feet to a point in the aforementioned East State Street, passing an iron pin set at 195.06 feet;
 thence, following said East State Street, North 89 degrees 56 minutes 14 seconds West, a distance of 599.53 feet to the POINT OF BEGINNING; said described tract containing 3.864 acres (168,315.6599 square feet), 0.487 acres being out of the aforementioned 0.93 acre tract and 3.377 acres being out of the aforementioned 17.21 acre tract, 1.474 acres being in Fraction 35 and 2.390 acres being in Fraction 34.

Bearings are based on prior Surveys and are used to denote angles only.
Subject to all easements and right-of-way of record.

All iron pins set are 5/8 inch by 30-inch long rebar with a yellow cap stamped Alan Robinson RLS 8049.

Alan D. Robinson P.S. 8049 bases the above description on a field Survey completed February 28, 2001,

Alan D. Robinson

Description checked for
 Mathematical Accuracy
 ATHENS COUNTY
 ENGINEER'S OFFICE
 BY: *S. Blauer*
 DATE: *2-28-01*



CAN# 28

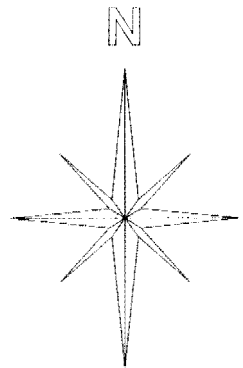
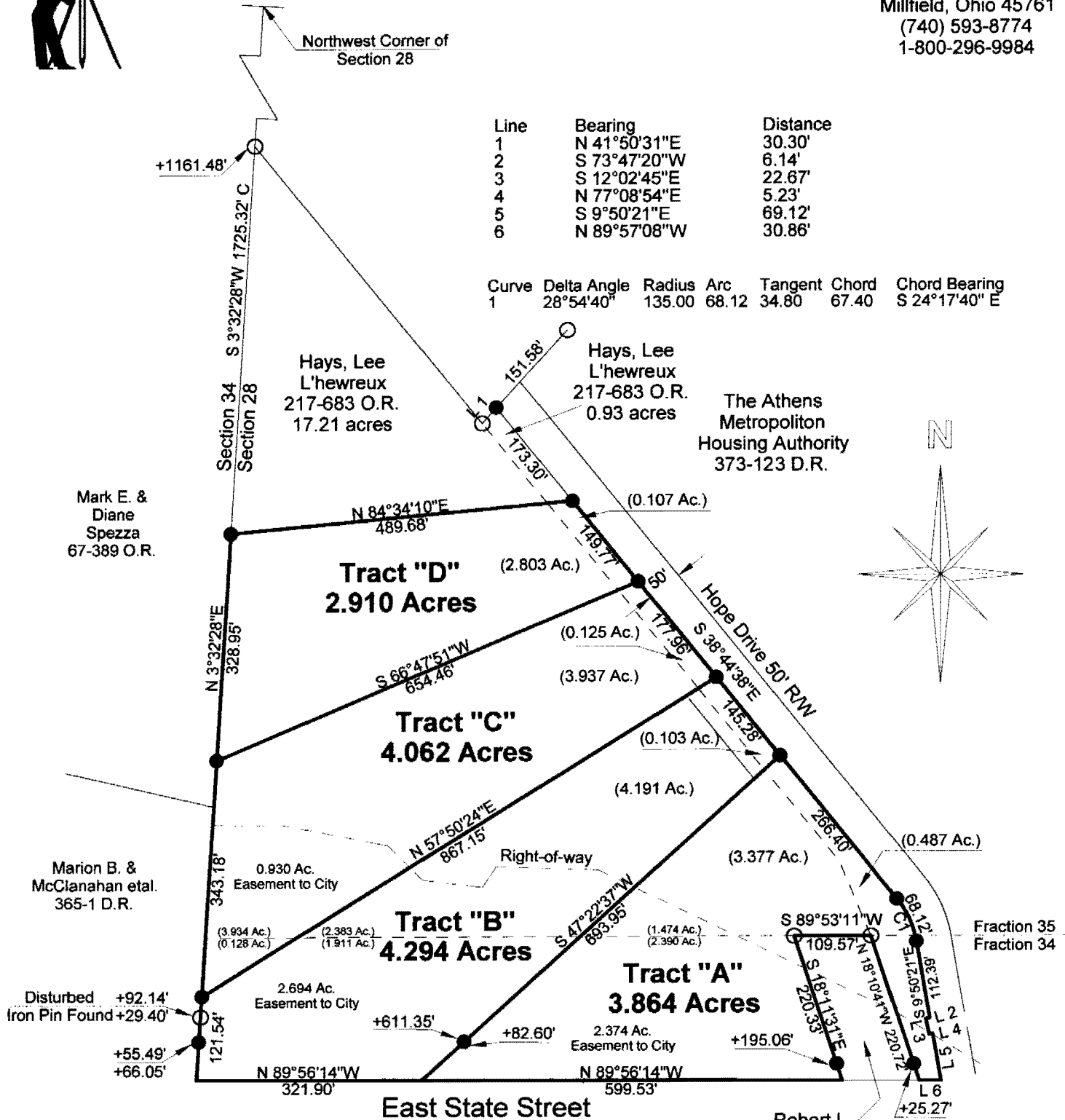


ROBINSON SURVEYING

12355 Liars Corner Rd.
Millfield, Ohio 45761
(740) 593-8774
1-800-296-9984

Line	Bearing	Distance
1	N 41°50'31"E	30.30'
2	S 73°47'20"W	6.14'
3	S 12°02'45"E	22.67'
4	N 77°08'54"E	5.23'
5	S 9°50'21"E	69.12'
6	N 89°57'08"W	30.86'

Curve	Delta Angle	Radius	Arc	Tangent	Chord	Chord Bearing
1	28°54'40"	135.00	68.12	34.80	67.40	S 24°17'40" E

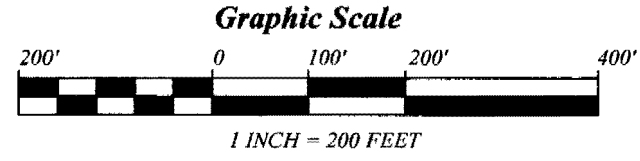


- = Iron Pin Set W/A Yellow Cap Stamped Alan Robinson RLS 8049
- = Iron Pin Found
- △ = Rail Road Spike Set
- ▲ = Rail Road Spike found
- ☒ = Stone Found
- M = Measured
- D = Deed
- C = Calculated

BEARING REFERENCE
BASED ON PREVIOUS SURVEYS AND ARE USED TO DENOTE ANGLES ONLY

References
Deeds as Noted
Previous Surveys
Current Tax Plats
Existing Monumentation
Old Route 50 Right-of-way Plans

Description checked for Mathematical Accuracy
ATHENS COUNTY ENGINEER'S OFFICE
BY: *S. Blausen*
DATE: *2-28-01*



Plat of Survey of 4 Tracts
 Surveyed for: J. B. Hays Date 02/28/2001
 City of Athens, Fractions 34 & 35
 Section 28, Town 5, Range 13, Canaan Township
 Athens County, State of Ohio
 Alan D. Robinson Registered Professional Land Surveyor No. 8049

