



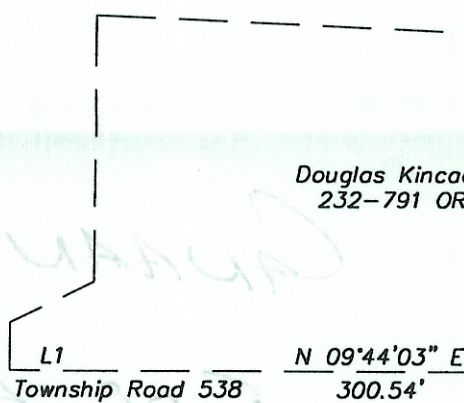
Tawn V. Jutton
etal
75-308 OR

Tawn V. Jutton
etal
75-308 OR

- △ = Railroad Spike Found
- ▲ = Railroad Spike Set
- ⊙ = Iron Pin Found
- = Iron Pin Set
- = Stone Found
- ⊗ = Monument Found

217,800 sq. ft.
5.000 acres

| LINE TABLE | | |
|------------|-------------|--------|
| LINE | BEARING | LENGTH |
| L1 | N10°11'51"E | 43.91' |



Douglas Kincade
232-791 OR

Charles E &
Joyse A. Kincade
310-209

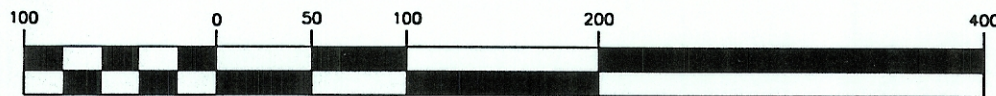
Plat of Survey of 5.000 Acres
Situating in Section 1, Town5,
Range 13, Canaan Township,
Athens County, Ohio
Surveyed June 2001 for:
Tawn V. Jutton

John Franklin Rose
22-852 OR

Charles E. Kincade
63-555 OR

Description checked for
Mathematical Accuracy
ATHENS COUNTY
ENGINEER'S OFFICE
BY: *S. Blausen*
DATE: 6-18-01

Gregory K. Wright
Gregory K. Wright



(IN FEET)
1 inch = 100 ft.



Gregory K. Wright
Professional Engineer
Professional Surveyor

11684 Channingway Blvd
The Plains, Ohio 45780
740-797-4142
FAX 740-797-8623