

DESCRIPTION OF  
6.665 ACRES

Description of a parcel of land situated in Sections 25 and 31, Town 5, Range 13, Canaan Township, Athens County, Ohio.

Said parcel being more fully described as follows:

Commencing at the Northwest Corner of Section 25;  
Thence S 04°10'15"W 1282.31 feet to a railroad spike found in the center of County Road 25  
being the **POINT OF BEGINNING** of the tract herein described;

Thence along said Road the following five courses S 54°03'31"E 78.63 feet to a point;

Thence S63°01'34"E 170.01 feet to a point;

Thence S50°13'18"E 177.28 feet to a point;

Thence S43°36'32"E 270.18 feet to a point;

Thence S34°44'18"E 141.91 feet to a Railroad Spike set;

Thence leaving Said Road and following the top of a Rock Face the following seven courses, and  
being common lines of (Limoli 361-719 OR) and (Wilson 282-438 OR)  
N71°26'29"W 79.27 feet to a point;

Thence N64°26'15"W 150.68 feet to a point;

Thence N65°40'54"W 95.68 feet to a point;

Thence N76°44'37"W 82.40 feet to a point;

Thence N67°52'15"W 174.06 feet to a point;

Thence N58°06'30"W 321.31 feet to a point;

Thence N40°43'31"W 242.43 feet to a Stone Found;

Thence along common lines of (Durfee 157-391 OR) and (Wilson 282-438 OR)  
The following seven courses,  
N52°55'54"E 16.50 feet to a point in a Ravine;

Thence following the ravine N34°41'15"W 78.54 feet to a point;

Thence N46°16'13"W 265.47 feet to a point;

Thence N11°20'23"W 145.46 feet to a point;

Thence N15°20'59"W 86.56 feet to a point;

Thence N06°32'30"W 133.25 feet to a point;

Thence N26°51'31"E 54.62 feet to a Railroad Spike set in the center of County Road 25;

Thence following Said Road the following four courses,  
S19°02'17"E 218.41 feet to a point;

Thence S40°31'14"E 159.13 feet to a point;

Thence S51°57'42"E 323.01 feet to a point;

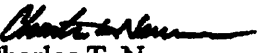
Thence S50°07'02"E 245.52 feet to the Point of Beginning containing 6.665 acres, of which  
3.819 lies in Section 25 and 2.846 lies in Section 31.

Prior Deed Reference Volume 282, Pages 0438-0440, Official Records of Athens County.

Iron pins set are 5/8"x30" rebar capped "NEWMAN PS-8043"

Subject to all easements, rights-of-way, covenants and agreements of record.

Tax Parcel Numbers for Section 25, E020020003300 and Section 31, E020020003900

  
Charles T. Newman  
Registered Professional Surveyor  
66 Elmwood Place  
Athens, OH 45701

August 23, 2010



Description Checked for  
Mathematical Accuracy  
Athens County  
ENGINEER'S OFFICE  
BY: S. Blause  
DATE: 8-27-10



C. Tim Newman  
Professional Surveyor

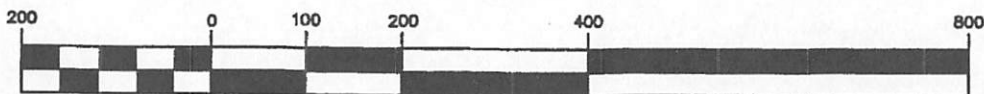
66 Elmwood Place  
Athens, Ohio 45701

740-594-1884



- ▲ Railroad Spike Found
- ▲ Railroad Spike Set
- Iron Pin Found
- Iron Pin Set
- Stone Found

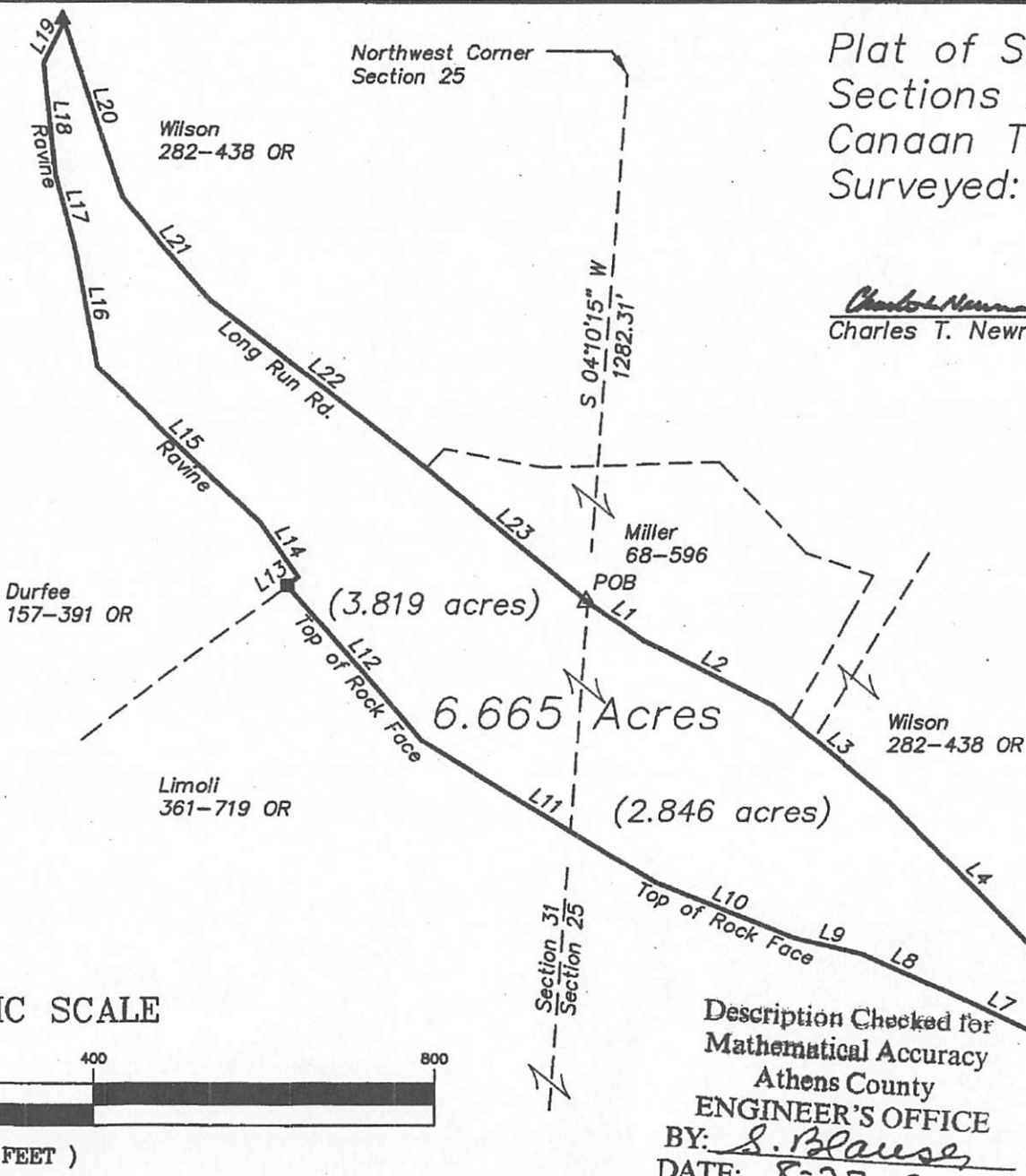
GRAPHIC SCALE



( IN FEET )

1 inch = 200 ft.

Land Projects\Limoli\dwg\Limoli.dwg, 8/25/2010 5:31:23 PM



Plat of Survey of 6.665 Acres situated in  
Sections 25 and 31, Town 5, Range 13,  
Canaan Township, Athens County, Ohio  
Surveyed: August 2010

Charles T. Newman  
Charles T. Newman



LINE TABLE		
LINE	LENGTH	BEARING
L1	78.63	S54°03'31"E
L2	170.01	S63°01'34"E
L3	177.28	S50°13'18"E
L4	270.18	S43°36'32"E
L5	141.91	S34°44'18"E
L6	79.27	N71°26'29"W
L7	150.68	N64°26'15"W
L8	95.68	N65°40'54"W
L9	82.40	N76°44'37"W
L10	174.06	N67°52'15"W
L11	321.31	N58°06'30"W
L12	242.43	N40°43'31"W
L13	16.50	N52°55'54"E
L14	78.54	N34°41'15"W
L15	265.47	N46°16'13"W
L16	145.46	N11°20'23"W
L17	86.56	N15°20'59"W
L18	133.25	N06°32'30"W
L19	54.62	N26°51'31"E
L20	218.41	S19°02'17"E
L21	159.13	S40°31'14"E
L22	323.01	S51°57'42"E
L23	245.52	S50°07'02"E

Description Checked for  
Mathematical Accuracy  
Athens County  
ENGINEER'S OFFICE  
BY: S. Blause  
DATE: 8-27-10