

Hayes  
334-223 OR  
Description Checked for  
Mathematical Accuracy  
Athens County  
ENGINEER'S OFFICE  
BY: S. Blausen  
DATE: 6-27-05



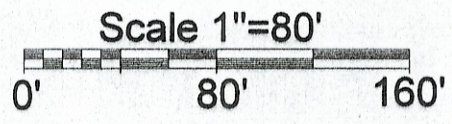
POB bears S 64°01'01"W,  
4002.45' from the N.E. corner  
of Section 34 (calculated).

POB bears S 63°36'39"W,  
3960.98' from the N.E. corner  
of Section 34 (calculated).

Line	Bearing	Distance
20	N 81°57'06"W	81.69'
21	N 70°31'44"W	78.76'
22	S 77°06'24"E	128.55'
23	S 83°29'48"E	17.77'
24	N 81°57'06"W	103.50'
25	N 81°57'06"W	85.14'
26	N 81°57'06"W	50.16'

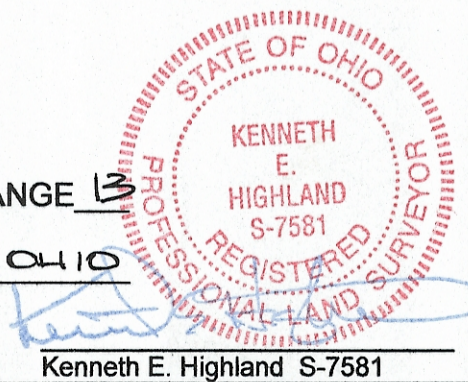
East State St.

O = Iron Pin Set  
● = Iron Pin Found



PLAT OF SURVEY OF 2 TRACTS  
 SURVEYED FOR BRETT HAYES  
 SUBDIVISION —  
 TOWNSHIP CANAAN SECTION 34 TOWN 5 RANGE 13  
 CORPORATION ATHENS COUNTY ATHENS STATE OHIO  
 SCALE 1"= 80' DATE JUNE 2005

Kenneth E. Highland  
80 Fayette St.  
Nelsonville, Ohio 45764  
740-753-1264



Kenneth E. Highland S-7581