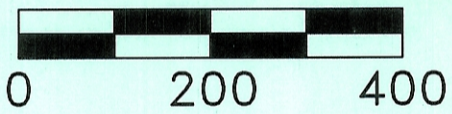


BEING A PART OF A 343.15 ACRE TRACT,
 OR4-263 AND DV308-833, IN THE NORTHEAST
 QUARTER OF SECTION 6, T5N, R13W, CANAAN
 TOWNSHIP, ATHENS COUNTY, STATE OF OHIO.

THIS SURVEY WAS BASED ON INFORMATION TAKEN
 FROM DEEDS, TAX MAPS, AERIAL PHOTOS AND
 EXISTING MONUMENTATION FOUND.

LEGEND

- ✱ P.K. Nail Set
- 5/8" x 30" Rebar Set With
 1 1/2" Plastic I.D. Cap Stamped "JRC
 7486"
- ⊙ Corner Post Found



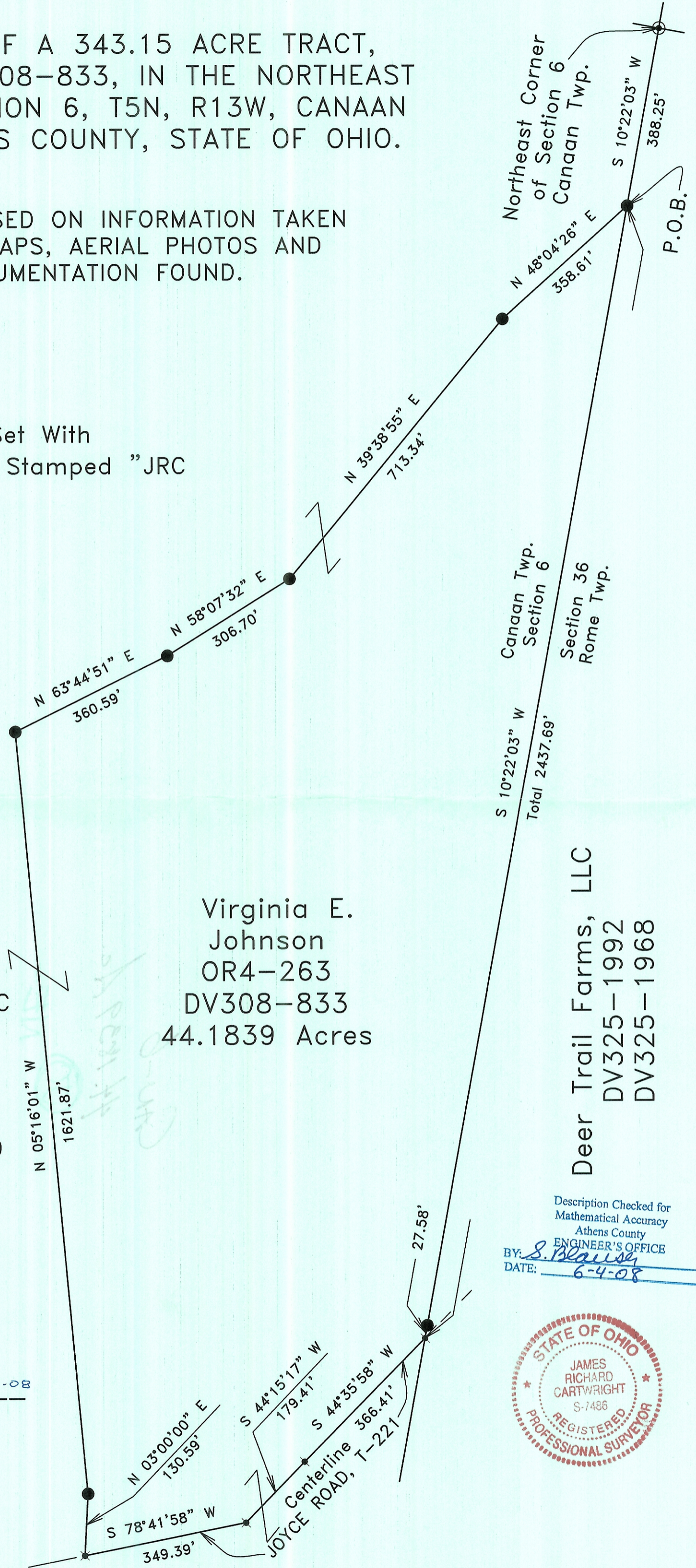
SCALE:
 1" = 200'

BASIS OF BEARINGS:
 FEBRUARY 08 MAGNETIC

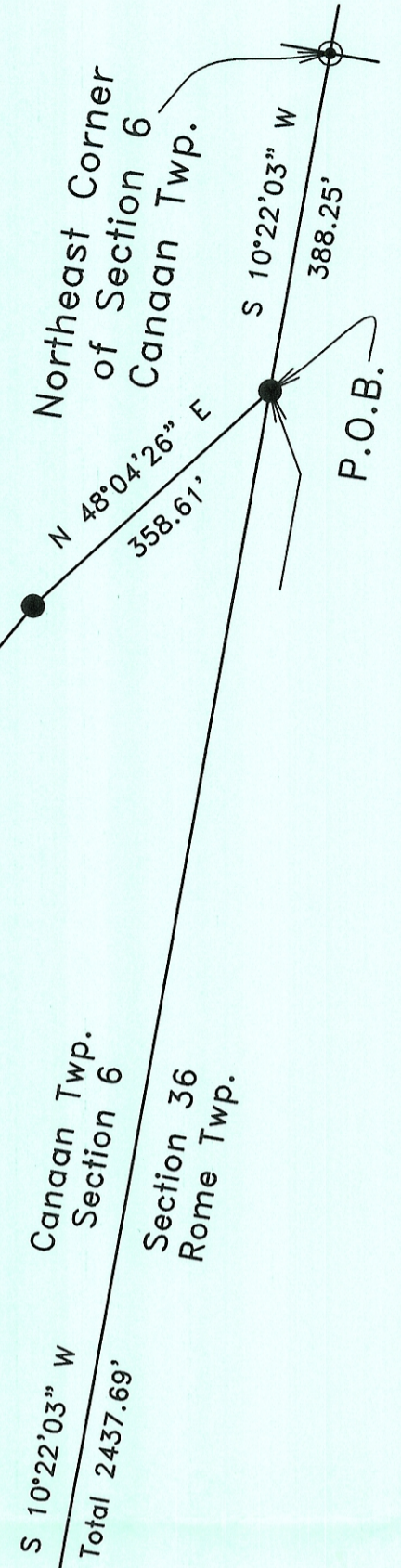
PLAT SHOWING
 SURVEY OF A 44.1839
 ACRE TRACT FOR
 KRIS JOHNSON

JAMES R. CARTWRIGHT
 OHIO PROFESSIONAL
 SURVEYOR #7486

James R. Cartwright 2-26-08



Virginia E.
 Johnson
 OR4-263
 DV308-833
 44.1839 Acres



Deer Trail Farms, LLC
 DV325-1992
 DV325-1968

Description Checked for
 Mathematical Accuracy
 Athens County
 ENGINEER'S OFFICE
 BY: *S. Blausy*
 DATE: 6-4-08

