

BRANNER SURVEYING
12500 N. PEACH RIDGE ROAD
ATHENS, OHIO 614-592-5778

Situated in Fraction 34, Section 28, T.5, R.12, Carthage Township, Athens County, Ohio and being more particularly described as follows:

Beginning at an iron pin set at a fence corner at the South-east corner of Fraction 34,

thence, along an existing fence-line, North 10 degrees 00 minutes 49 seconds East, a distance of 1039.90 feet to a corner tree;
thence, along an existing fence-line, North 80 degrees 18 minutes 42 seconds West, a distance of 1934.56 feet to an iron pin set in an existing fence-line;

thence, along an existing fence-line South 41 degrees 32 minutes 01 second East, a distance of 165.16 feet to an iron pin set;
thence, along an existing fence-line South 34 degrees 41 minutes 28 seconds West, a distance of 238.13 feet to an iron pin set;
thence, along an existing fence-line South 74 degrees 34 minutes 31 seconds West, a distance of 123.31 feet to an iron pin set;
thence, along an existing fence-line, South 55 degrees 04 minutes 16 seconds West, a distance of 115.39 feet to a point in Township Road 107, passing an iron pin set at 73.04 feet;

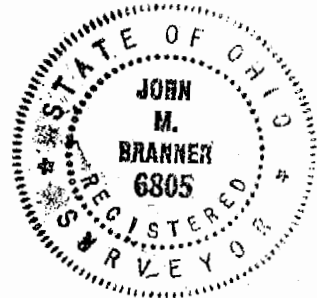
thence, along said road the following bearings and distances:

South 35 degrees 52 minutes 32 seconds West, 50.38 feet
South 16 degrees 16 minutes 54 seconds West, 98.79 feet;
South 30 degrees 52 minutes 00 seconds East, 126.27 feet;
South 30 degrees 45 minutes 18 seconds East, 26.93 feet;
South 51 degrees 26 minutes 05 seconds East, 72.73 feet;
South 59 degrees 40 minutes 52 seconds East, 333.57 feet;
South 61 degrees 03 minutes 37 seconds East, 127.07 feet;
South 52 degrees 28 minutes 19 seconds East, 141.81 feet;
South 47 degrees 42 minutes 17 seconds East, 100.00 feet;
South 47 degrees 23 minutes 16 seconds East, 79.32 feet;

thence, leaving said road, and along an existing fence-line, South 81 degrees 41 minutes 36 seconds East, a distance of 1256.67 feet (passing an iron pin set at 15.00 feet) to the POINT OF BEGINNING; said described tract containing 45.140 acres and is inclusive of a 5.00 acre tract as described in Volume 53, Page 496 of the Official Records of Athens County.

Subject to all easements and rights of way of record.

The above description is based on a survey completed January 1998 by John M. Branner P.S. 6805

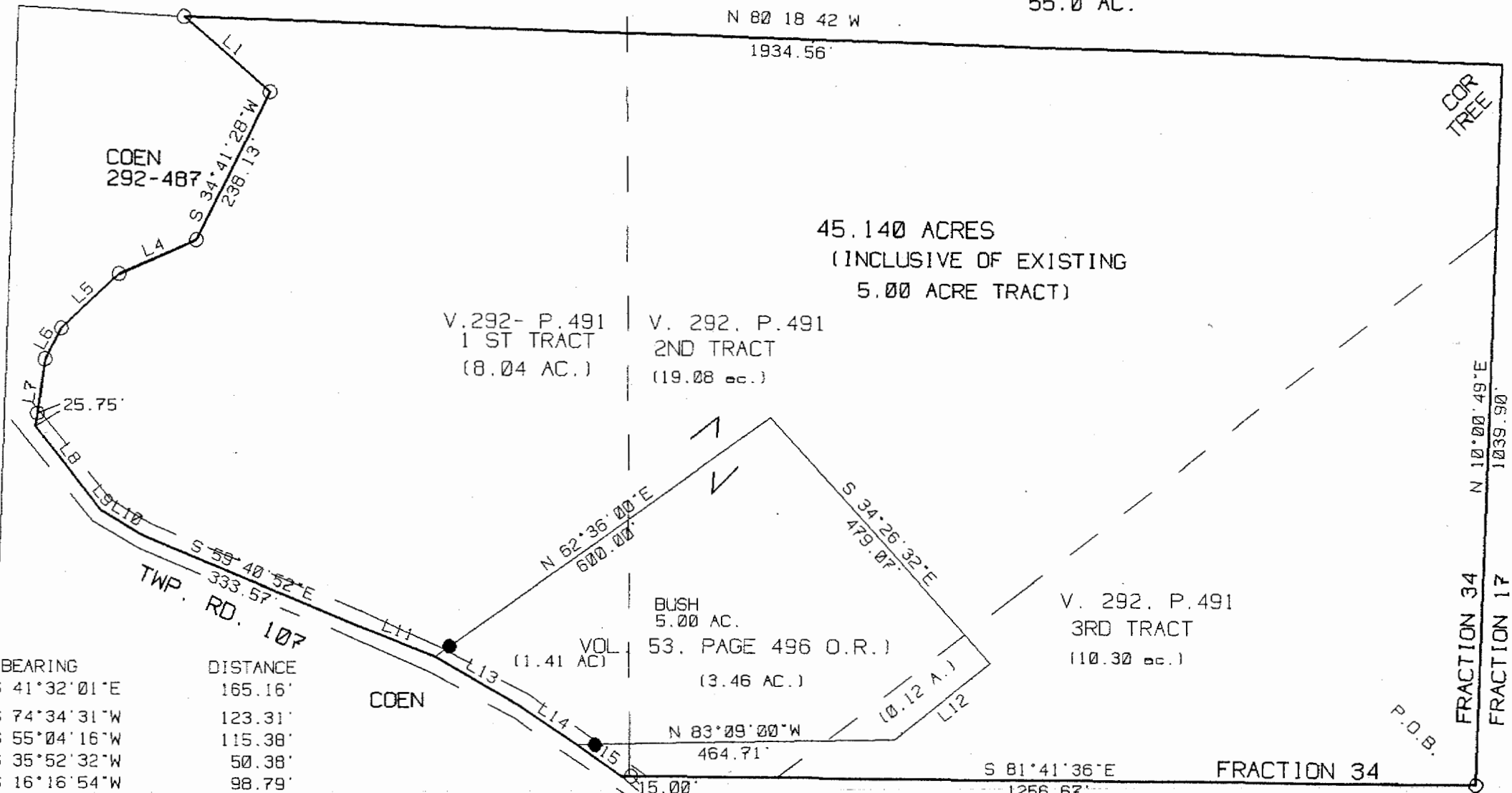


Carthage # 28

Description checked for
Mathematical Accuracy
ATHENS COUNTY
ENGINEER'S OFFICE
BY: V. Anthony Branner
DATE: 2/9/98

11

HOLLIDAY
55.0 AC.

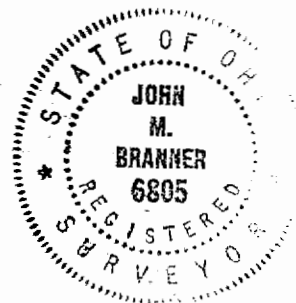


LINE	BEARING	DISTANCE
L 1	S 41°32'01"E	165.16'
L 4	S 74°34'31"W	123.31'
L 5	S 55°04'16"W	115.38'
L 6	S 35°52'32"W	50.38'
L 7	S 16°16'54"W	98.79'
L 8	S 30°52'00"E	126.27'
L 9	S 30°45'18"E	26.93'
L 10	S 51°26'05"E	72.73'
L 11	S 61°03'37"E	127.07'
L 12	S 59°57'00"W	180.00'
L 13	S 52°28'19"E	141.81'
L 14	S 47°42'17"E	100.00'
L 15	S 47°23'16"E	79.32'

SURVEY OF A 45.14 ACRE TRACT IN
FRACTION 34, SECTION 28, T.5, R.12
CARTHAGE TOWNSHIP, ATHENS CO., O.
FOR STEVE BUSH
SURVEYED JANUARY 1998

JOHN M. BRANNER P.S. 6805
12500 N. PEACH RIDGE ROAD
ATHENS, OHIO 614-592-5778

SCALE 1 INCH = 200 FEET
○ = IRON PIN SET
● = IRON PIN FOUND



Description checked for
Mathematical Accuracy
ATHENS COUNTY
ENGINEER'S OFFICE
BY: *John M. Branner*
DATE: *2/1/98*