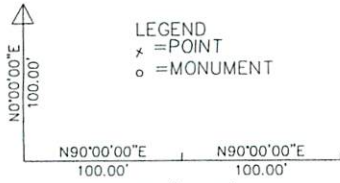


NORTN VIA GPS

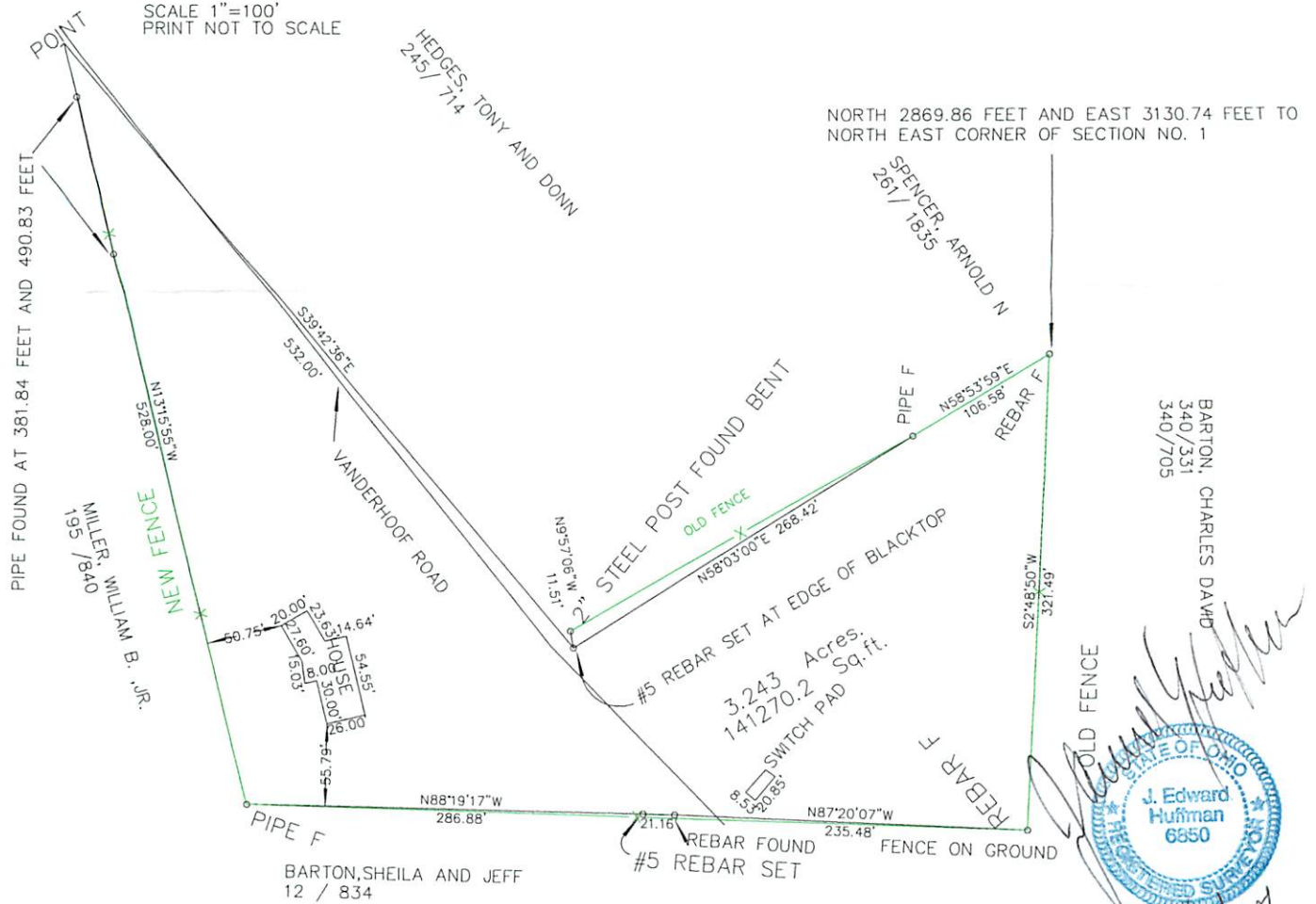


LEGEND
 x = POINT
 o = MONUMENT

SCALE 1"=100'
 PRINT NOT TO SCALE

Description Checked for
 Mathematical Accuracy
 Athens County
 ENGINEER'S OFFICE

BY: J. Blaus
 DATE: 12-10-07



SURVEY STATE OF OHIO, COUNTY OF ATHENS, TOWNSHIP OF CARTHAGE, SECTION #1, TOWN 5, RANGE 12
 LAND OF FRANKLIN BANK, DEED OR 417, PAGE 93

SURVEY BY J. EDWARD HUFFMAN
 OHIO PS # 6850

PLAT JEH 271129



BARTON, CHARLES DAVID
 340 / 331
 340 / 705

BARTON, SHEILA AND JEFF
 12 / 834

3.243 Acres,
 141270.2 Sq. ft.

12/10/07

3.243 Ac.

CARTH-1