

Description Checked for
Mathematical Accuracy
Athens County
ENGINEER'S OFFICE
BY: Branch William
DATE: 3/2/15

DESCRIPTION OF A 5.03 ACRE TRACT

Situated in Fraction 17, Section 22, Town 5, Range 12, Carthage Township, Athens County, Ohio and being a part of the Hensler Tract as described in Volume 499, Page 2004 of the Official Records of Athens County and being more particularly described as follows:

Beginning at a point in Glazier Road, said point bears South 78 degrees 17 minutes 16 seconds West, 1532.36 (calculated) feet from the North-east corner of Fraction 17, Section 22
Thence, leaving said road and along the North-line of Nyeste 484-1074 O.R.
N 87 degrees 07 minutes 35 seconds W, 804.57 feet to an iron pin found, passing an iron pin found at 44.32 feet;
Thence, along new lines created by this survey:
N 32 degrees 46 minutes 22 seconds W, 449.73 feet to an iron pin set
S 87 degrees 00 minutes 08 seconds E, 467.64 feet to a point in Glazier Road, passing an iron pin set at 446.24 feet;
Thence, along said road:
S 3 degrees 32 minutes 00 seconds W, 29.31 feet;
S 4 degrees 55 minutes 28 seconds E, 23.31 feet;
S 13 degrees 18 minutes 51 seconds E, 23.36 feet;
S 23 degrees 39 minutes 09 seconds E, 23.39 feet;
S 32 degrees 27 minutes 54 seconds E, 23.41 feet;
S 40 degrees 40 minutes 35 seconds E, 29.85 feet;
S 46 degrees 57 minutes 41 seconds E, 134.89 feet;
S 54 degrees 32 minutes 37 seconds E, 56.39 feet;
S 71 degrees 36 minutes 35 seconds E, 40.04 feet;
N 89 degrees 31 minutes 56 seconds E, 40.19 feet;
N 69 degrees 49 minutes 14 seconds E, 53.16 feet;
N 62 degrees 03 minutes 35 seconds E, 111.26 feet;
N 71 degrees 39 minutes 25 seconds E, 25.85 feet;
N 83 degrees 35 minutes 06 seconds E, 41.70 feet;
S 82 degrees 16 minutes 29 seconds E, 19.04 feet;
S 69 degrees 40 minutes 07 seconds E, 15.67 feet;
S 56 degrees 02 minutes 27 seconds E, 15.51 feet;
S 44 degrees 08 minutes 42 seconds E, 12.44 feet;
S 33 degrees 35 minutes 29 seconds E, 15.83 feet;
S 39 degrees 02 minutes 55 seconds E, 24.39 feet to a point in Grantor's East-line;
Thence, Along the west-line of Rist (180-288 O.R.)
S 7 degrees 20 minutes 43 seconds E, 101.66 feet;
S 5 degrees 16 minutes 31 seconds E, 42.83 feet to the point of beginning and containing 5.03 acres.



Subject to all easements and rights of way of record.

Iron pins set are 5/8 inch by 30 inch long rebar w/ plastic I.D. Cap stamped Branner P.S. 6805

Bearing : Grid North- N.A.D. 83

The above description is based on a field survey completed February 2015 by

John M. Branner P.S. 6805

A handwritten signature in black ink, appearing to read "John M. Branner".

Geological Survey
Washington, D.C.
April 1954

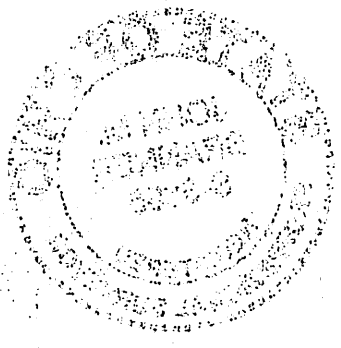
DESCRIPTION OF THE SECTION

The section is located in the vicinity of the intersection of the main road and the road leading to the farmstead. The section is described in Volume 1, page 100 of the Report of the Geological Survey.

The section is a typical example of the type of section which is found in the area. It is a typical example of the type of section which is found in the area.

The section is a typical example of the type of section which is found in the area. It is a typical example of the type of section which is found in the area.

The section is a typical example of the type of section which is found in the area. It is a typical example of the type of section which is found in the area.



The section is a typical example of the type of section which is found in the area. It is a typical example of the type of section which is found in the area.

The section is a typical example of the type of section which is found in the area. It is a typical example of the type of section which is found in the area.

The section is a typical example of the type of section which is found in the area. It is a typical example of the type of section which is found in the area.

Hensler 274-1012 O.R.

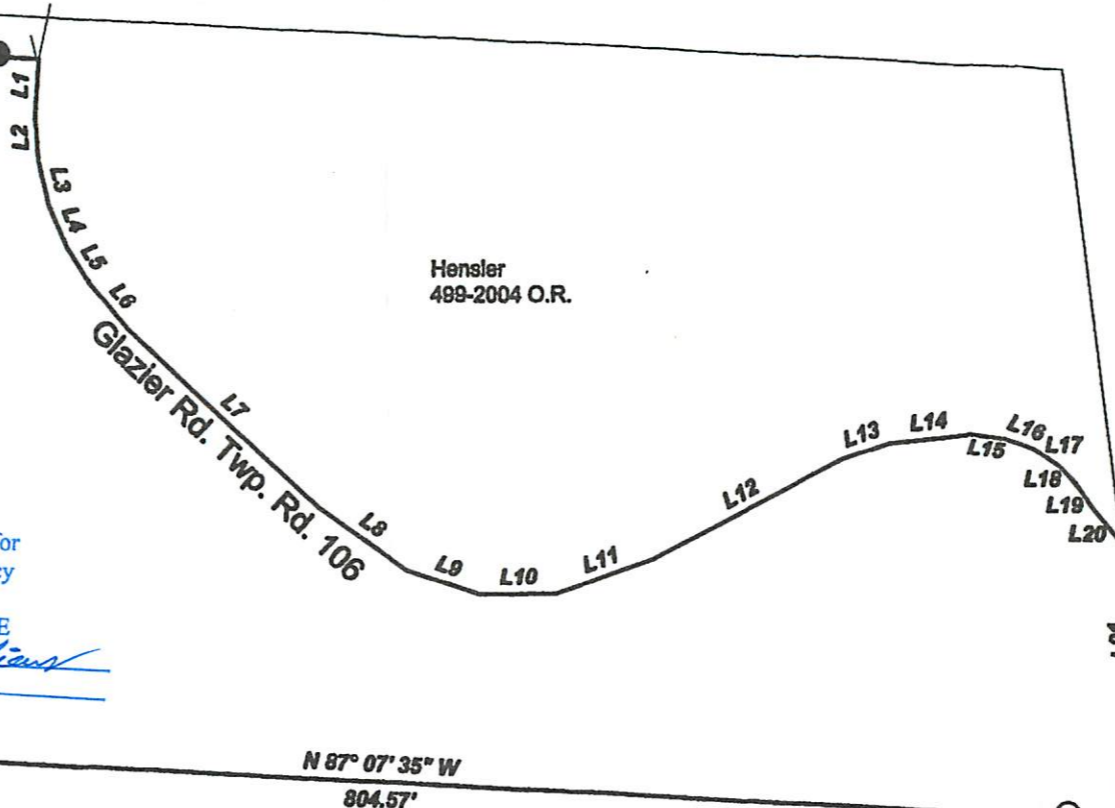
Hensler 499-2004 O.R. S 87° 00' 08" E 467.64'

+448.24'

Hensler 499-2004 O.R. N 32° 46' 22" W 449.73'

5.03 Acres

Description Checked for Mathematical Accuracy
Athens County
ENGINEER'S OFFICE
BY: *Thomas Williams*
DATE: 3/2/15



Line	Bearing	Distance
1	S 3° 32' 00" W	2.31'
2	S 4° 55' 28" E	2.31'
3	S 13° 18' 51" E	2.36'
4	S 23° 39' 09" E	2.39'
5	S 32° 27' 54" E	2.41'
6	S 40° 40' 35" E	2.85'
7	S 46° 57' 41" E	14.89'
8	S 54° 32' 37" E	5.39'
9	S 71° 36' 35" E	0.04'
10	N 89° 31' 58" E	0.19'
11	N 69° 49' 14" E	53.18'
12	N 62° 03' 35" E	111.26'
13	N 71° 39' 25" E	25.85'
14	N 83° 35' 08" E	41.70'
15	S 82° 16' 28" E	19.04'
16	S 69° 40' 07" E	15.67'
17	S 56° 02' 27" E	15.51'
18	S 44° 08' 42" E	12.44'
19	S 33° 35' 28" E	15.83'
20	S 39° 02' 55" E	24.39'
21	S 7° 20' 43" E	101.66'
22	S 5° 16' 31" E	42.83'

Nyesta 484-1074 O.R. N 87° 07' 35" W 804.57'

Rist 180-288 O.R.

N.E. cor of Fr. 17, Sec. 22

S 78° 17' 16" W 1532.36'(calc)

+44.32' P.O.B.

Survey of a 5.03 Acre Tract
in Fraction 17, Section 22,
Town 5, Range 12, Carthage Twp...,
Athens County, Ohio

Surveyed February 2015

John M. Branner
John M. Branner P.S. 6805
62 East First Street
The Plains, Ohio 45780
740-541-0350



- = Iron pin set 5/8"x30" long rebar
 - = Iron pin found
- Bearings: N.A.D. 83- Grid North
Ref. Docs.: TaxPlat-deeds

