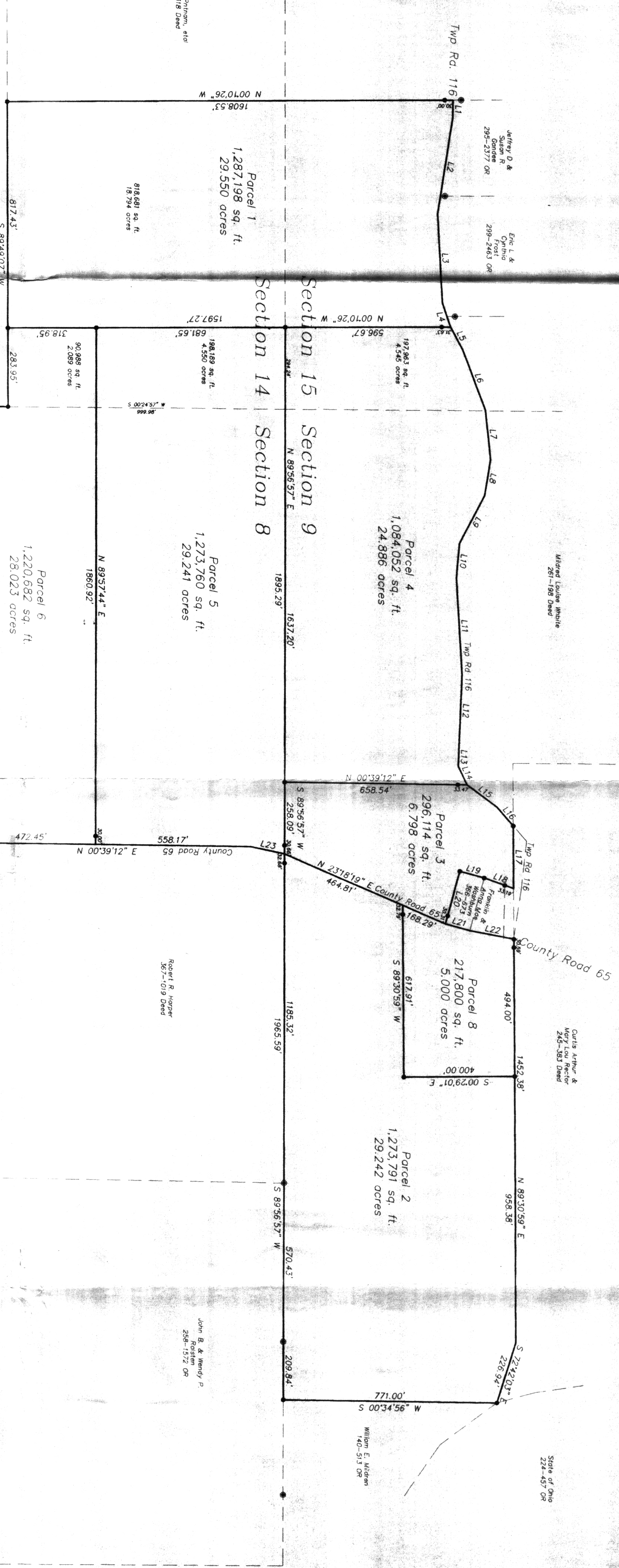




Elizabeth Pollock, 410
279-318 Deed



LINE	BEARING	LENGTH
L1	S89°20'20"E	614.84'
L2	S81°03'58"E	350.16'
L3	N69°22'42"E	260.03'
L4	N00°10'26"W	1597.27'
L5	N61°24'38"E	92.95'
L6	N69°22'42"E	232.21'
L7	N64°02'19"E	178.17'
L8	S80°48'01"E	131.61'
L9	S80°48'01"E	131.61'
L10	S85°07'42"E	124.29'
L11	N86°50'10"E	347.01'
L12	S82°45'46"E	264.15'
L13	S82°45'46"E	66.78'
L14	N85°40'28"E	134.82'
L15	N48°35'48"E	88.35'
L16	N48°35'48"E	88.35'
L17	N89°30'59"E	228.13'
L18	S19°37'47"W	112.60'
L19	S19°37'47"W	80.25'
L20	S19°37'47"W	80.25'
L21	N15°04'47"E	90.25'
L22	N10°44'47"E	161.72'
L23	N11°49'15"E	126.65'
L24	N89°10'42"W	165.00'

Total Acreage
7,980,235 sq. ft.
183,201 acres

Description recorded for
Athens County
Plains Survey
By: *Gregory K. Wright*
DATE: 06/04/01



C:\land Projects\12\Weaver\dwg\Weaver.dwg 06/11/01 10:21:51 PM EDT

Plot of Survey of 183,201 Acres into 8 Parcels
Sited in Sections 8, 9, 14 & 15
Town 5, Range 12, Carthage Township,
Athens County, Ohio
Surveyed June 2001 for:
Blake and Joanna Weaver

Gregory K. Wright
Gregory K. Wright



Gregory K. Wright
Professional Engineer
1164 Channingway Blvd
The Plains, Ohio 45780
Fax: 740-797-4142
P-00293

Changed Acreage Parcels 3 & 4

GKW

06/04/01