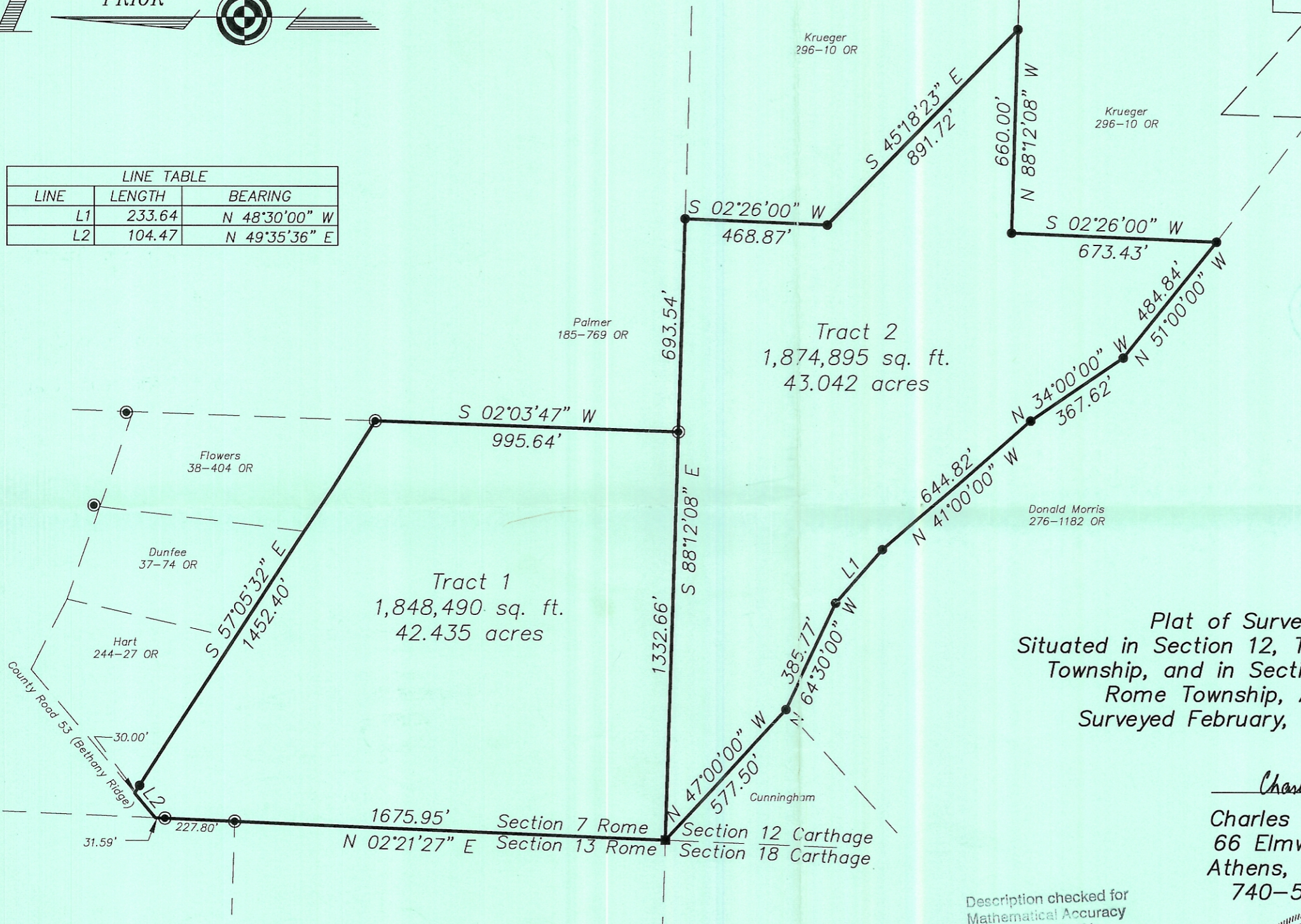


LINE TABLE		
LINE	LENGTH	BEARING
L1	233.64	N 48°30'00" W
L2	104.47	N 49°35'36" E

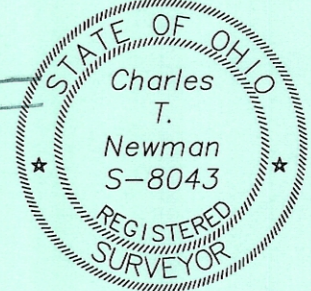


- △ = Railroad Spike Found
- ▲ = Railroad Spike Set
- ⊙ = Iron Pin Found
- = Iron Pin Set
- = Stone Found
- ⊕ = Monument Found

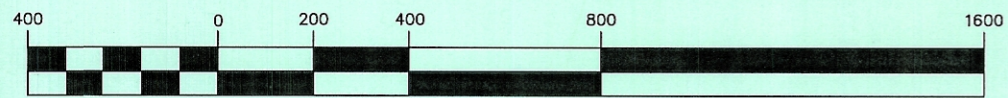
Plat of Survey of Two Tracts
 Situated in Section 12, Town 5, Range 12, Carthage
 Township, and in Section 7, Town 6, Range 12,
 Rome Township, Athens County, Ohio
 Surveyed February, 2002 for Norma Orum

Charles T. Newman
 Charles T. Newman
 66 Elmwood Place
 Athens, Ohio 45701
 740-594-1884

Description checked for
 Mathematical Accuracy
 ATHENS COUNTY
 ENGINEER'S OFFICE
 BY: *Charles T. Newman*
 DATE: *2/20/02*



GRAPHIC SCALE



(IN FEET)
 1 inch = 400 ft.