

DESCRIPTION SURVEY FOR EARLE A. KOCHER III, TRACT #2

STATE OF OHIO, COUNTY OF ATHENS,

TOWNSHIP OF CARTHAGE, SECTION 4, TOWN 5, RANGE 12, (23749 BRIMSTONE ROAD)

BEGINNING AT A #5 REBAR SET AT THE BASE OF A 12" BLACK WALNUT TREE THE NORTH EAST CORNER TO SECTION # 4. WITH THE EAST LINE OF SECTION #4 THE LINE OF LEE F. RADER II, DEED OR286, PAGE 1749, THENCE

S 00 42 07 W 109.30 FEET TO A REBAR FOUND CORNER TO GERALDINE E. SATOW, DEED OR 316, PAGE 2135, WITH THE LINE OF SATOW, THENCE

S 89 20 46 W 352.461 FEET TO A REBAR FOUND CORNER TO D. L. WHALEY, DEED OR 303, PAGE 1812 WITH THE LINE OF WHALEY THE NEXT 2 LINES, THENCE

S 89 19 06 W 535.133 FEET TO A REBAR FOUND PASSING A #5 REBAR SET AT 168.82 FEET, THENCE

S 33 45 59 W 86.246 TO A POINT IN BRIMSTONE ROAD CORNER TO CHARLES ALLOWAY, DEED 317, PAGE 516 PASSING A REBAR FOUND AT 56.25 FEET WITH THE LINE OF ALLOWAY THE NEXT 2 LINES, THENCE

S 53 59 00 W 32.00 FEET TO A #5 REBAR SET, THENCE

N 89 17 53 W 380.00 FEET TO A #5 REBAR SET IN THE LINE OF DON E. HUGHES, DEED OR 271, PAGE 0725 WITH THE LINE OF HUGHES, THENCE

N 00 42 07 E 222.00 FEET TO A #5 REBAR SET, IN LINE OF LARRY G. COLE ETAL, DEED OR291, PAGE 2405 WITH LINE OF COLE AND LINE OF WILLIAM J. VAN BUREN DEED260, PAGE 1021, THENCE

S 89 17 53 E 220.00 FEET TO A #5 REBAR SET THE SOUTH WEST CORNER TO TRACT #1 THIS DEED, WITH THE SOUTH LINE OF TRACT #1, THENCE

S 89 17 53 E 1120.00 FEET TO PLACE OF BEGINNING

BEING 4.684 ACRE OF LAND, PROPERTY OF COLLEEN C. ASHWORTH , DEED OR 284, PAGE 0589 AND OR 275, PAGE 400 RECORDS OF THE RECORDER OF THE COUNTY OF ATHENS.

SURVEY BY J. EDWARD HUFFMAN, OHIO PS # 6850 AND AS SHOWN ON PLAT JEH 290105 A PART OF THIS RECORD. SUBJECT TO ALL RIGHT OF WAY OF RECORD. ORIENTATION VIA RECORDED PLAT DEED OR 303, PAGE 1813.

PAGE 2 OF 2

Description Checked for
Mathematical Accuracy
Athens County
ENGINEER'S OFFICE
BY: S. Blause
DATE: 4-28-09

J. Edward Huffman
4/23/2009

Janice Null 81/480

1/2" pipe found end of fence at edge of cliff

deep gorge

#5 rebar s fence now down 384.01' N0°42'07"E 3.15'

S89°17'53"E 1120.00'

#5 rebar s at base of cliff

#5 rebar s

#5 rebar s

#5 rebar s

#5 rebar set

#5 REBAR SET

William J. Van Buren 260/1021

1063.92' N0°42'07"E

544.47'

#5 rebar set

#5 rebar set

#5 REBAR S

NORTH WITH RECORDED PLAT CR 303/1813



SCALE 1" = 100'

LEGEND

O=MONUMENT FOUND OR SET
X= POINT

Old fence in trees west of line

Lee F. rader/or 286/1719

S0°42'07"W 1063.92'

430.87'

#5 rebar s

576.38'

#5 rebar s

883.70'

#5 rebar s

#5 rebar s

#5 rebar s

#5 rebar s

#5 rebar s

#5 rebar s

#5 rebar s

#5 rebar s

#5 rebar s

#5 rebar s

#5 rebar s

#5 rebar s

#5 rebar s

#5 rebar s

#5 rebar s

#5 rebar s

#5 rebar s

#5 rebar s

#5 rebar s

#5 rebar s

BRIMSTONE ROAD CR56

LARRY G. COLE ETAL OR291/2405

Don E. Hughes or 271/0725

NOTE: DRIVEWAY WITH R-O-W CROSSES THIS CORNER

N0°42'07"E 222.00'

S89°17'53"E 220.00'

#5 REBAR S

#5 REBAR SET

#5 REBAR S

#5 REBAR S

#5 REBAR S

#5 REBAR S

#5 REBAR S

#5 REBAR S

#5 REBAR S

#5 REBAR S

#5 REBAR S

#5 REBAR S

N56°15'17"W 202.47'

S89°17'53"E 220.00'

26.12'

#5 REBAR S

N57°10'45"W 65.34'

N41°32'42"W 46.05'

N54°07'32"W 112.28'

S43°43'19"W 87.24'

S55°59'00"W 74.90'

#5 REBAR S

#5 REBAR S

#5 REBAR S

#5 REBAR S

#5 REBAR S

#5 REBAR S

#5 REBAR S

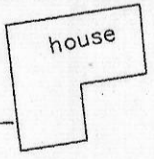
#5 REBAR S

Charles Alloway 317/516

SURVEY FOR EARLE A. KOCHER III, LAND OF COLLEEN C. ASHWORTH DEED OR 284/0589 AND OR 275/ 400 PARCEL F0100100109.00 AND F0100100110.00 STATE OF OHIO, COUNTY OF ATHENS, TOWNSHIP OF CARTHAGE SECTION 4 & 5, TOWN 5, RANGE 12 OHIO CO. PURCHASE

SURVEY BY J.EDWARD HUFFMAN OHIO SURVEYOR # 6850, PHONE 304 484 4707, CELL 304 481 3123

PLAT JEH 290105



Driveway

Tract #1

27.355 Acres. 1191590.4 Sq.ft.

#5 REBAR SET AT 1 ft. WALNUT ON RIDGE THE SOUTH EAST CORNER TO SECTION #5 N/E CORNER TO SECTION #4

N89°17'53"W 1120.00'

Tract #2

4.684 Acres. 204020.4 Sq.ft.

S89°19'05"W 515.133'

168.82'

#5 REBAR S

REBAR F

REBAR F

REBAR F

REBAR F

REBAR F

REBAR F

REBAR F

REBAR F

REBAR F

REBAR F

REBAR F

REBAR F

REBAR F

REBAR F

REBAR F

D.L. & D.S. Whaley or 303/1812

Description Checked for Mathematical Accuracy Athens County ENGINEER'S OFFICE BY: *S. Blauer* DATE: 4-28-09

Geraldine E. Satow or 316/2135



J. Edward Huffman
3/17/2009