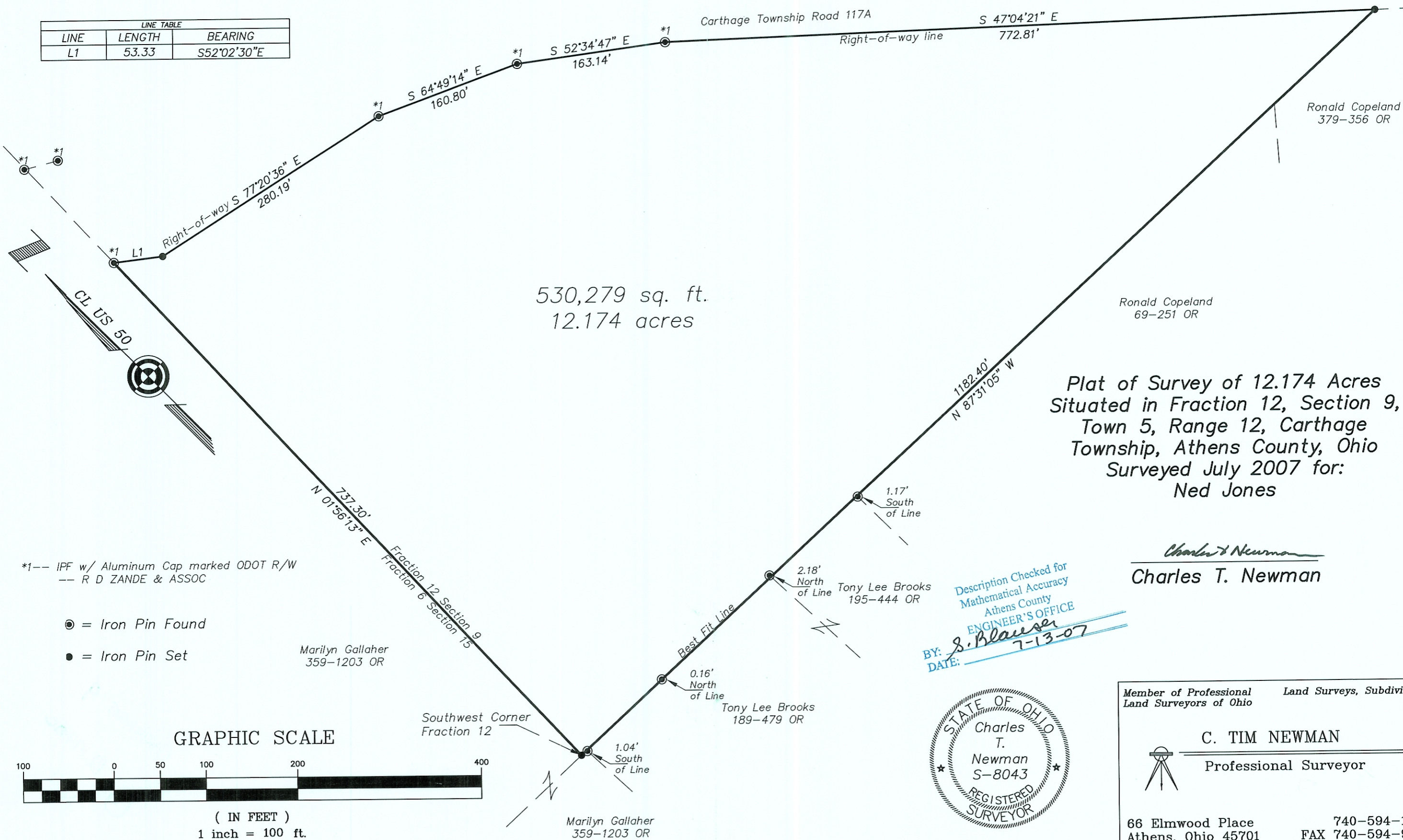


LINE TABLE		
LINE	LENGTH	BEARING
L1	53.33	S52°02'30"E



530,279 sq. ft.  
12.174 acres

Plat of Survey of 12.174 Acres  
Situating in Fraction 12, Section 9,  
Town 5, Range 12, Carthage  
Township, Athens County, Ohio  
Surveyed July 2007 for:  
Ned Jones

*Charles T. Newman*  
Charles T. Newman

Description Checked for  
Mathematical Accuracy  
Athens County  
ENGINEER'S OFFICE  
BY: *S. Blawie*  
DATE: 7-13-07



Member of Professional Land Surveyors of Ohio  
Land Surveys, Subdivisions  
**C. TIM NEWMAN**  
Professional Surveyor  
66 Elmwood Place  
Athens, Ohio 45701  
740-594-1884  
FAX 740-594-9413

\*1-- IPF w/ Aluminum Cap marked ODOT R/W  
-- R D ZANDE & ASSOC  
  
⊙ = Iron Pin Found  
● = Iron Pin Set

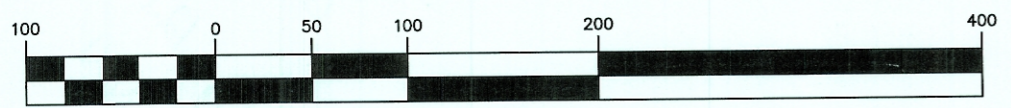
Marilyn Gallaher  
359-1203 OR

Tony Lee Brooks  
195-444 OR

Tony Lee Brooks  
189-479 OR

Marilyn Gallaher  
359-1203 OR

GRAPHIC SCALE



( IN FEET )  
1 inch = 100 ft.