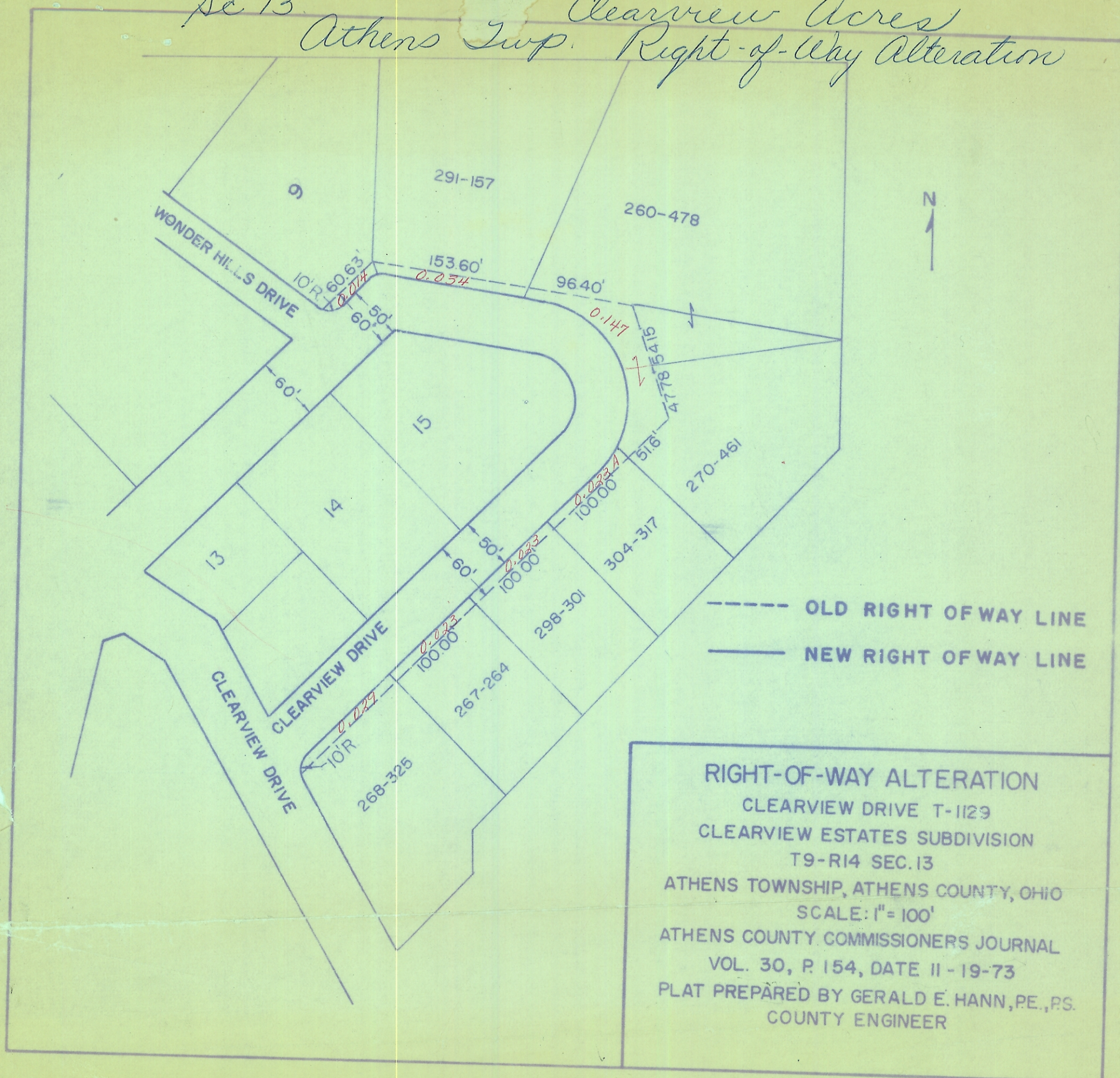


Sec 13. Clearview Acres
Athens Twp. Right-of-Way Alteration



RIGHT-OF-WAY ALTERATION
CLEARVIEW DRIVE T-1129
CLEARVIEW ESTATES SUBDIVISION
T9-R14 SEC. 13
ATHENS TOWNSHIP, ATHENS COUNTY, OHIO
SCALE: 1" = 100'
ATHENS COUNTY COMMISSIONERS JOURNAL
VOL. 30, P. 154, DATE 11-19-73
PLAT PREPARED BY GERALD E. HANN, PE., PS.
COUNTY ENGINEER