

↑  
N

# D. H. MOORE'S

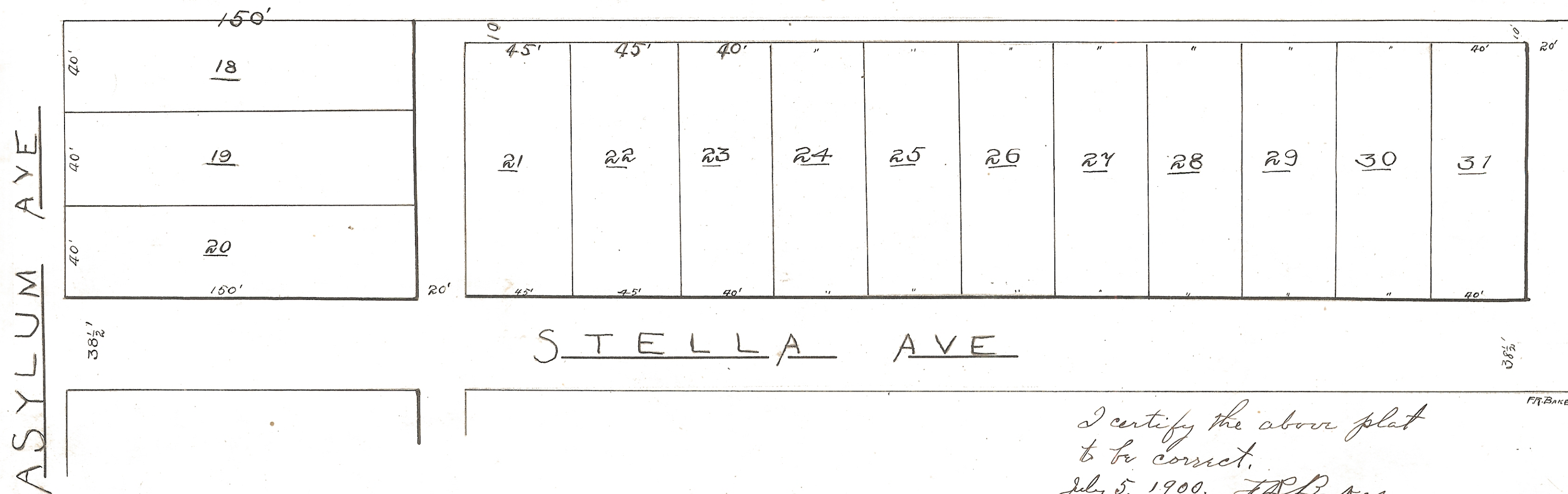
SUB-DIVISION OF OUT-LOT NO 6

## Richland

— SCALE 1" = 40' —

ENVELOPE: 165B

D. H. MOORE'S SUBDIVISION  
OF OUTLOT 6  
RICHLAND  
ATHENS TWP



I certify the above plat  
to be correct.  
July 5, 1900. F. B. Baker

Transferred July 3rd 1900  
W. S. Scott Auditor, A.C.

Received for record July 3rd 1900  
Recorded July 3rd 1900  
Attest Elmer Spalding  
Recorder