

ROBINSON SURVEYING

MEMBER-PROFESSIONAL LAND SURVEYORS OF OHIO
12355 LIARS CORNER ROAD, MILLFIELD, OHIO 45761

ALAN D. ROBINSON
Registered Land Surveyor

TELEPHONE
(740) 593-8774

DESCRIPTION OF A 51.305 ACRE TRACT

Situated in Sections 11 & 17, Town 10, Range 14, Dover Township, Athens County, Ohio, and being more particularly described as follows:

Commencing at a found Stone at the Northwest corner of Section 11;
thence, following the West line of said Section, South 0 degrees 57 minutes 32 seconds West, a distance of 621.62 feet to a point said point being the POINT OF BEGINNING of the following described tract;
thence, leaving said West Section line, South 89 degrees 17 minutes 04 seconds East, a distance of 1324.78 feet (Basis of Bearing) to an iron pin found with a cap stamped Seymour & Associates in the Grantors East fence line;
thence, following said East fence line, South 1 degree 09 minutes 22 seconds West, a distance of 1385.19 feet to an iron pin set;
thence, leaving said fence line, North 89 degrees 57 minutes 23 seconds West, a distance of 1320.17 feet to a found Stone in the aforementioned West Section line;
thence, following said Section line, North 0 degrees 58 minutes 06 seconds East, a distance of 689.88 feet to an iron pin found;
thence, leaving said Section line, South 87 degrees 29 minutes 50 seconds West, a distance of 540.04 feet to a point in Township road 331, passing an iron pin found at 519.18 feet;
thence, following said Road, North 1 degree 30 minutes 20 seconds West, a distance of 83.02 feet to a point;
thence, North 4 degrees 46 minutes 53 seconds East, a distance of 84.61 feet to a point;
thence, North 13 degrees 35 minutes 56 seconds East, a distance of 111.25 feet to a point;
thence, North 3 degrees 40 minutes 49 seconds East, a distance of 77.95 feet to a point;
thence, North 21 degrees 03 minutes 00 seconds West, a distance of 126.95 feet to a point, said point being the point of curvature of a tangent curve, concave to the east, having a chord of 180.65 feet a chord Bearing of North 11 degrees 23 minutes 06 seconds East, having a radius of 168.41 feet and a central angle of 64 degrees 52 minutes 11 seconds;
thence, north along said curve, a distance of 190.67 feet to a point;
thence, North 43 degrees 49 minutes 12 seconds East, a distance of 235.19 feet to a point;
thence, South 46 degrees 08 minutes 39 seconds East, a distance of 37.93 feet to an iron pin found with a cap stamped Seymour & Associates;
thence, South 57 degrees 20 minutes 14 seconds East, a distance of 51.10 feet to an iron pin found with a cap stamped Seymour & Associates;
thence, South 74 degrees 27 minutes 48 seconds East, a distance of 104.53 feet to an iron pin found with a cap stamped Seymour & Associates;
thence, South 89 degrees 17 minutes 04 seconds East, a distance of 191.30 feet to the POINT OF BEGINNING; said described tract containing 51.305 acres (2,234,840.3014 square feet), 42.283 acres being out of Section 11 and 9.022 acres being in Section 17.

Subject to all easements and right-of-way of record.

All iron pins set are 5/8 inch by 30-inch long rebar with a yellow cap stamped Alan Robinson RLS 8049.

The above description is based on a field Survey completed March 28, 2000, By Alan D. Robinson P.S. 8049, 12355 Liars Corner Road, Millfield, Ohio 45761 (740) 593-8774

Alan D Robinson

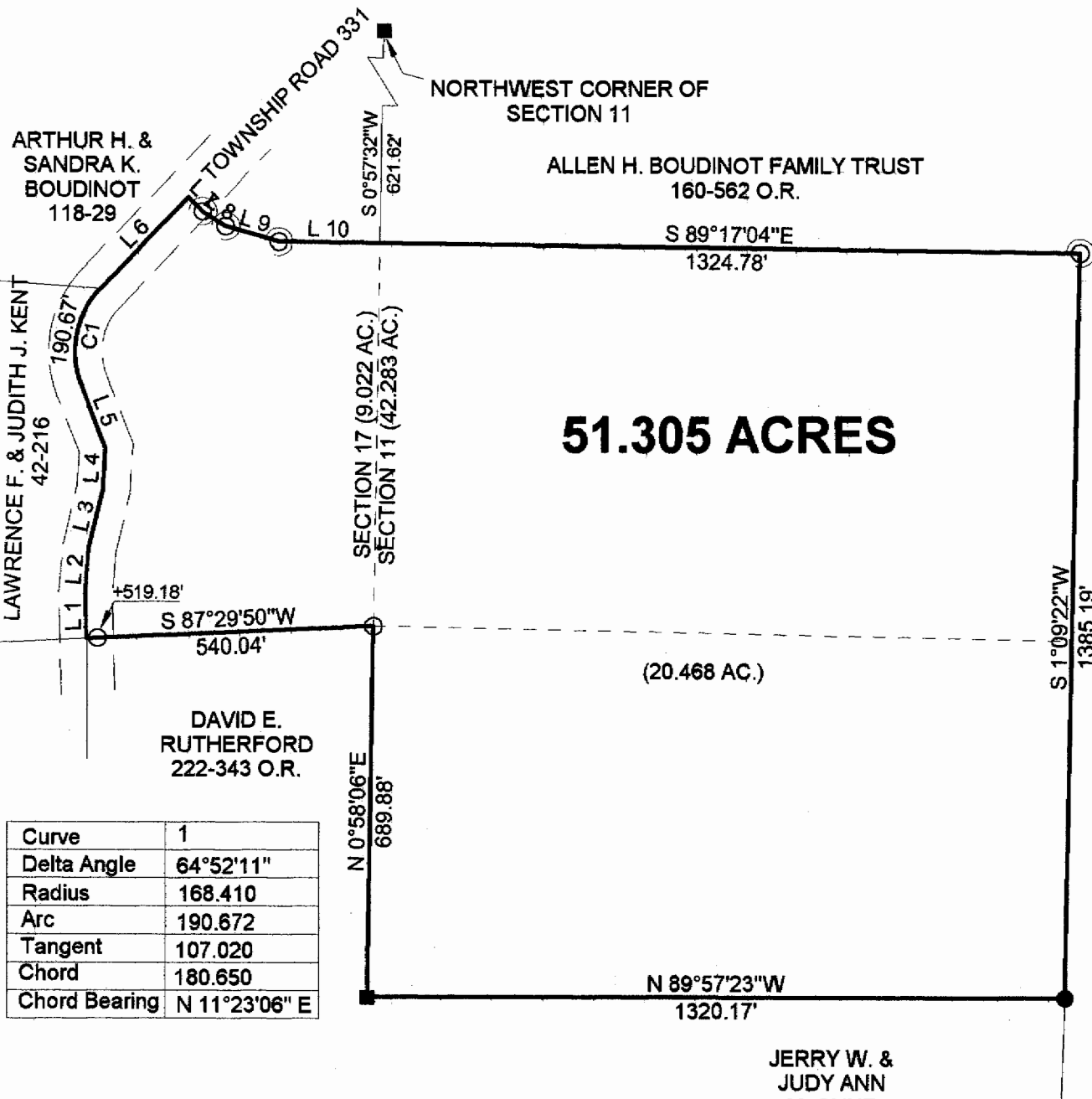
Description checked for
Mathematical Accuracy
ATHENS COUNTY
ENGINEER'S OFFICE
BY: *S. Blause*
DATE: *3-28-2000*



000087

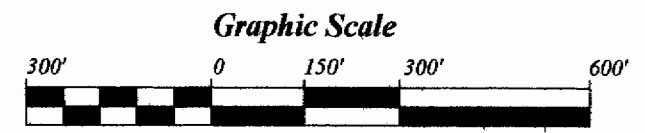
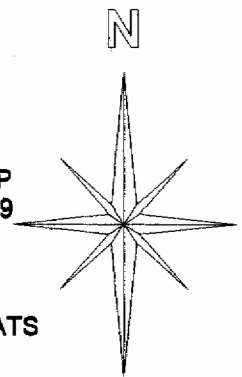
Dov #11

000088



Line	Bearing	Distance
1	N 1°30'20"W	83.02'
2	N 4°46'53"E	84.61'
3	N 13°35'56"E	111.25'
4	N 3°40'49"E	77.95'
5	N 21°03'00"W	126.95'
6	N 43°49'12"E	235.19'
7	S 46°08'39"E	37.93'
8	S 57°20'14"E	51.10'
9	S 74°27'48"E	104.53'
10	S 89°17'04"E	191.30'

- = IRON PINS SET WITH A YELLOW CAP STAMPED ALAN ROBINSON RLS 8049
- = IRON PINS FOUND
- ⊙ = IRON PINS FOUND WITH A CAP STAMPED SEYMOUR & ASSOCIATS
- = STONE FOUND



BEARINGS ARE BASED ON A SURVEY OF AN 18.938 ACRE TRACT PERFORMED BY GEORGE F. SEYMOUR P.S. 6044 IN MARCH 2000 AND ARE USED TO DENOTE ANGLES ONLY

Curve	1
Delta Angle	64°52'11"
Radius	168.410
Arc	190.672
Tangent	107.020
Chord	180.650
Chord Bearing	N 11°23'06" E

**SURVEY OF A 51.305 ACRE TRACT
SECTIONS 11 & 17, T. 10, R. 14, DOVER TOWNSHIP
ATHENS COUNTY, OHIO
SURVEYED MARCH 28, 2000**

BY: Alan D Robinson
ALAN D. ROBINSON P.S. 8049
12355 LIARS CORNER ROAD
MILLFIELD, OHIO 45761
(740) 593-8774



Description checked for Mathematical Accuracy
ATHENS COUNTY ENGINEER'S OFFICE
BY: S. Blause
DATE: 3-28-2000

JERRY W. & JUDY ANN McCUNE
265-181 & 69-108 O.R.

GREGORY R. & MAXINE CABLE
123-709

MARY & NORMAN SIMPKINS
334-95 & 402 364-793

51.305 ACRES