

BRANNER SURVEYING

MEMBER-PROFESSIONAL LAND SURVEYORS OF OHIO

12500 N. PEACH RIDGE ROAD
ATHENS, OHIO 45701

JOHN M. BRANNER
Registered Land Surveyor

TELEPHONE
(614) 592-5778

DESCRIPTION OF A 16.209 ACRE TRACT

Situated in Fraction 1,7, Section 14, T. 10, R. 14, Dover Township, Athens County, Ohio and being more particularly described as follows.

Commencing at an iron pin found bearing South 1899.49 feet and west 2911.15 feet from the North-east corner of Fraction 1, said point being the POINT OF BEGINNING;
thence, North 78 degrees 23 minutes 06 seconds East, a distance of 390.02 feet to an iron pin found;
thence, North 43 degrees 17 minutes 37 seconds West, a distance of 304.38 feet to an iron pin found;
thence, North 21 degrees 10 minutes 08 seconds West, a distance of 317.77 feet to an iron pin found;
thence, North 21 degrees 35 minutes 30 seconds East, a distance of 299.29 feet to an iron pin found;
thence, North 18 degrees 09 minutes 42 seconds West, a distance of 232.52 feet to a point in Township Road 324, passing an iron pin found at 211.23 feet;
thence, following said road, North 66 degrees 18 minutes 36 seconds East, a distance of 60.28 feet to a point;
thence, leaving said Road, South 18 degrees 09 minutes 42 seconds East, a distance of 260.02 feet to an iron pin set, passing an iron pin set at 27.10 feet;
thence, South 21 degrees 35 minutes 30 seconds West, a distance of 297.50 feet to an iron pin set;
thence, South 21 degrees 10 minutes 08 seconds East, a distance of 282.55 feet to an iron pin set;
thence, South 43 degrees 17 minutes 37 seconds East, a distance of 326.13 feet to an iron pin set;
thence, North 75 degrees 47 minutes 22 seconds East, a distance of 175.10 feet to an iron pin set;
thence, South 30 degrees 36 minutes 43 seconds East, a distance of 1014.81 feet to an iron pin set;
thence, South 69 degrees 50 minutes 21 seconds West, a distance of 615.59 feet to an iron pin set;
thence, North 30 degrees 28 minutes 07 seconds West, a distance of 1099.04 feet to a to the POINT OF BEGINNING; said described tract containing 16.209 acres (706,057.6485 square feet).

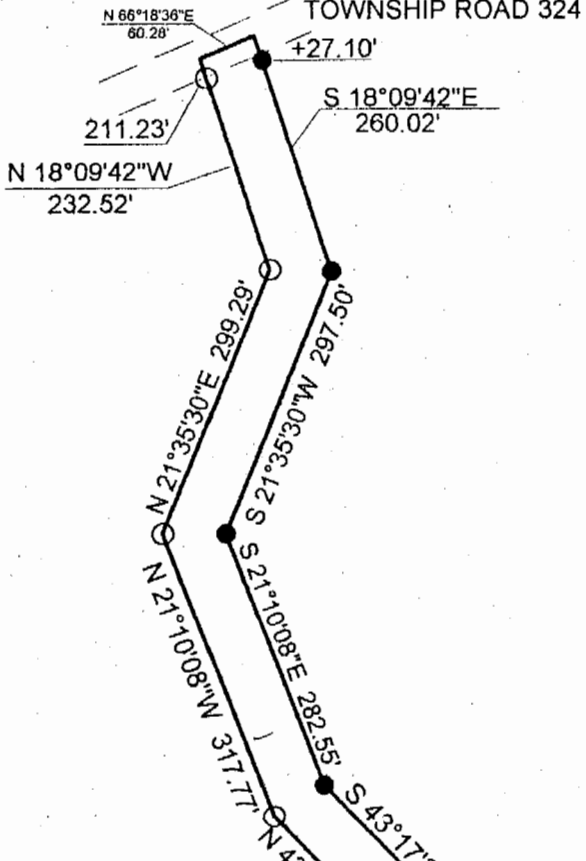
Subject to all easements and right-of-ways of record.
All iron pins set are 5/8 inch x 30 inch long rebar.

The above description is based on a field survey completed December 1997 By: John M. Branner P.S. 6805, 12500 N. Peach Ridge Road, Athens, Ohio 45701 (614) 592-5778



John M. Branner
39

Description checked for
Mathematical Accuracy
ATHENS COUNTY
ENGINEER'S OFFICE
BY: *S. Blawie*
DATE: 12-22-97
*added Fraction
7 on 1-7-98*



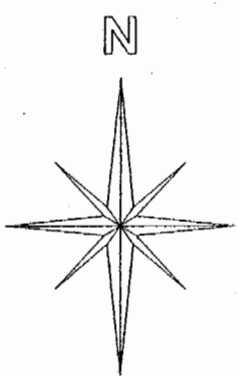
SHIELDS
381-215

P.O.B.
BEARS SOUTH 1899.49'
AND WEST 2911.15' FROM
THE NORTH-EAST CORNER
OF FRACTION #1

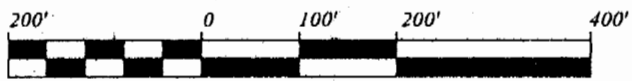
P.O.B.

ATHENS COUNTY
COMMSSIONERS
183-32 AC.
193-385

16.209 ACRES



Graphic Scale



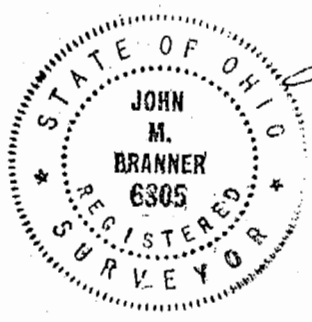
1 INCH = 200 FEET

- = IRON PIN FOUND
- = IRON PIN SET

BEARINGS ARE BASED ON A
SURVEY OF A 10.23 ACRE TRACT
AND ARE USED TO DENOTE
ANGLES ONLY

SURVEY OF A 16.209 ACRE TRACT
FRACTION 17 SECTION 14, T. 10, R. 14,
DOVER TOWNSHIP, ATHENS COUNTY,
OHIO
SURVEYED DECEMBER 1997

John M. Branner
JOHN M. BRANNER P.S. 6805
12500 N. PEACH RIDGE ROAD,
ATHENS, OHIO (740) 592-5778



Description checked for
Mathematical Accuracy
ATHENS COUNTY
ENGINEER'S OFFICE
BY: *S. Blausen*
DATE: *12-22-97*

40

Doc #14