

BRANNER SURVEYING

MEMBER-PROFESSIONAL LAND SURVEYORS OF OHIO

12500 N. PEACH RIDGE ROAD

Description checked for ATHENS, OHIO 45701

Mathematical Accuracy

ATHENS COUNTY

ENGINEER'S OFFICE

BY: S. Blauger

DATE: 7-29-98

JOHN M. BRANNER
Registered Land Surveyor

TELEPHONE
(614) 592-5778

DESCRIPTION OF A 7.387 ACRE TRACT

Situated in Fraction 1, Section 14, T. 10, R. 14, Dover Township, Athens County, Ohio and being more particularly described as follows.

Commencing at a point in Township Road 324 bearing South 779.65 feet and West 2759.73 feet from the North-east corner of Fraction 1, said point being the POINT OF BEGINNING;
thence, following said Road, North 66 degrees 18 minutes 36 seconds East, a distance of 57.11 feet to a point;
thence, North 63 degrees 57 minutes 50 seconds East, a distance of 200.74 feet to a point;
thence, North 85 degrees 02 minutes 44 seconds East, a distance of 114.85 feet to a point;
thence, South 87 degrees 14 minutes 31 seconds East, a distance of 71.64 feet to a point;
thence, leaving said Road, South 2 degrees 15 minutes 01 second West, a distance of 163.91 feet to an iron pin set, passing an iron pin set at 25.00 feet;
thence, South 12 degrees 34 minutes 14 seconds West, a distance of 139.86 feet to an iron pin set;
thence, South 23 degrees 56 minutes 46 seconds West, a distance of 309.77 feet to an iron pin set;
thence, South 33 degrees 55 minutes 05 seconds West, a distance of 118.48 feet to an iron pin set;
thence, South 45 degrees 25 minutes 15 seconds East, a distance of 306.95 feet to an iron pin set;
thence, South 16 degrees 08 minutes 13 seconds East, a distance of 210.21 feet to an iron pin set;
thence, South 75 degrees 47 minutes 22 seconds West, a distance of 175.10 feet to an iron pin set;
thence, North 43 degrees 17 minutes 37 seconds West, a distance of 326.13 feet to an iron pin set;
thence, North 21 degrees 10 minutes 08 seconds West, a distance of 282.55 feet to an iron pin set;
thence, North 21 degrees 35 minutes 30 seconds East, a distance of 297.50 feet to an iron pin set;
thence, North 18 degrees 09 minutes 42 seconds West, a distance of 260.02 feet to a to the POINT OF BEGINNING, passing an iron pin set at 232.92 feet; said described tract containing 7.387 acres (321,768.7475 square feet).

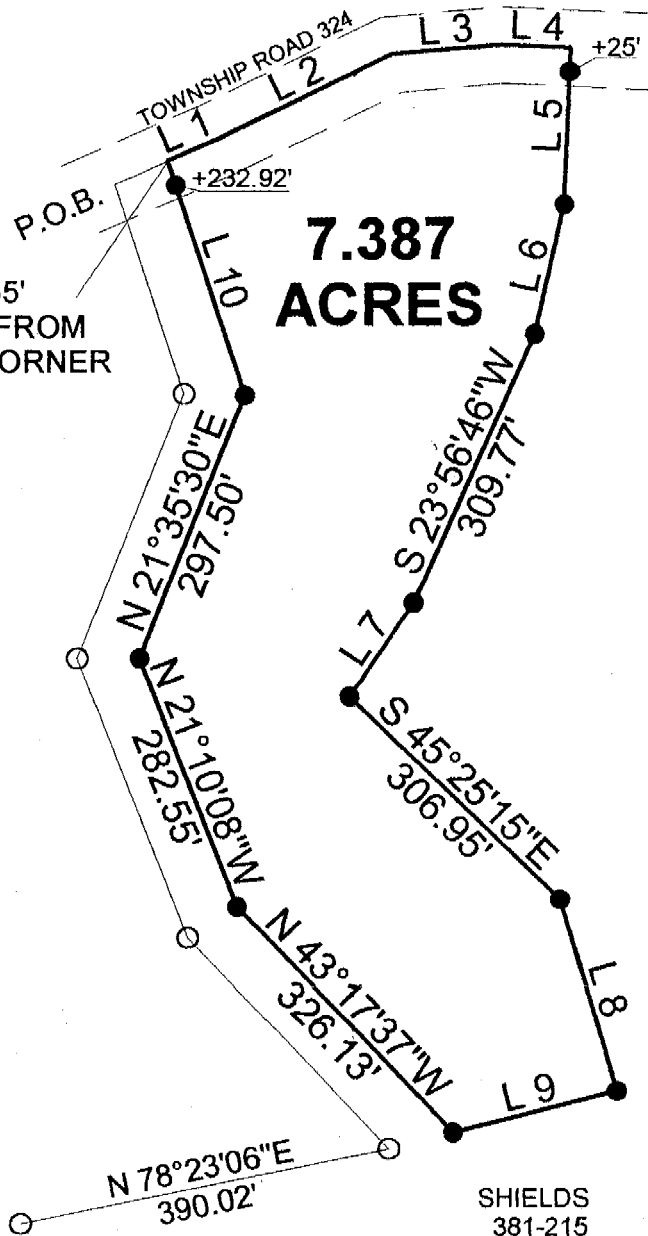
Subject to all easements and right-of-ways of record.
All iron pins set are 5/8 inch x 30 inch long rebar.

The above description is based on a field survey completed December 1997 By: John M. Branner P.S. 6805, 12500 N. Peach Ridge Road, Athens, Ohio 45701 (614) 592-5778

32

P.O.B.
 BEARS SOUTH 779.65'
 AND WEST 2759.73' FROM
 THE NORTH-EAST CORNER
 OF FRACTION #1

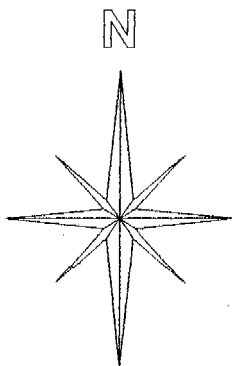
SHIELDS
 381-215



SHIELDS
 381-215

SHIELDS
 381-215

Line	Bearing	Distance
1	N 66°18'36"E	57.11'
2	N 63°57'50"E	200.74'
3	N 85°02'44"E	114.85'
4	S 87°14'31"E	71.64'
5	S 2°15'01"W	163.91'
6	S 12°34'14"W	139.86'
7	S 33°55'05"W	118.48'
8	S 16°08'13"E	210.21'
9	S 75°47'22"W	175.10'
10	N 18°09'42"W	260.02'



Graphic Scale



1 INCH = 200 FEET

○ = IRON PIN FOUND

● = IRON PIN SET

BEARINGS ARE BASED ON A
 SURVEY OF A 10.23 ACRE TRACT
 AND ARE USED TO DENOTE
 ANGLES ONLY

Description checked for
 Mathematical Accuracy
 ATHENS COUNTY
 ENGINEER'S OFFICE
 BY: E. Blauer
 DATE: 2-2-98

SURVEY OF A 7.387 ACRE TRACT
 FRACTION 1, SECTION 14, T. 10, R. 14,
 DOVER TOWNSHIP, ATHENS COUNTY,
 OHIO
 SURVEYED DECEMBER 1997

JOHN M. BRANNER P.S. 6805
 12500 N. PEACH RIDGE ROAD,
 ATHENS, OHIO (740) 592-5778

33
 Don # 14