

PLAT of Survey

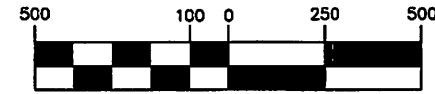
Situate in Fractions 6 and 11, Auditor's Sections 15 and 21, Township 10, Range 14, Ohio Company Purchase; Dover Township, Athens County, Ohio.

Being a 134.020 acre parcel as described in Thomas M. Fitzmaurice's O.R. 299 Pg. 1893 and O.R. 299 Pg. 1897.

Frederick W. and Sarah M. Farson
O.R. 412 Pg. 754
7.25 Ac.

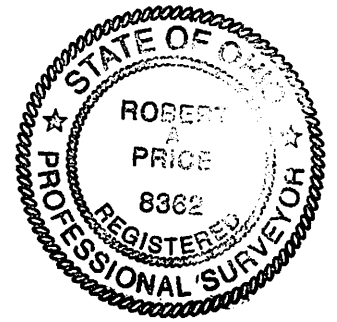
Sunday Creek Acres, LLC.
O.R. 388 Pg. 1719
Third Tract - 81.22 Ac.

Thomas M. Fitzmaurice
O.R. 299 Pg. 1897
Tract One
35.81 Ac.
Description Checked for
Mathematical Accuracy
Athens County
ENGINEER'S OFFICE
R. Blause
1-2-08



1 inch = 500 ft.

Sunday Creek Acres, LLC.
O.R. 388 Pg. 1719
First Tract - 72.56 Ac.



I hereby certify that this Plat and Notes are correct as surveyed by me in December 2007.

Robert A. Price PS 8362

Notes:
Basis of Bearings being the south line of Fraction 11 Section 15 and 21 being N86°45'00"W and is to be used to determine angular relationships only.

Iron Pins Set are 5/8" X 30" steel rebar with plastic caps stamped 'Price PS 8362'.

Subject to all legal easements and rights of way.

Conkling & Wineland, LLC.
O.R. 398 Pg. 1187
90.30 Ac.

David Clark Summers and Hollis Summers III
O.R. 22 Pg. 66
69.23 Ac.

2094.dwg
28 Dec 2007

Thomas M. Fitzmaurice
O.R. 200 Pg. 772
2.00 Ac.

Virginia L. Lucas
O.R. 16 Pg. 455
1.03 Ac.

Thomas M. Fitzmaurice
O.R. 299 Pg. 1893
Second Tract
1.27 Ac.

Patricia Ann and Frederick L. Cunningham
O.R. 203 Pg. 958
84.88 Ac.

Thomas M. Fitzmaurice
O.R. 299 Pg. 1893
First Tract
49.16 Ac.

William Renz and Claudia Sheehan
D.R. 380 Pg. 323
25.59 Ac.

Virginia Sustarsic
D.R. 380 Pg. 299
22.453 Ac.

T.R. 607 Gardner Ln.

S.R. 13

Bailey Run

Sunday Creek

Sunday Creek

References:

Deeds Listed
Tax Maps
Athens County GIS
G. Wright PS 6535, June 1997 Survey.
Athens Co. Surveyor Plats Vols. 1-161, 3-63, 6-230, 6-243, 7-17 and 8-322.

- Legend**
- Stone Fd.
 - ⊙ Iron Pipe Fd.
 - Iron Pin Fd.
 - Iron Pin Set
 - X Fence

Price Co. Land Surveys, LLC.
Athens, Ohio 740.592.9966

LINE	LENGTH	BEARING
L1	44.28	N36°02'56"W
L2	250.83	N83°52'17"E
L3	236.16	S83°41'22"E
L4	123.53	N70°26'50"E
L5	159.95	N37°59'59"E
L6	194.43	N68°26'17"E
L7	278.99	N81°19'27"E
L8	162.40	S86°07'50"E
L9	250.64	N72°38'25"E
L10	174.30	N40°00'37"E
L11	235.87	N33°58'44"E
L12	243.69	N47°56'52"E
L13	101.32	N66°11'04"E
L14	109.41	N52°23'17"E
L15	177.32	S51°12'41"E

Sec 21

Sec 15

Fra 11-Sec 15&21
Fra 11-Sec 15

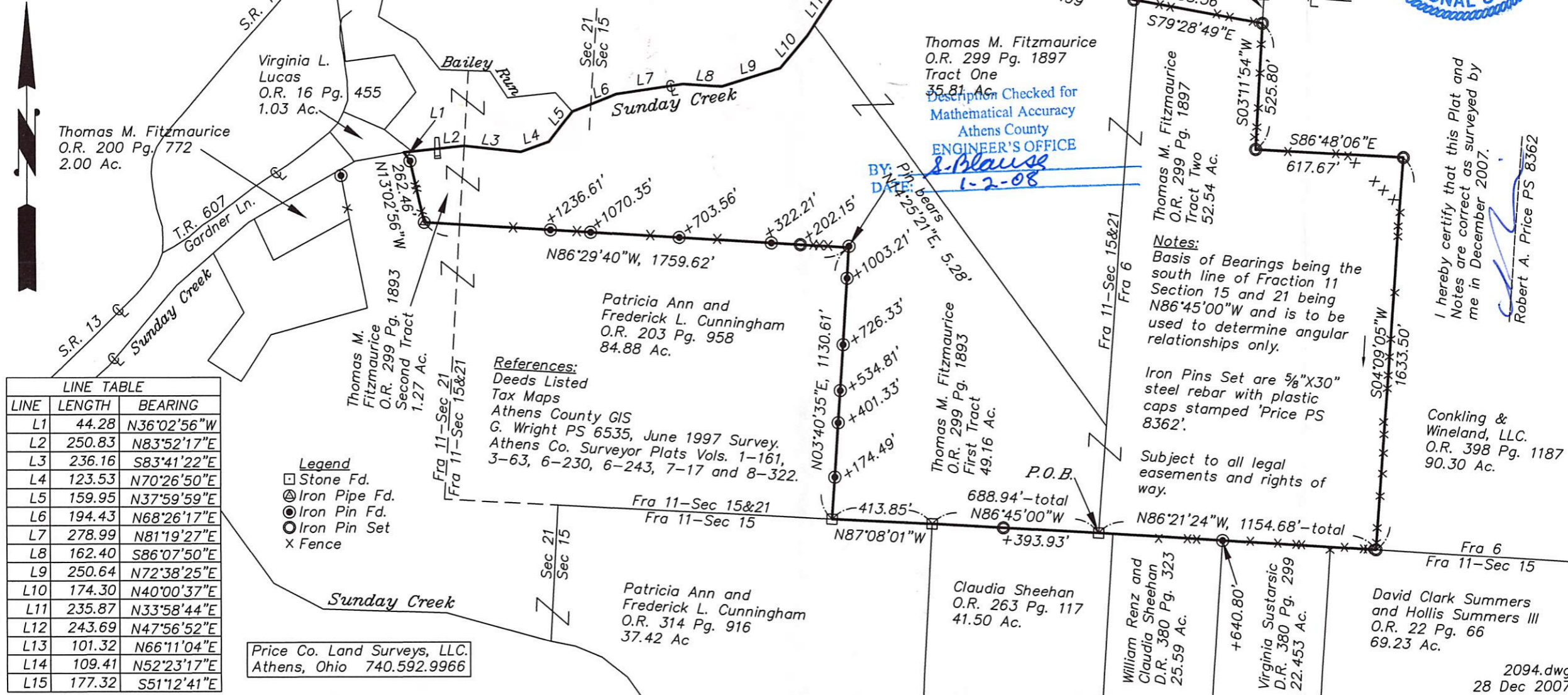
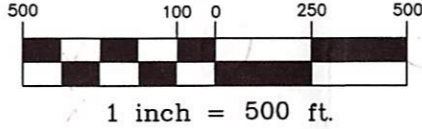
Fra 11-Sec 15&21
Fra 6

Fra 6
Fra 11-Sec 15

PLAT of Survey

Situate in Fractions 6 and 11, Auditor's Sections 15 and 21, Township 10, Range 14, Ohio Company Purchase; Dover Township, Athens County, Ohio.

Being a 134.020 acre parcel as described in Thomas M. Fitzmaurice's O.R. 299 Pg. 1893 and O.R. 299 Pg. 1897.



LINE	LENGTH	BEARING
L1	44.28	N36°02'56"W
L2	250.83	N83°52'17"E
L3	236.16	S83°41'22"E
L4	123.53	N70°26'50"E
L5	159.95	N37°59'59"E
L6	194.43	N68°26'17"E
L7	278.99	N81°19'27"E
L8	162.40	S86°07'50"E
L9	250.64	N72°38'25"E
L10	174.30	N40°00'37"E
L11	235.87	N33°58'44"E
L12	243.69	N47°56'52"E
L13	101.32	N66°11'04"E
L14	109.41	N52°23'17"E
L15	177.32	S51°12'41"E

- Legend**
- Stone Fd.
 - ⊙ Iron Pipe Fd.
 - ⊙ Iron Pin Fd.
 - ⊙ Iron Pin Set
 - x Fence

Price Co. Land Surveys, LLC.
Athens, Ohio 740.592.9966

References:
Deeds Listed
Tax Maps
Athens County GIS
G. Wright PS 6535, June 1997 Survey.
Athens Co. Surveyor Plats Vols. 1-161,
3-63, 6-230, 6-243, 7-17 and 8-322.

BY: *P. Blause*
DATE: 1-2-08

Thomas M. Fitzmaurice
O.R. 299 Pg. 1897
Tract One
35.81 Ac.
Checked for
Mathematical Accuracy
Athens County
ENGINEER'S OFFICE



I hereby certify that this Plat and Notes are correct as surveyed by me in December 2007.
Robert A. Price PS 8362

Notes:
Basis of Bearings being the south line of Fraction 11 Section 15 and 21 being N86°45'00"W and is to be used to determine angular relationships only.

Iron Pins Set are 5/8"X30" steel rebar with plastic caps stamped 'Price PS 8362'.

Subject to all legal easements and rights of way.

Conkling & Wineland, LLC.
O.R. 398 Pg. 1187
90.30 Ac.

David Clark Summers and Hollis Summers III
O.R. 22 Pg. 66
69.23 Ac.