

DESCRIPTION OF A 0.53 ACRE TRACT

Situated in Section 18, T.10,R.14, Dover Township, Athens County, Ohio and being more particularly described as follows:

Commencing at the South-west corner of Section 18, thence, North 35 Degrees 52 Minutes 35 Seconds East, 2144.31 feet to a point; thence, North 09 Degrees 32 Minutes 35 Seconds East, 2519.90 feet to a point thence, South 75 Degrees 45 Minutes 10 Seconds East, 585.93 feet to a point; thence, South 12 Degrees 24 Minutes 48 Seconds East, 1066.14 feet to an iron pin at the South-west corner of a 7.51 acre tract as recorded in Volume 6, Page 507 of the Official Records of Athens County; thence, along Grantor's North-line South 85 Degrees 20 Minutes 40 Seconds East, 288.34 feet to a railroad spike found in County Road 93 and being the point of beginning for the tract of land herein described:

Thence, along said road, South 05 Degrees 24 Minutes 42 Seconds West, 192.11 feet to a point; thence, leaving said road, North 83 Degrees 57 Minutes 40 Seconds West, 120.00 feet to an iron pin set passing an iron pin set at 36.84 feet; thence, North 05 Degrees 24 Minutes 47 Seconds East, 189.21 feet to an iron pin set in Grantor's North-line; thence, along said line, South 85 Degrees 20 minutes 40 Seconds East, 120.00 feet to the point of beginning and containing 0.53 acres.

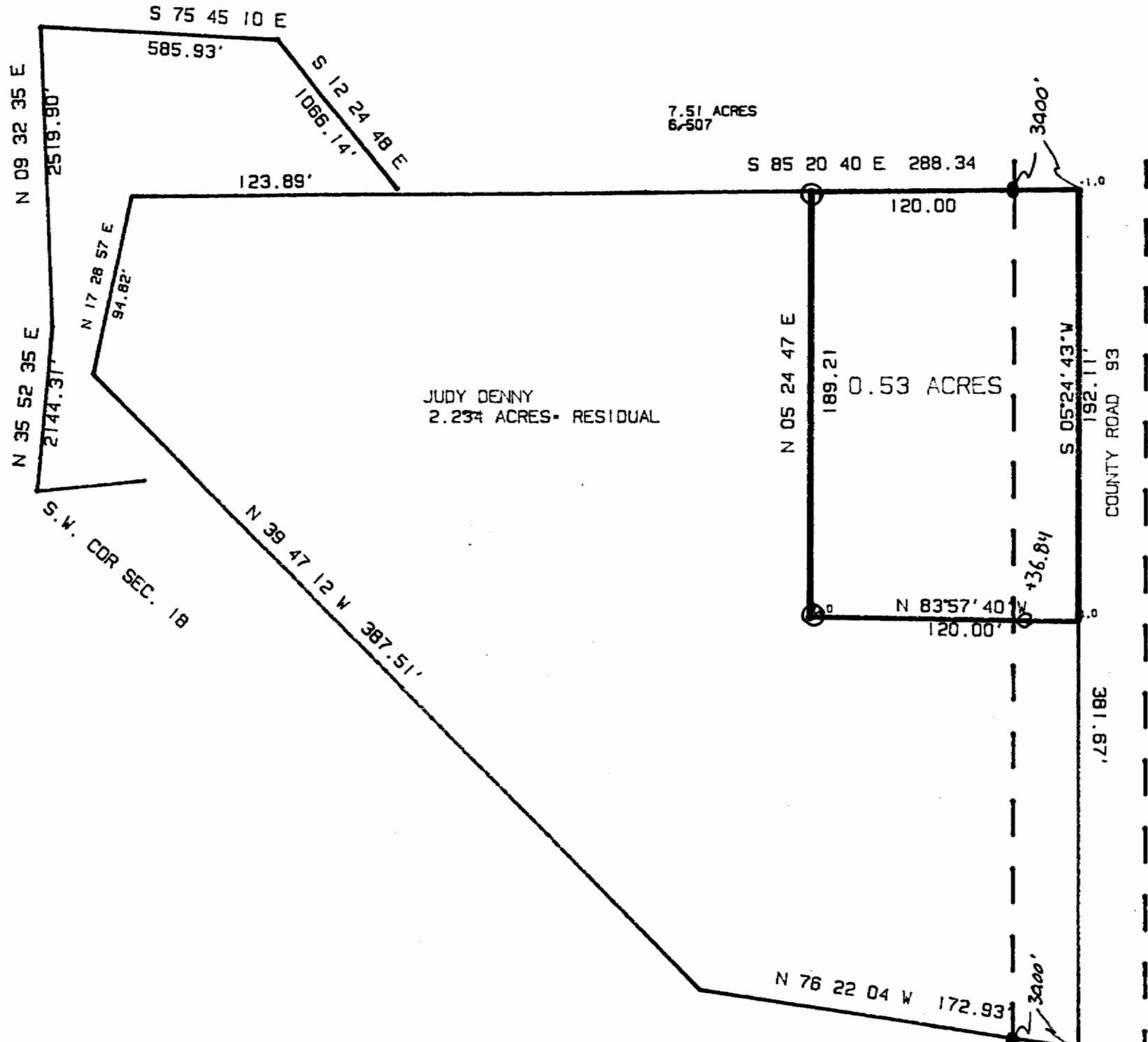
Subject to all easements and rights of way of record.

John M. Branner P. S. 6805

Description checked for
Mathematical Accuracy
ATHENS COUNTY
ENGINEER'S OFFICE

BY: [Signature]
DATE: 4-7-97

Sec 18, T10, R14
Dover Twp



7.51 ACRES
6-507

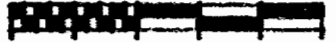
JUDY DENNY
2.234 ACRES- RESIDUAL

0.53 ACRES

SURVEY OF A 0.53 ACRE TRACT
IN SECTION 18, T.10, R.14,
DOVER TOWNSHIP, ATHENS CO., O.
SURVEYED SEPTEMBER 1992

John M. Branner
JOHN M. BRANNER P.S. 6805
12500 N. PEACH RIDGE ROAD
ATHENS, OHIO 592-5778

Description checked for
Mathematical Accuracy
ATHENS COUNTY
ENGINEERS/OFFICE
BY: *[Signature]*
DATE: *10/29/92*



SCALE 1 INCH = 60 FEET

- = IRON PIN SET
- = IRON PIN FOUND

2