



C. Tim Newman  
Professional Surveyor

66 Elmwood Place  
Athens, Ohio 45701

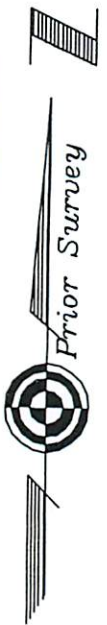
(740) 594-1884  
(740) 591-5269

Plat of Survey of 0.136 Acres  
Sited in The Village of Chauncey,  
Section 20, Town 10, Range 14, Dover  
Township, Athens County, Ohio  
Surveyed August 2013

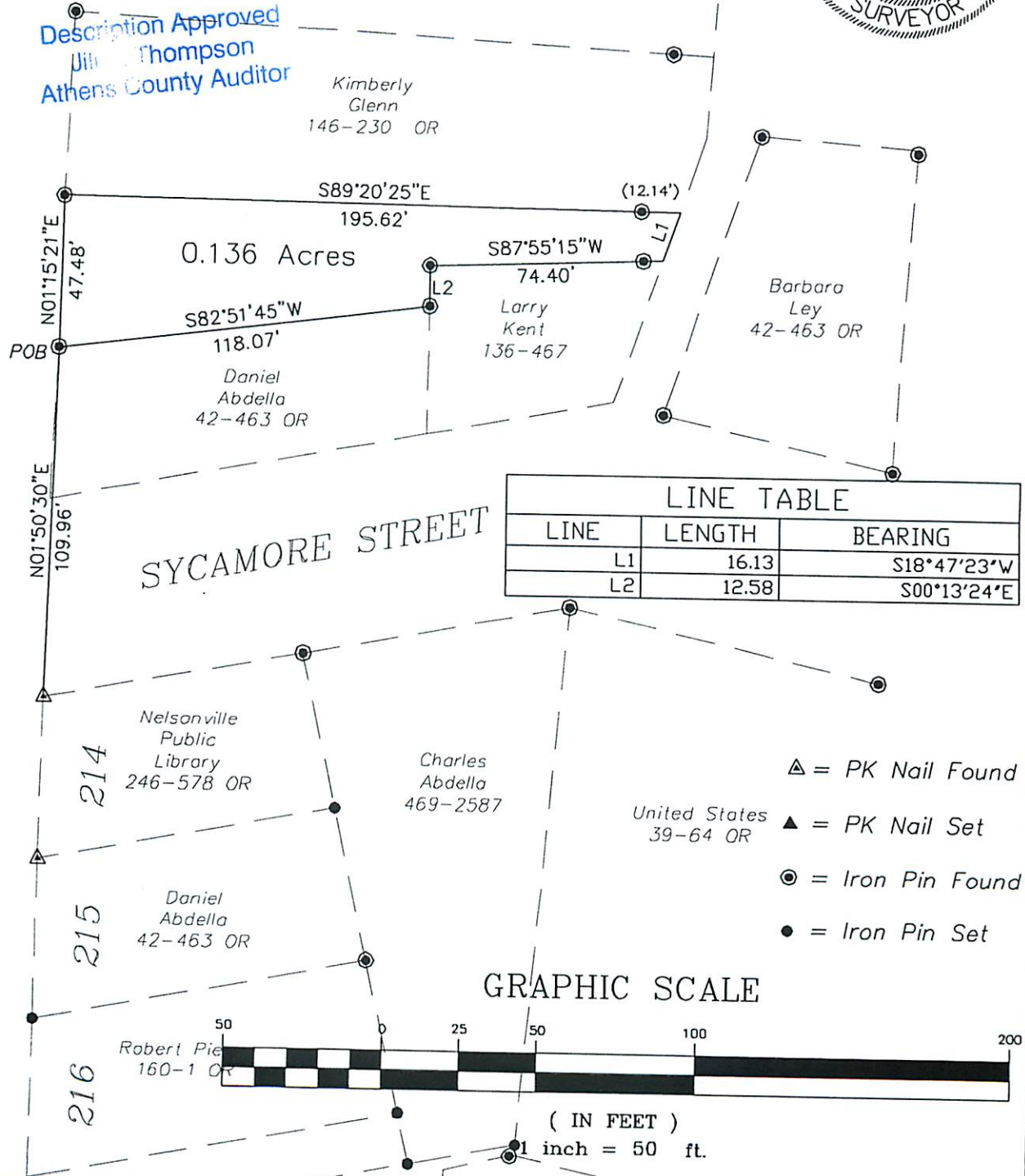
Description Checked for  
Mathematical Accuracy  
Athens County  
ENGINEER'S OFFICE

BY: *Boader White*  
DATE: 8/8/13

*Charles T. Newman*  
Charles T. Newman PS



Prior Survey



LINE TABLE		
LINE	LENGTH	BEARING
L1	16.13	S18°47'23"W
L2	12.58	S00°13'24"E

- ▲ = PK Nail Found
- ▲ = PK Nail Set
- = Iron Pin Found
- = Iron Pin Set

GRAPHIC SCALE



( IN FEET )  
1 inch = 50 ft.

Exhibit A

Description of 0.136Acres

Description of a parcel of land situated in The Village of Chauncey, Section 20, Town 10, Range 14, Dover Township, Athens County, Ohio and being more fully described as follows:

Commencing at a PK nail found at the northwest corner of Lot 214 as delineated on Chauncey Plat;  
Thence North 01°50'30"East 109.96 feet along the east line of Converse Street to a one inch steel pipe found at the point of beginning of the tract herein described;

Thence North 01°15'21"East 47.48 feet along the east line of Converse Street to a one inch steel pipe found;

Thence South 89°20'25"East 195.62 feet along a common line to (Rodehaver 483-757 OR) and (Glenn 146-230 OR) to a point on the west line of an alley, passing a one inch steel pipe found at 183.48 feet;

Thence South 18°47'23"West 16.13 along the west line of the alley to a one inch steel pipe found;

Thence South 87°55'15"West 74.40 feet along a common line to (Rodehaver 483-757 OR) and (Kent 136-467) to a one inch steel pipe found;

Thence South 00°13'24"East 12.58 feet along a common line to (Rodehaver 483-757 OR) and (Kent 136-467) to a one inch steel pipe found;


Thence South 82°51'45"West 118.07 feet along a common line to (Rodehaver 483-757 OR) and (Abdella 42-463 OR) to the point and place of beginning containing 0.136 acres.

Deed Reference: Official Record of the Athens County Recorder's Office Book 483, Page 757


Tax Identification References: Athens County Auditor Numbers  
G020030004000, G020030003900, G020030003800

Iron Pins Set are: 5/8"x30" steel capped "NEWMAN 8043"

Subject to all Easements, Rights-of-Way and Covenants of Record

  
Charles T. Newman  
Registered Professional Surveyor 8043  
66 Elmwood Place  
Athens, Ohio 45701  
August 8, 2013



Description Checked for  
Mathematical Accuracy  
Athens County  
ENGINEER'S OFFICE  
BY:   
DATE: 8/8/13

Description Approved  
Jill A. Thompson  
Athens County Auditor