

48.20 ACRE PARCEL

Situated in Dover Township, Athens County, State of Ohio, and being in Section 35, Town 10 North, Range 14 West of the Ohio Company's Purchase and being described as follows: beginning at a cornerstone found at the northeast corner of said Section 35

thence S 3° 44' 31" W, a distance of 1322.12' to an iron pin set;

thence N 59° 30' 34" W, a distance of 152.25' to an iron pin set;

thence S 3° 44' 31" W, a distance of 330.00' to a point in centerline of County Road 29, passing an iron pin set at 300.00' for reference;

thence the following five (5) calls along the centerline of said County Road 29

N 60° 50' 30" W, a distance of 64.62'

N 60° 15' 51" W, a distance of 66.80'

N 53° 58' 49" W, a distance of 46.30'

N 46° 12' 44" W, a distance of 36.54'

N 38° 37' 43" W, a distance of 49.92'

thence S 52° 18' 33" W, a distance of 533.77' to an iron pin set, passing an iron pin set at 30.00' for reference;

thence S 42° 23' 45" E, a distance of 250.52' to an iron pin set, passing a steel fencepost found at 199.31';

thence S 86° 51' 04" W, a distance of 741.23' to an iron pin set;

thence N 3° 30' 00" E, a distance of 1034.34' to an iron pin set, passing an iron pin set at 38.70' for reference;

thence N 59° 22' 10" E, a distance of 513.14' to a point in the centerline of County Road 29, passing an iron pin set at 483.14' for reference;

thence the following eleven (11) calls along the centerline of said County Road 29

N 40° 47' 54" W, a distance of 42.07'

N 40° 50' 00" W, a distance of 63.55'

N 37° 04' 55" W, a distance of 43.98'

N 31° 19' 04" W, a distance of 40.64'

N 27° 39' 47" W, a distance of 79.55'

N 22° 17' 03" W, a distance of 70.91'

N 19° 05' 50" W, a distance of 81.17'

N 19° 01' 02" W, a distance of 132.01'

N 21° 45' 58" W, a distance of 89.97'

N 24° 08' 54" W, a distance of 64.54'

N 29° 24' 51" W, a distance of 78.19'

N 39° 42' 55" W, a distance of 50.47'

thence N 3° 30' 00" E, a distance of 15.96' to a point;

thence S 86° 33' 32" E, a distance of 1319.24' to the POINT OF BEGINNING, passing an iron pin set at 58.82' for reference, said described tract containing 48.20 Acres, more or less, excepting all legal utility easements and rights of way.

Reference Deed: Official Records Volume 435, Page 1179

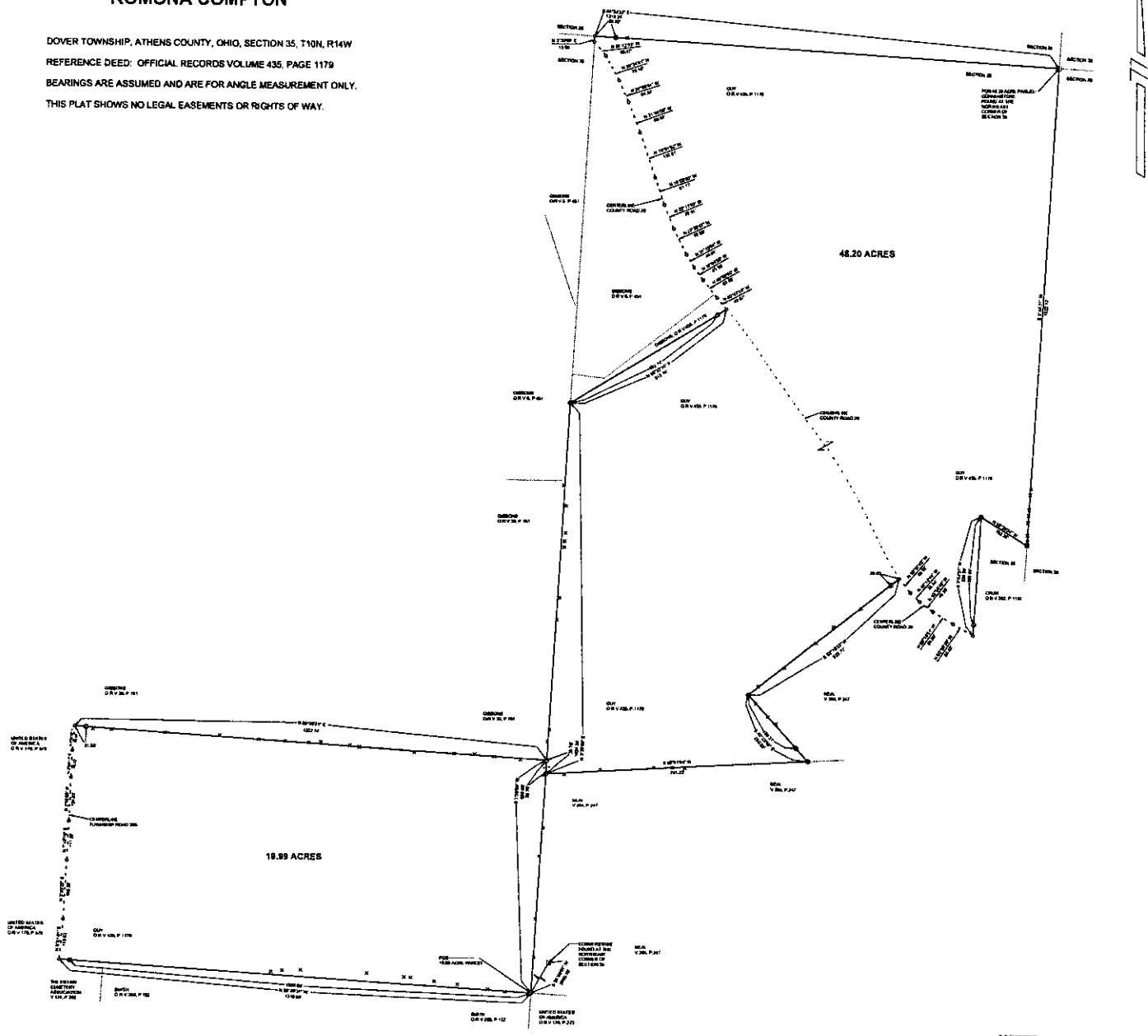
Bearings are assumed and are for angle measurement only.

The above description is based on a survey in March and April 2009 by E & E Borderline Surveying, Robert R. Eason, Ohio P.S. No. 7033.

Description Checked for
Mathematical Accuracy
Athens County
ENGINEER'S OFFICE
BY: S. Blanes
DATE: 10-28-09

**PLAT OF PARCELS SURVEYED
FOR
ROMONA COMPTON**

DOVER TOWNSHIP, ATHENS COUNTY, OHIO, SECTION 35, T10N, R14W
 REFERENCE DEED: OFFICIAL RECORDS VOLUME 435, PAGE 1179
 BEARINGS ARE ASSUMED AND ARE FOR ANGLE MEASUREMENT ONLY.
 THIS PLAT SHOWS NO LEGAL EASEMENTS OR RIGHTS OF WAY.

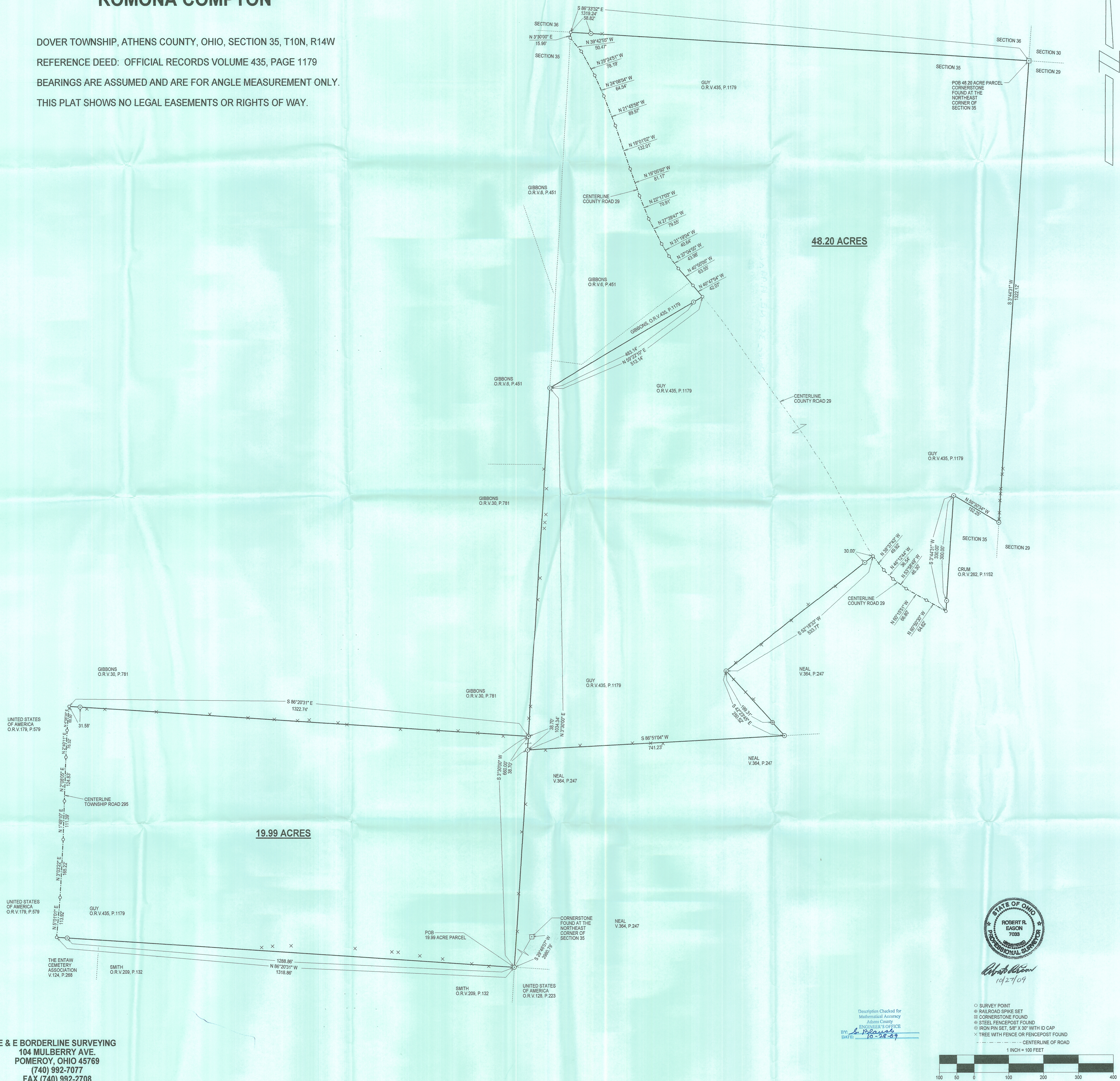


U.S. GEOLOGICAL SURVEY
 1225 BROADWAY AVE.
 WASHINGTON, D.C. 20515
 (202) 835-7070
 FAX (202) 835-7070

0 SURVEY POINT
 1 1/4" = 100 FEET
 2 1/4" = 100 FEET
 3 1/4" = 100 FEET
 4 1/4" = 100 FEET
 5 1/4" = 100 FEET
 6 1/4" = 100 FEET
 7 1/4" = 100 FEET
 8 1/4" = 100 FEET
 9 1/4" = 100 FEET
 10 1/4" = 100 FEET
 11 1/4" = 100 FEET
 12 1/4" = 100 FEET
 13 1/4" = 100 FEET
 14 1/4" = 100 FEET
 15 1/4" = 100 FEET
 16 1/4" = 100 FEET
 17 1/4" = 100 FEET
 18 1/4" = 100 FEET
 19 1/4" = 100 FEET
 20 1/4" = 100 FEET
 21 1/4" = 100 FEET
 22 1/4" = 100 FEET
 23 1/4" = 100 FEET
 24 1/4" = 100 FEET
 25 1/4" = 100 FEET
 26 1/4" = 100 FEET
 27 1/4" = 100 FEET
 28 1/4" = 100 FEET
 29 1/4" = 100 FEET
 30 1/4" = 100 FEET
 31 1/4" = 100 FEET
 32 1/4" = 100 FEET
 33 1/4" = 100 FEET
 34 1/4" = 100 FEET
 35 1/4" = 100 FEET
 36 1/4" = 100 FEET
 37 1/4" = 100 FEET
 38 1/4" = 100 FEET
 39 1/4" = 100 FEET
 40 1/4" = 100 FEET
 41 1/4" = 100 FEET
 42 1/4" = 100 FEET
 43 1/4" = 100 FEET
 44 1/4" = 100 FEET
 45 1/4" = 100 FEET
 46 1/4" = 100 FEET
 47 1/4" = 100 FEET
 48 1/4" = 100 FEET
 49 1/4" = 100 FEET
 50 1/4" = 100 FEET
 51 1/4" = 100 FEET
 52 1/4" = 100 FEET
 53 1/4" = 100 FEET
 54 1/4" = 100 FEET
 55 1/4" = 100 FEET
 56 1/4" = 100 FEET
 57 1/4" = 100 FEET
 58 1/4" = 100 FEET
 59 1/4" = 100 FEET
 60 1/4" = 100 FEET
 61 1/4" = 100 FEET
 62 1/4" = 100 FEET
 63 1/4" = 100 FEET
 64 1/4" = 100 FEET
 65 1/4" = 100 FEET
 66 1/4" = 100 FEET
 67 1/4" = 100 FEET
 68 1/4" = 100 FEET
 69 1/4" = 100 FEET
 70 1/4" = 100 FEET
 71 1/4" = 100 FEET
 72 1/4" = 100 FEET
 73 1/4" = 100 FEET
 74 1/4" = 100 FEET
 75 1/4" = 100 FEET
 76 1/4" = 100 FEET
 77 1/4" = 100 FEET
 78 1/4" = 100 FEET
 79 1/4" = 100 FEET
 80 1/4" = 100 FEET
 81 1/4" = 100 FEET
 82 1/4" = 100 FEET
 83 1/4" = 100 FEET
 84 1/4" = 100 FEET
 85 1/4" = 100 FEET
 86 1/4" = 100 FEET
 87 1/4" = 100 FEET
 88 1/4" = 100 FEET
 89 1/4" = 100 FEET
 90 1/4" = 100 FEET
 91 1/4" = 100 FEET
 92 1/4" = 100 FEET
 93 1/4" = 100 FEET
 94 1/4" = 100 FEET
 95 1/4" = 100 FEET
 96 1/4" = 100 FEET
 97 1/4" = 100 FEET
 98 1/4" = 100 FEET
 99 1/4" = 100 FEET
 100 1/4" = 100 FEET

PLAT OF PARCELS SURVEYED FOR ROMONA COMPTON

DOVER TOWNSHIP, ATHENS COUNTY, OHIO, SECTION 35, T10N, R14W
 REFERENCE DEED: OFFICIAL RECORDS VOLUME 435, PAGE 1179
 BEARINGS ARE ASSUMED AND ARE FOR ANGLE MEASUREMENT ONLY.
 THIS PLAT SHOWS NO LEGAL EASEMENTS OR RIGHTS OF WAY.



E & E BORDERLINE SURVEYING
 104 MULBERRY AVE.
 POMEROY, OHIO 45769
 (740) 992-7077
 FAX (740) 992-2708

Description Checked for
 Mathematical Accuracy
 Athens County
 ENGINEER'S OFFICE
 BY: *S. P. Adams*
 DATE: 10-28-09



Robert R. Eason
 10/27/09

- SURVEY POINT
- # RAILROAD SPIKE SET
- ⊙ CORNERSTONE FOUND
- ⊕ STEEL FENCEPOST FOUND
- ⊖ IRON PIN SET, 5/8" X 30" WITH ID CAP
- × TREE WITH FENCE OR FENCEPOST FOUND
- CENTERLINE OF ROAD

