

68.58 ACRE PARCELInstrument  
200900002747 DRBook Page  
435 1176

Situated in Dover Township, Athens County, State of Ohio, and being in Section 35, Town 10 North, Range 14 West of the Ohio Company's Purchase and being described as follows: beginning at a cornerstone found at the northeast corner of said Section 35

thence S 3° 44' 31" W, a distance of 1322.12' to an iron pin set;

thence N 59° 30' 34" W, a distance of 152.25' to an iron pin set;

thence S 3° 44' 31" W, a distance of 330.00' to an point in centerline of County Road 29, passing an iron pin set at 300.00' for reference;

thence the following five (5) calls along the centerline of said County Road 29

N 60° 50' 30" W, a distance of 64.62'

N 60° 15' 51" W, a distance of 66.80'

N 53° 58' 49" W, a distance of 46.30'

N 46° 12' 44" W, a distance of 36.54'

N 38° 37' 43" W, a distance of 49.92'

thence S 52° 18' 33" W, a distance of 533.77' to an iron pin set, passing an iron pin set at 30.00' for reference;

thence S 42° 23' 45" E, a distance of 250.52' to an iron pin set, passing a steel fencepost found at 199.31';

thence S 86° 51' 04" W, a distance of 741.23' to an iron pin set;

thence S 3° 30' 00" W, a distance of 621.30' to an iron pin set;

thence N 86° 20' 31" W, a distance of 1318.86' to a point in the centerline of Township Road 295, passing an iron pin set at 1288.86' for reference;

thence the following six (6) calls along the centerline of said Township Road 295

N 5° 01' 01" E, a distance of 113.92'

N 3° 03' 22" E, a distance of 165.22'

N 1° 49' 10" E, a distance of 111.39'

N 2° 08' 05" E, a distance of 124.83'

N 2° 40' 11" E, a distance of 76.32'

N 4° 56' 38" E, a distance of 68.50'

thence S 86° 20' 31" E, a distance of 1322.74' to an iron pin set;

thence N 3° 30' 00" E, a distance of 1074.61' to an iron pin set;

thence S 83° 00' 00" E, a distance of 90.00' to an iron pin set;

thence N 53° 00' 00" E, a distance of 390.32' to a point in the centerline of County Road 29, passing a railroad spike set at 360.32' for reference;

thence the following eleven (11) calls along the centerline of said County Road 29

N 40° 50' 00" W, a distance of 51.04'  
N 37° 04' 55" W, a distance of 43.98'  
N 31° 19' 04" W, a distance of 40.64'  
N 27° 39' 47" W, a distance of 79.55'  
N 22° 17' 03" W, a distance of 70.91'  
N 19° 05' 50" W, a distance of 81.17'  
N 19° 01' 02" W, a distance of 132.01'  
N 21° 45' 58" W, a distance of 89.97'  
N 24° 08' 54" W, a distance of 64.54'  
N 29° 24' 51" W, a distance of 78.19'  
N 39° 42' 55" W, a distance of 50.47'

thence N 3° 30' 00" E, a distance of 15.96' to a point;

thence S 86° 33' 32" E, a distance of 1319.24' to the POINT OF BEGINNING, passing an iron pin set at 58.82' for reference, said described tract containing 68.58 Acres, more or less, excepting all legal utility easements and rights of way.

Reference Deed:

24.57 ACRES (SURVEY) 20.95 ACRES (DEED) FROM OFFICIAL RECORDS VOLUME  
315, PAGE 1670, THIRD TRACT

4.02 ACRES (SURVEY) 4.00 ACRES (DEED) OFFICIAL RECORDS FROM VOLUME 315,  
PAGE 1670, FIFTH TRACT

8.64 ACRE (SURVEY) 20.00 ACRES (DEED) FROM OFFICIAL RECORDS VOLUME 315,  
PAGE 1670, SECOND TRACT

11.36 ACRES (SURVEY) 11.42 ACRES (DEED) FROM OFFICIAL RECORDS VOLUME  
315, PAGE 1670, FIRST TRACT

19.99 ACRES (SURVEY) 20.00 ACRES (DEED) FROM OFFICIAL RECORDS VOLUME  
315, PAGE 1670, FOURTH TRACT

68.58 ACRES TOTAL (SURVEY) 76.37 (DEED)

Bearings are assumed and are for angle measurement only.

The above description is based on a survey in March and April 2009 by E & E Borderline Surveying,  
Robert R. Eason, Ohio P.S. No. 7033.

Description Checked for  
Mathematical Accuracy  
Athens County  
ENGINEER'S OFFICE  
BY: S. Blouse  
DATE: 4-16-09

*Gene Guy*

# PLAT OF 68.58 ACRE PARCEL SURVEYED FOR ROMONA COMPTON

Instrument  
20090002747 OR

Book Page  
435 1178

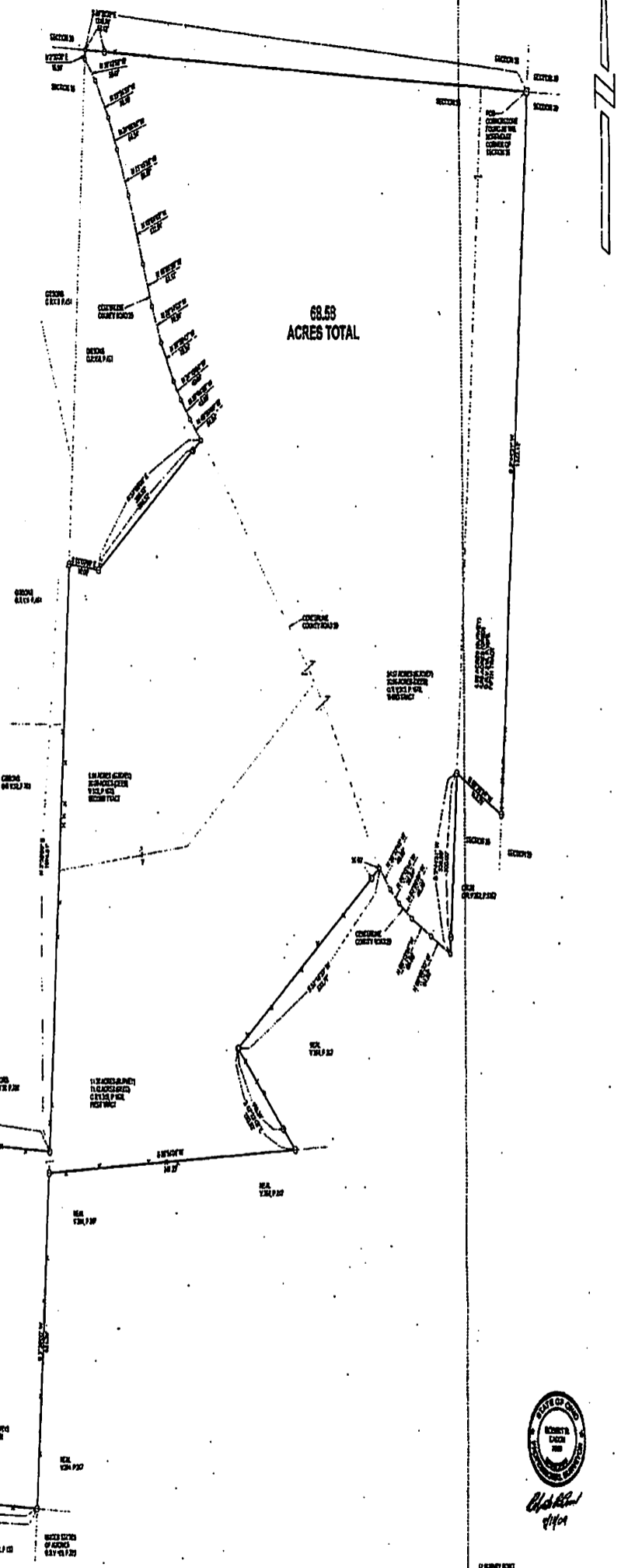
DOVER TOWNSHIP, ATHENS COUNTY, OHIO, SECTION 36, T10N, R14W

REFERENCE DEED:

- 24.57 ACRES (SURVEY) 23.95 ACRES (DEED) FROM OFFICIAL RECORDS VOLUME 315, PAGE 1670, THIRD TRACT
- 4.02 ACRES (SURVEY) 4.00 ACRES (DEED) OFFICIAL RECORDS FROM VOLUME 315, PAGE 1670, FIFTH TRACT
- 8.84 ACRES (SURVEY) 20.00 ACRES (DEED) FROM OFFICIAL RECORDS VOLUME 315, PAGE 1670, SECOND TRACT
- 11.38 ACRES (SURVEY) 11.42 ACRES (DEED) FROM OFFICIAL RECORDS VOLUME 315, PAGE 1670, FIRST TRACT
- 19.99 ACRES (SURVEY) 20.00 ACRES (DEED) FROM OFFICIAL RECORDS VOLUME 315, PAGE 1670, FOURTH TRACT
- 68.58 ACRES TOTAL (SURVEY) 76.37 (DEED)

BEARINGS ARE ASSUMED AND ARE FOR ANGLE MEASUREMENT ONLY.

THIS PLAT SHOWS NO LEGAL EASEMENTS OR RIGHTS OF WAY.



E & E BORDERLINE SURVEYING  
154 MULBERRY AVE.  
POWERSY, OHIO 45769  
(740) 932-3977  
FAX (740) 932-2768



- BOUND POINT
- BOUNDARY LINE
- CONSTRUCTION FROM
- FIELD RECORDS
- DETERMINED BY SURVEYOR
- THIS PLAT SHOWS NO LEGAL EASEMENTS OR RIGHTS OF WAY
- ENCLOSURE OF ROAD



# PLAT OF 68.58 ACRE PARCEL SURVEYED FOR ROMONA COMPTON

DOVER TOWNSHIP, ATHENS COUNTY, OHIO, SECTION 35, T10N, R14W

**REFERENCE DEED:**

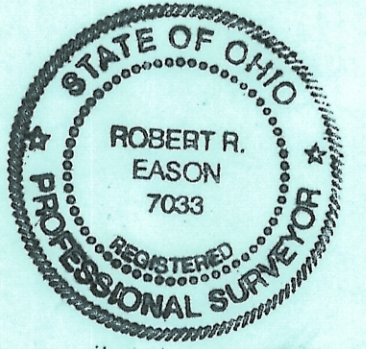
- 24.57 ACRES (SURVEY) 20.95 ACRES (DEED) FROM OFFICIAL RECORDS VOLUME 315, PAGE 1670, THIRD TRACT
- 4.02 ACRES (SURVEY) 4.00 ACRES (DEED) OFFICIAL RECORDS FROM VOLUME 315, PAGE 1670, FIFTH TRACT
- 8.64 ACRE (SURVEY) 20.00 ACRES (DEED) FROM OFFICIAL RECORDS VOLUME 315, PAGE 1670, SECOND TRACT
- 11.36 ACRES (SURVEY) 11.42 ACRES (DEED) FROM OFFICIAL RECORDS VOLUME 315, PAGE 1670, FIRST TRACT
- 19.99 ACRES (SURVEY) 20.00 ACRES (DEED) FROM OFFICIAL RECORDS VOLUME 315, PAGE 1670, FOURTH TRACT
- 68.58 ACRES TOTAL (SURVEY) 76.37 (DEED)

BEARINGS ARE ASSUMED AND ARE FOR ANGLE MEASUREMENT ONLY.

THIS PLAT SHOWS NO LEGAL EASEMENTS OR RIGHTS OF WAY.

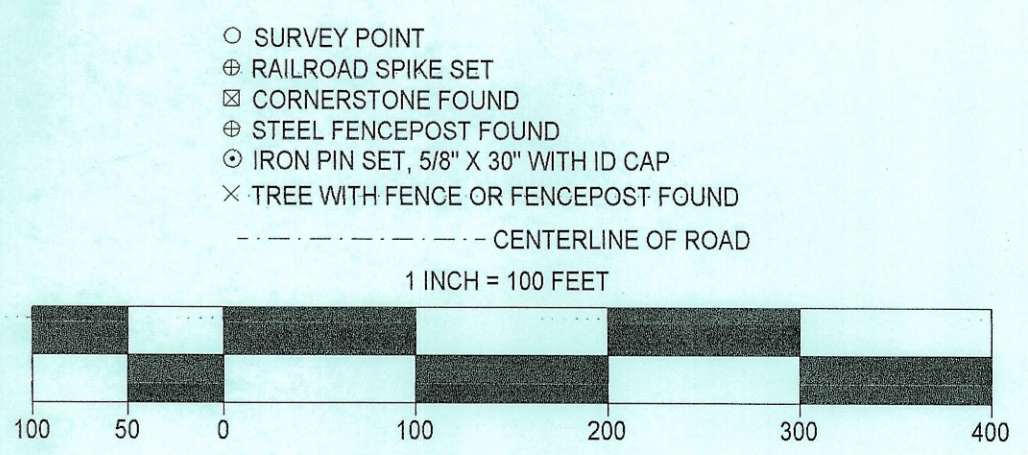


**68.58  
ACRES TOTAL**



*Robert R. Eason*  
4/14/09

Description Checked for  
Mathematical Accuracy  
Athens County  
ENGINEER'S OFFICE  
BY: *[Signature]*  
DATE: 4-16-09



**E & E BORDERLINE SURVEYING**  
104 MULBERRY AVE.  
POMEROY, OHIO 45769  
(740) 992-7077  
FAX (740) 992-2708