

7

BRANNER SURVEYING
MEMBER-PROFESSIONAL LAND SURVEYORS OF OHIO
12500 PEACH RIDGE ROAD
ATHENS, OHIO 45701

JOHN M. BRANNER
Registered Land Surveyor

TELEPHONE
(614) 592-5778

DESCRIPTION OF A 6.02 ACRE TRACT

Situated in Section 7, T.10, R.14, Dover Township, Athens County, Ohio and being more particularly described as follows:

Beginning at an iron pin that bears South 86 Degrees 15 Minutes East, 818.00 feet from the North-east corner of Section 7; thence, South 86 Degrees 15 Minutes East, 15.89 feet to an iron pin; thence, along the lines of a 11.016 acre tract, South 02 Degrees 53 Minutes West, 628.70 feet to an iron pin; thence, North 76 Degrees 20 Minutes West, 405.13 feet to an iron pin; thence, South 27 Degrees 42 Minutes 30 Seconds West, 206.22 feet to a point in Township Road, 322, passing an iron pin at 137.4 feet; thence, along said road, North 24 Degrees 17 Minutes West, 53.67 feet to a point; thence, North 26 Degrees 55 Minutes 31 Seconds West, 117.27 feet to a point; thence, North 26 Degrees 54 Minutes 42 Seconds West, 164.70 feet to a point; thence, North 13 Degrees 14 Minutes 50 Seconds West, 36.47 feet to a point; thence leaving said road, North 60 Degrees 36 Minutes 30 Seconds East, 764.80 feet to the point of beginning and containing 6.02 acres.

Subject to all easements and rights of way of record.

John M. Branner
John M. Branner P.S. 6805

Description checked to:

Mathematical Accuracy

ATHENS COUNTY

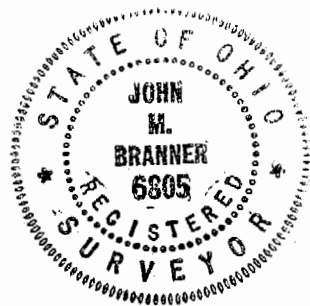
ENGINEER'S OFFICE

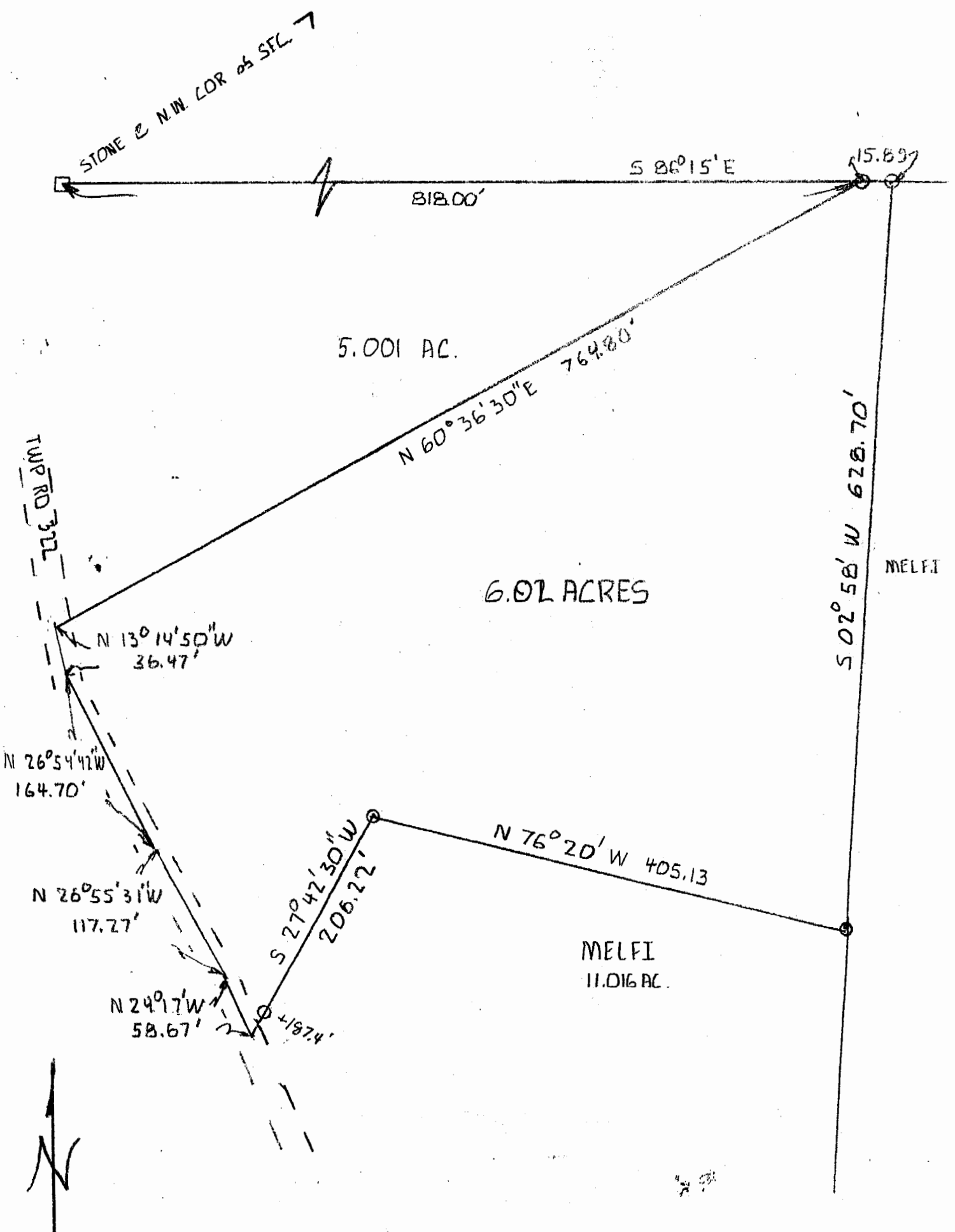
BY:

Chris Cotton

DATE:

5/22/89





6.02 ACRES

5.001 AC.

MELFI
11.016 AC.

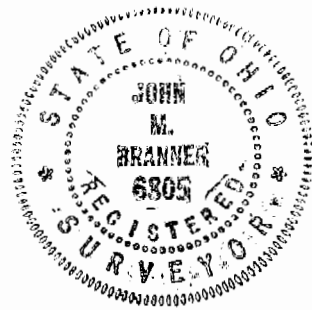
MELFI

SCALE: 1"=100'
O=IRON PIN

SURVEY OF A 6.02 ACRE TRACT
IN SEC. 7, T.10, R. 14, DOVER TWP,
ATHENS CO., OHIO

FOR PAUL BROWN
SURVEYED MAY 1989

John M. Branner
JOHN M. BRANNER P.S. 6805



Doc # 7
8