

Situated in Fraction 2, Section 9, T.10, R.14, Dover Township, Athens County, Ohio and being more particularly described as follows:

Commencing at a stone on the South-line of Section 9, and the East line of a 28.62 acre tract (Vol. 241, Page 610); thence, North, 1157.64 feet; thence, South 87 Degrees 46 Minutes 44 Seconds West, 543.53 feet to a point at the South-west corner of a 5.014 acre tract (Vol. 374, Page 501) and being in Dover Township Road 324; thence, along said road, North 82 Degrees 17 Minutes East 171.92 feet to the South-east corner of the aforementioned tract and being the point of beginning for the tract of land herein described:

Thence, leaving said road, North 1 degrees 18 minutes 00 seconds East a distance of 893.29 feet to an iron pin, passing an iron pin at 37.68 feet to the North-east corner of said tract; thence South 84 degrees 31 minutes 14 seconds West, a distance of 319.00 feet to an iron pin at the North-west corner of said tract;

thence North 71 degrees 56 minutes 53 seconds West, a distance of 300.00 feet to an iron pin at the North-east corner of a 5.04 acre tract (Vol. 68, Page 117);

thence South 69 degrees 27 minutes 36 seconds West, a distance of 148.03 feet to an point in Grantor's West-line;

thence, along said line, North 2 degrees 43 minutes 44 seconds West, a distance of 1028.98 feet to a fence corner;

thence North 83 degrees 47 minutes 27 seconds East, a distance of 1701.29 feet to an iron pin at the North-west corner of a 5.207 acre tract, Vol. 43, Page 595;

thence, South 3 degrees 47 minutes 50 seconds West, a distance of 669.48 feet to an iron pin at the North-east corner of a 1.76 acre tract (Vol. 11, Page 841);

thence, along said tract South 38 degrees 08 minutes 55 seconds West, a distance of 713.38 feet to an iron pin in ~~Township Road 324;~~

thence, ~~along said road,~~ South 73 degrees 06 minutes 56 seconds East, a distance of 196.62 feet; ~~TO AN IRON PIN IN TWP RD 324~~

thence South 18 degrees 36 minutes 31 seconds West, a distance of 269.74 feet;

thence South 21 degrees 02 minutes 15 seconds West, a distance of 138.18 feet;

thence South 10 degrees 41 minutes 41 seconds West, a distance of 50.00 feet;

thence South 9 degrees 25 minutes 41 seconds West, a distance of 150.00 feet;

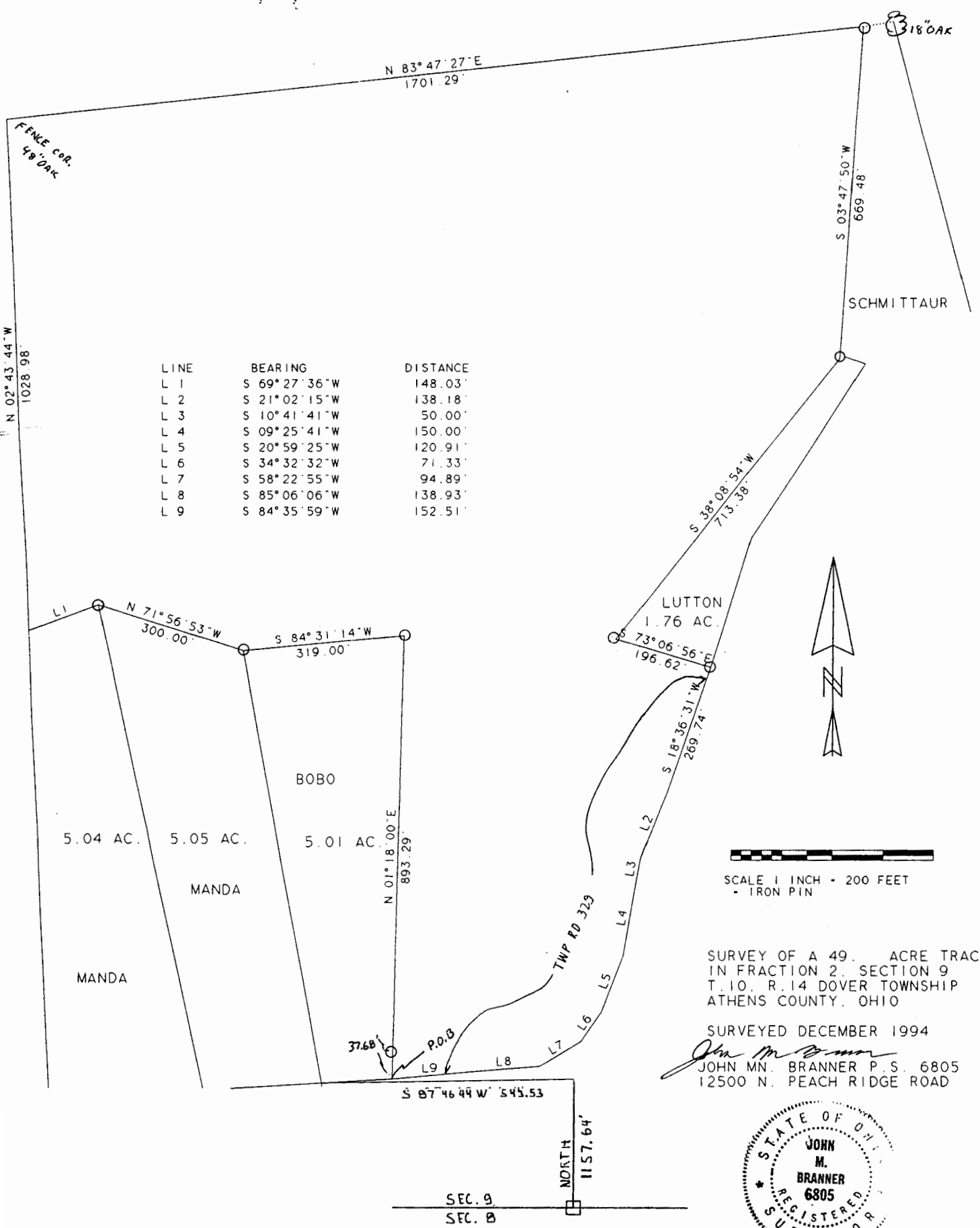
thence South 20 degrees 59 minutes 25 seconds West, a distance of 120.91 feet;

ALONG
SAID
ROAD

CONTINUED ON REVERSE

Dov #9

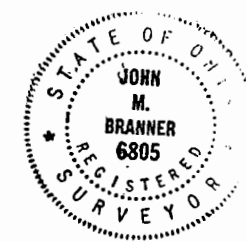
56

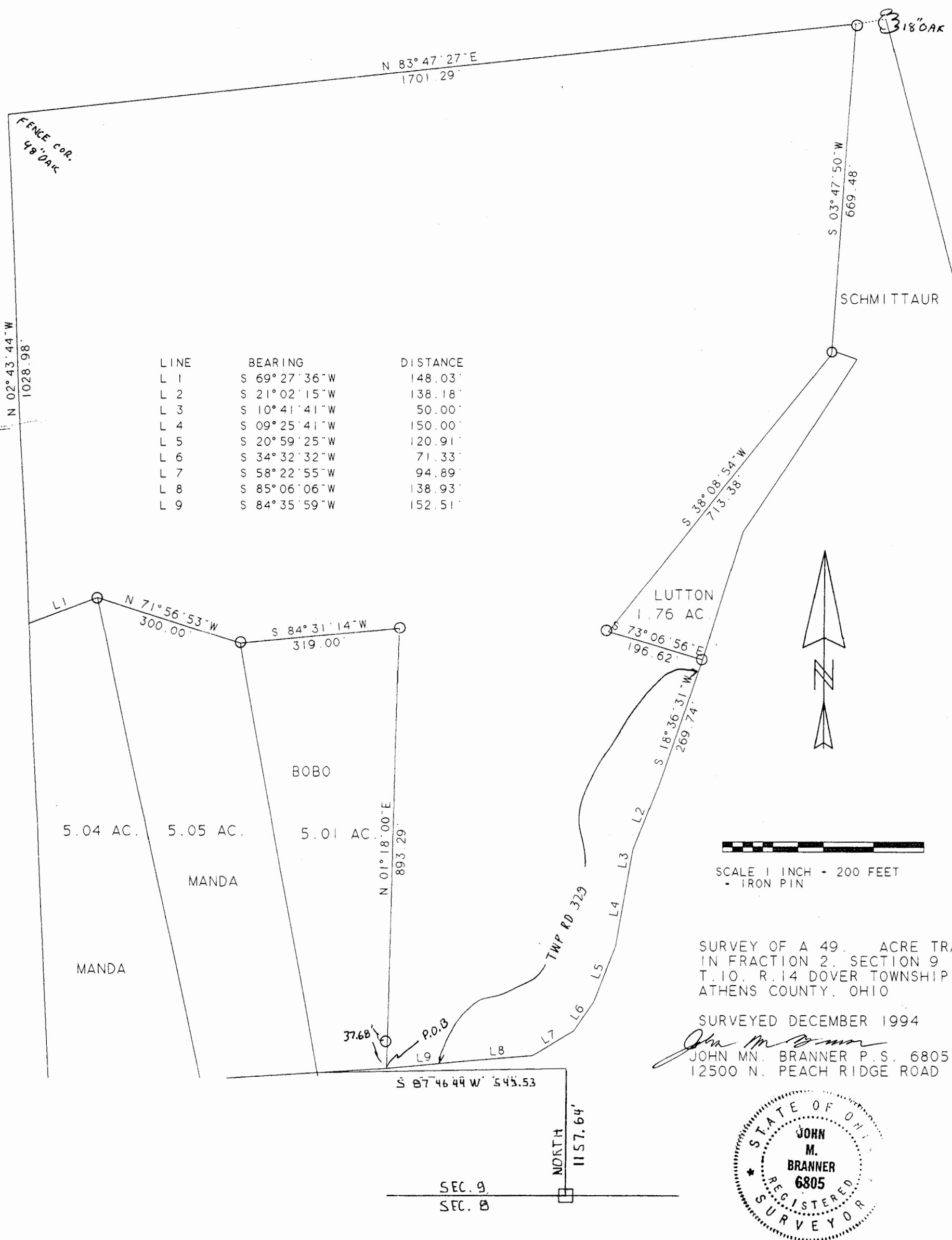


LINE	BEARING	DISTANCE
L 1	S 69° 27' 36" W	148.03'
L 2	S 21° 02' 15" W	138.18'
L 3	S 10° 41' 41" W	50.00'
L 4	S 09° 25' 41" W	150.00'
L 5	S 20° 59' 25" W	120.91'
L 6	S 34° 32' 32" W	71.33'
L 7	S 58° 22' 55" W	94.89'
L 8	S 85° 06' 06" W	138.93'
L 9	S 84° 35' 59" W	152.51'

SURVEY OF A 49. ACRE TRACT
 IN FRACTION 2, SECTION 9
 T. 10, R. 14 DOVER TOWNSHIP
 ATHENS COUNTY, OHIO

SURVEYED DECEMBER 1994
John M. Branner
 JOHN M. BRANNER P. S. 6805
 12500 N. PEACH RIDGE ROAD





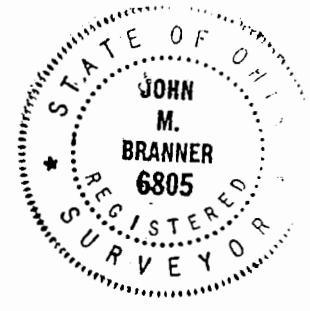
LINE	BEARING	DISTANCE
L 1	S 69° 27' 36" W	148.03'
L 2	S 21° 02' 15" W	138.18'
L 3	S 10° 41' 41" W	50.00'
L 4	S 09° 25' 41" W	150.00'
L 5	S 20° 59' 25" W	120.91'
L 6	S 34° 32' 32" W	71.33'
L 7	S 58° 22' 55" W	94.89'
L 8	S 85° 06' 06" W	138.93'
L 9	S 84° 35' 59" W	152.51'

SCALE 1 INCH = 200 FEET
- IRON PIN

SURVEY OF A 49.00 ACRE TRACT
IN FRACTION 2, SECTION 9
T. 10, R. 14 DOVER TOWNSHIP
ATHENS COUNTY, OHIO

SURVEYED DECEMBER 1994

John M. Branner
JOHN M. BRANNER P.S. 6805
12500 N. PEACH RIDGE ROAD



SEC. 9
SEC. 8