

DESCRIPTION OF A 0.84 ACRE TRACT

Situated in Section 13, T.10, R.14, Dover Township, Athens County, Ohio and being more particularly described as follows:

Beginning at a point in State Route 13, said point bears West 3950' +/- and South 850'+/- from the North-east corner of Section 18;

Thence, along State Route 13,

North 50 degrees 30 minutes 59 seconds West, 207.48 feet

North 48 degrees 14 minutes 17 seconds West, 93.27 feet

Thence, leaving said road and along new lines created by this survey:

North 43 degrees 43 minutes 04 seconds East, 141.64 feet to an iron pin set passing an iron pin set at 26.95 feet

South 58 degrees 07 minutes 02 seconds' East, 85.72 feet to an iron pin set;

South 28 degrees 59 minutes 44 seconds East, 204.87 feet to an iron pin set;

South 29 degrees 14 minutes 14 seconds west, 82.47 feet to the point of beginning and containing 0.84 acres more or less.

Subject to all easements and rights of way of record.

All iron pins set are 5/8" rebar by 30 inch long

The above description is based on a field survey completed April 2006 by John M.

Branner P.S. 6805



200600006506
Filed for Record in
ATHENS COUNTY, OHIO
JULIA MICHAEL SCOTT
09-26-2006 At 01:49 pm.
DEED 36.00
OR Book 402 Page 713 - 715

200600006506
JONESSEL LLC
6300 ERVIN RD APT 68
ATHENS, OH 45701

Description Checked for
Mathematical Accuracy
Athens County
ENGINEER'S OFFICE
BY: S. Blaus
DATE: 4-18-06

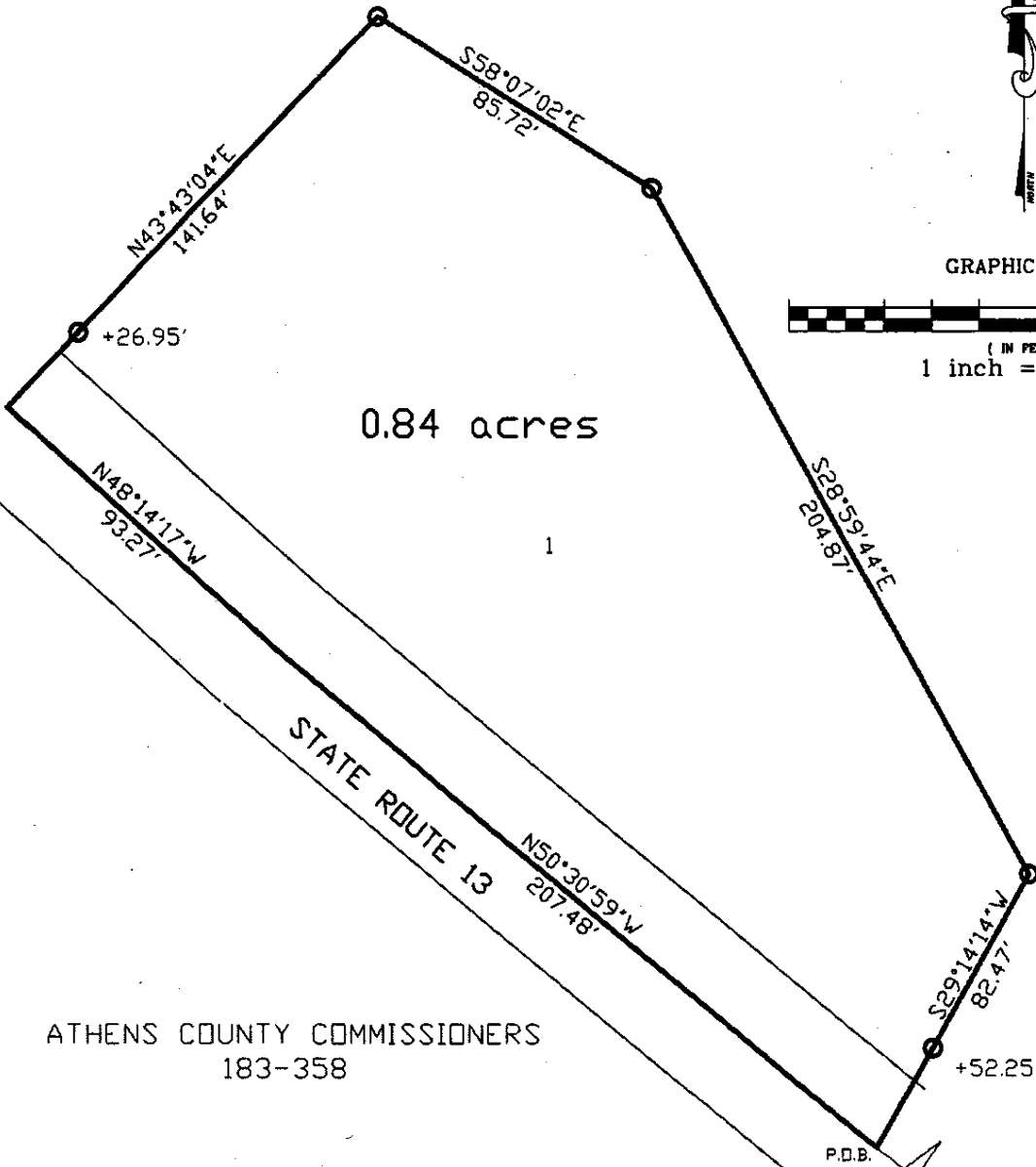
ATHENS COUNTY COMMISSIONERS
183-358



GRAPHIC SCALE



(IN FEET)
1 inch = 50 ft.



0.84 acres

1

STATE ROUTE 13

ATHENS COUNTY COMMISSIONERS
183-358

SURVEY OF A 0.84 ACRE TRACT IN SECTION
18, T10, R.14, DOVER TWP.
ATHENS COUNTY, OHIO

SHEETS
83-546

SURVEYED APRIL 2006

BY: *[Signature]*
ATHENS COUNTY ENGINEER DEPT.
JOHN M. BRANNER P.S. 6805

P.O.B. BEARS WEST 3950'+/-
SOUTH 850'+/- FROM N.E. COR.
OF SEC 13 (CALC)

Description Checked for
Mathematical Accuracy
Athens County
ENGINEER'S OFFICE

BY: *S. Blau*
DATE: 4-18-06