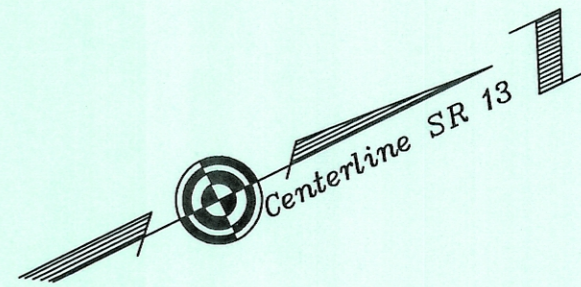


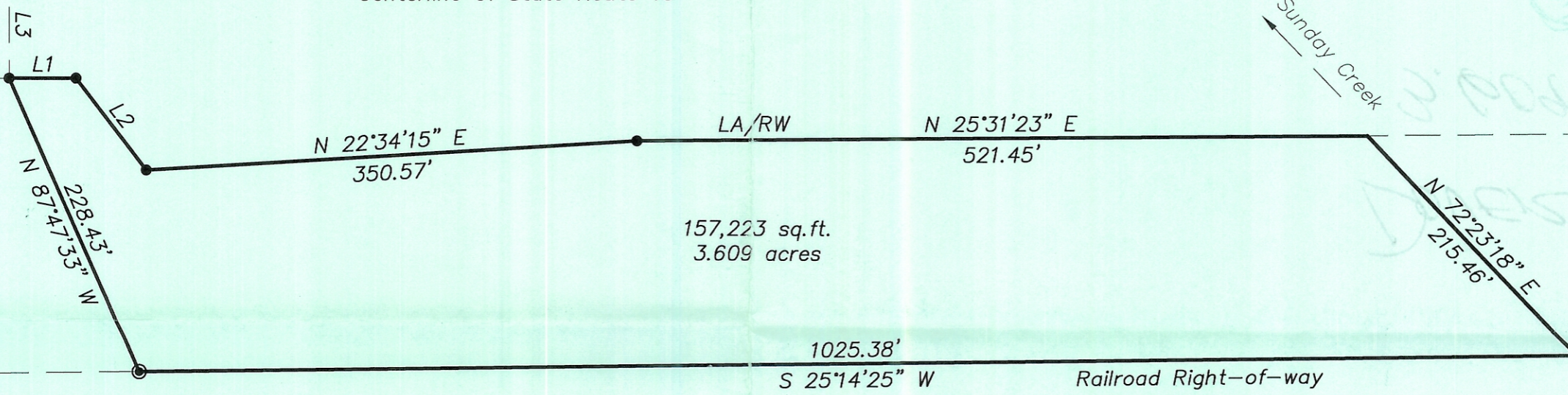
STA: 295+52.73
OFFSET: 0.00 L



294+00 295+00 296+00 297+00 298+00 299+00 300+00 301+00 302+00 303+00 304+00 305+00 306+00 307+00 308+00 309+00

Centerline of State Route 13

John & Deborah
Koons
186-27 OR



CONRAIL (100 feet)

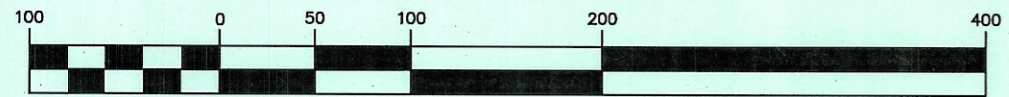
- △ = Railroad Spike Found
- ▲ = Railroad Spike Set
- ⊙ = Iron Pin Found
- = Iron Pin Set
- = Stone Found
- ⊕ = Monument Found

Plat of Survey of 3.609 Acres
Situated in Section 18, Town 10, Range 14,
Dover Township, Athens County, Ohio
Surveyed October 2000 for:
John Koons

Charles T. Newman
Charles T. Newman

LINE TABLE		
LINE	LENGTH	BEARING
L1	47.27	N25°50'29"E
L2	82.01	N78°16'22"E
L3	75.00	S64°09'31"E

GRAPHIC SCALE



(IN FEET)
1 inch = 100 ft.

Description checked for
Mathematical Accuracy
ATHENS COUNTY
ENGINEER'S OFFICE
BY: *S. Blausen*
DATE: 12-1-00

