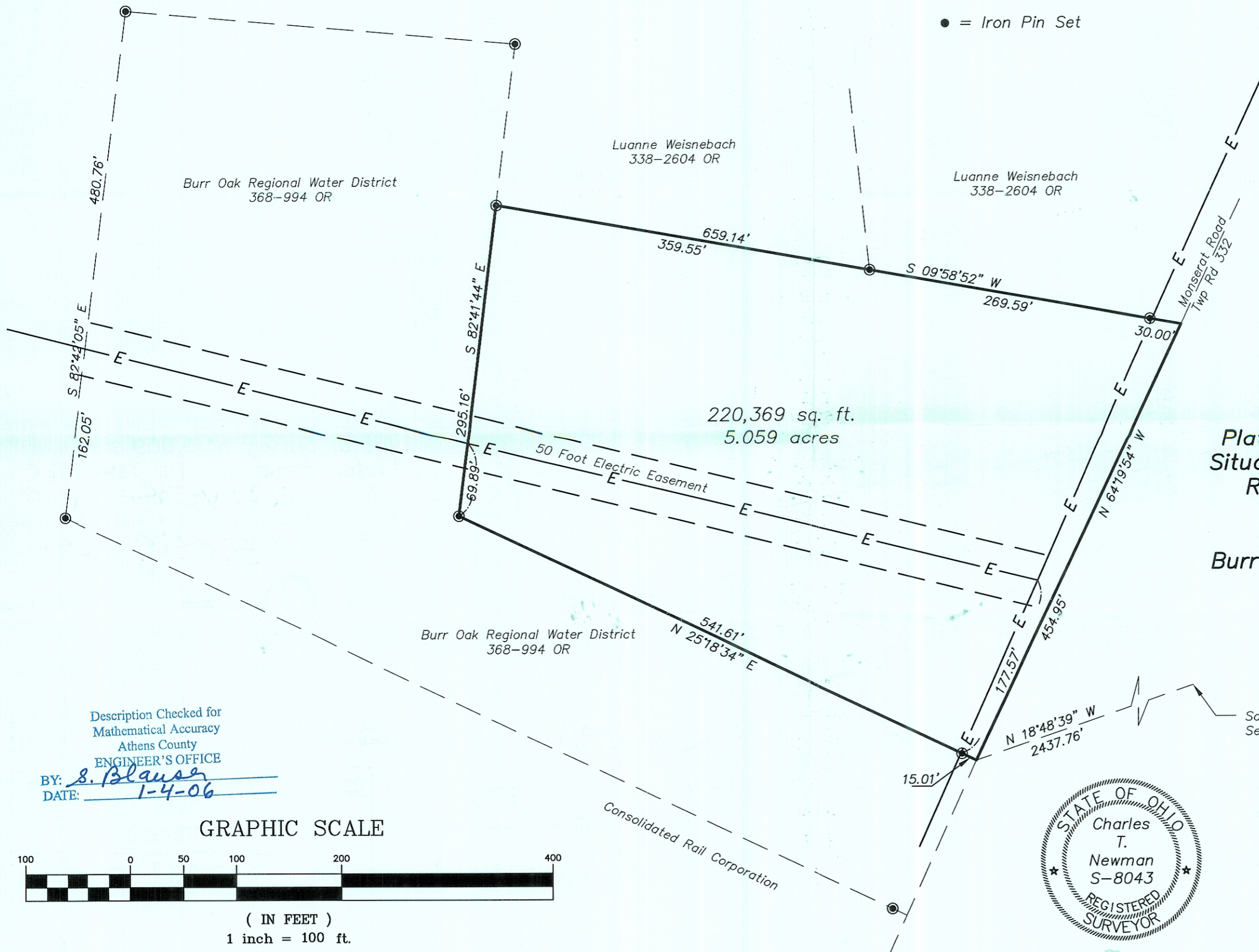




- ⊙ = Iron Pin Found
- = Iron Pin Set



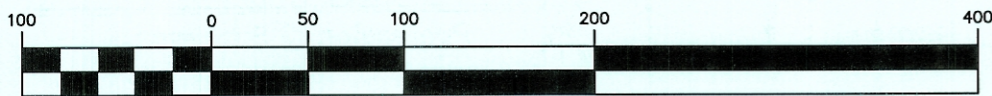
Plat of Survey of 5.059 Acres
 Situated in Section 18, Town 10,
 Range 14, Dover Township,
 Athens County, Ohio
 Surveyed Dec 2005 for:
 Burr Oak Regional Water District

Charles T. Newman
 Charles T. Newman

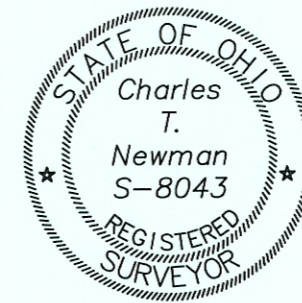
Southeast Corner
 Section 18

Description Checked for
 Mathematical Accuracy
 Athens County
 ENGINEER'S OFFICE
 BY: *S. Blause*
 DATE: *1-4-06*

GRAPHIC SCALE



(IN FEET)
 1 inch = 100 ft.



Member of Professional Land Surveyors of Ohio Land Surveys, Subdivisions



C. TIM NEWMAN
 Professional Surveyor

66 Elmwood Place
 Athens, Ohio 45701

740-594-1884
 FAX 740-594-9413