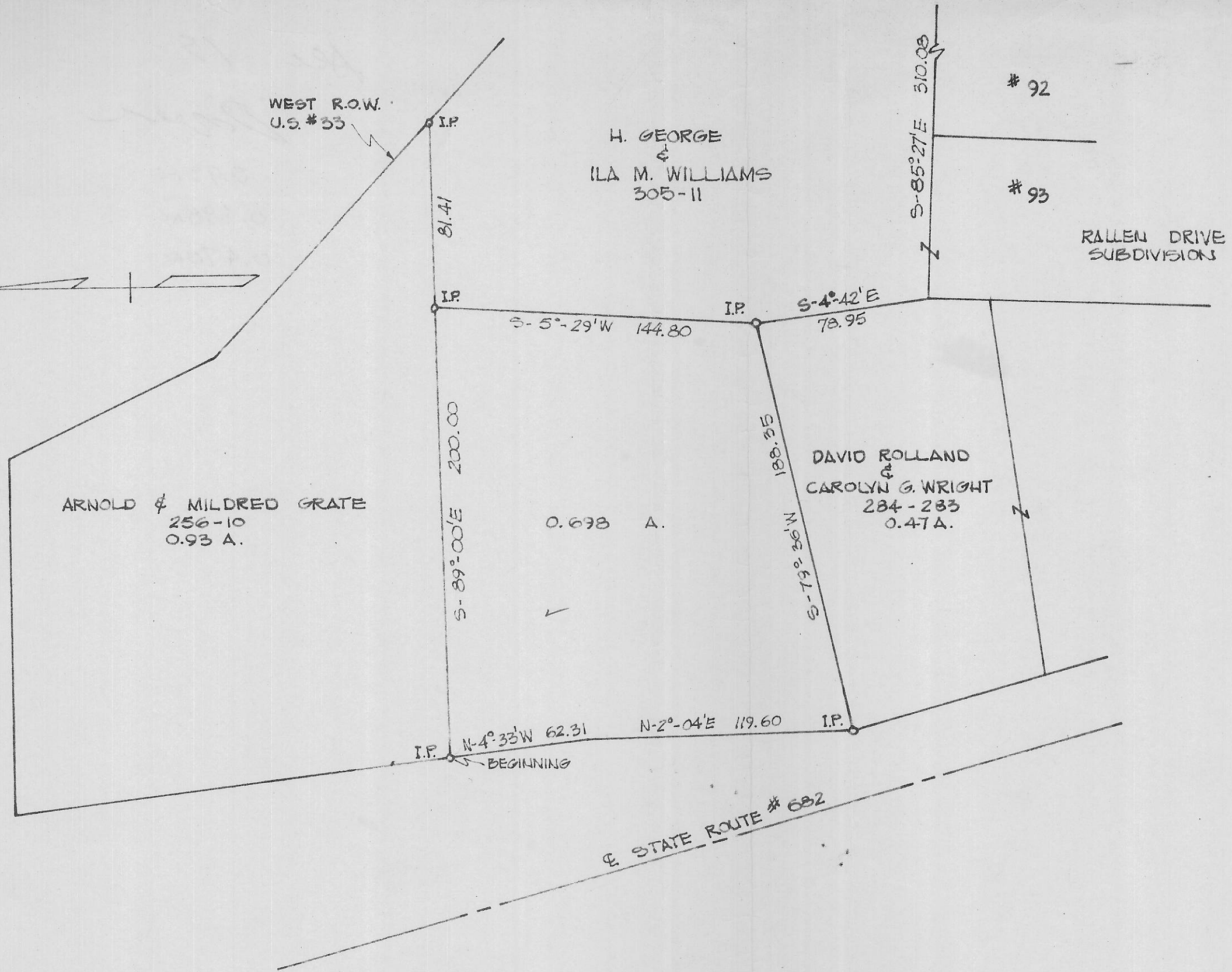
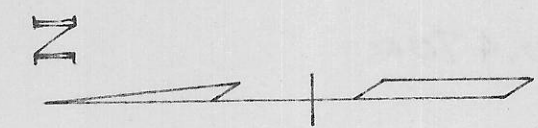


NW 1/4 of SW 1/4

STARTING AT S.W. CORNER OF SEC 19
NORTH 16°-55' EAST 199 FEET, SOUTH
87°-03' EAST 665.52 FEET, AND NORTH
5°-04' EAST 145.00 FEET TO POINT
OF BEGINNING



SURVEY OF 0.698 ACRE SITUATED IN SEC 19
TOWN 10 RANGE 14 DOVER TWP ATHENS CO. OHIO
FOR H. GEORGE & ILA M. WILLIAMS
SOLD TO

SURVEYED BY P.A. DIXON REG. ENGR 9786
JUNE 9, 1972 REG. SURV. 3060

SCALE 1" = 50'