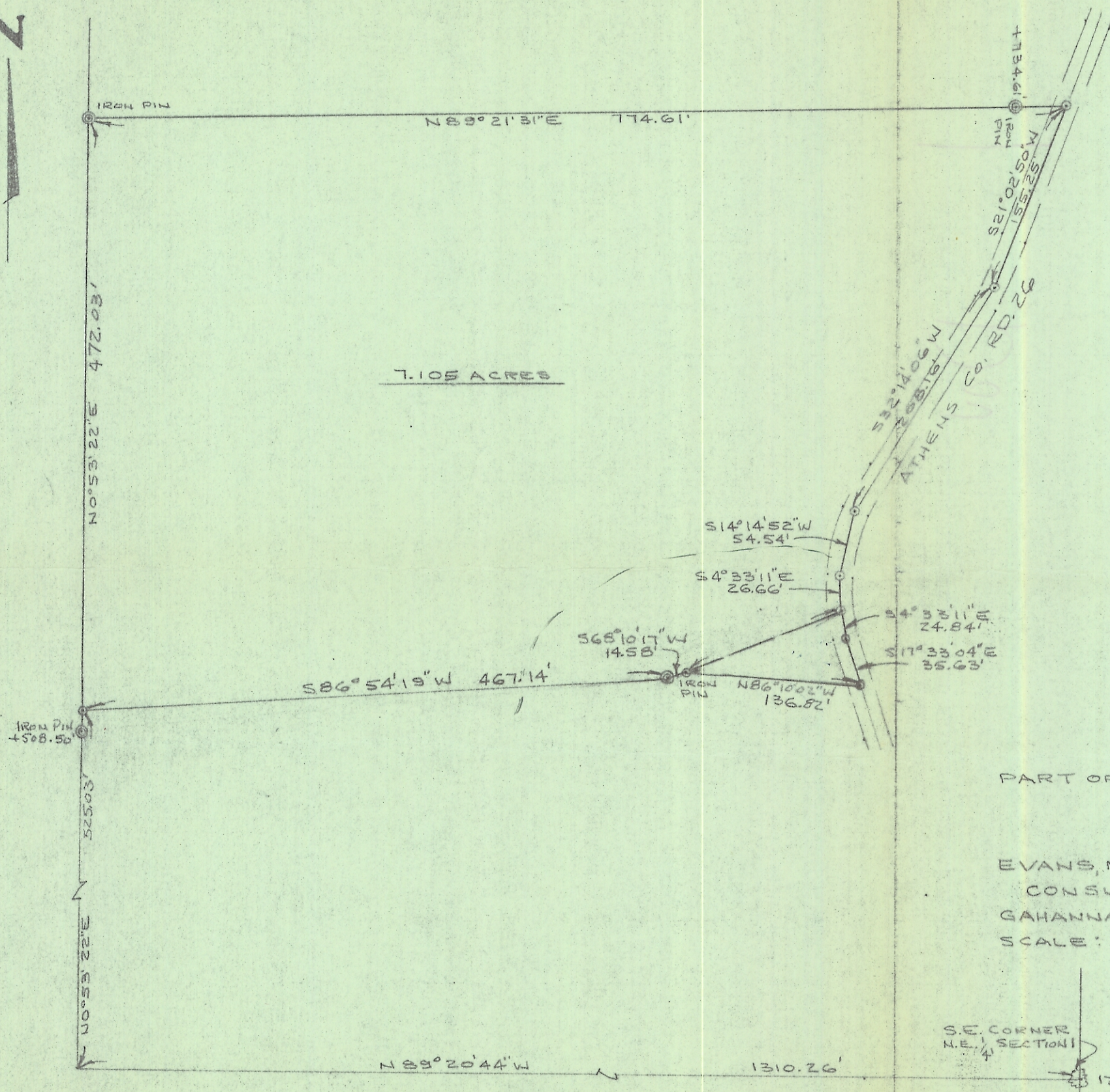


N



7.105 ACRES

PLAT OF SURVEY  
7.105 ACRES

PART OF N.E.  $\frac{1}{4}$  SECTION 1, TOWN 10, RANGE 14, DOVER TWP.  
ATHENS CO, OHIO

PREPARED BY  
EVANS, MECHWART, HAMBLETON & TILTON, INC.  
CONSULTING ENGINEERS & SURVEYORS  
GAHANNA, OHIO  
SCALE: 1" = 100'  
ATHENS, OHIO  
NOVEMBER, 1976

*William M. Watkins*  
REGISTERED SURVEYOR #5216

S.E. CORNER  
N.E.  $\frac{1}{4}$  SECTION 1  
12" WALNUT TREE